

# PINE GULCH CO-GRD-000307

## Mesa Parcels 8/27/20

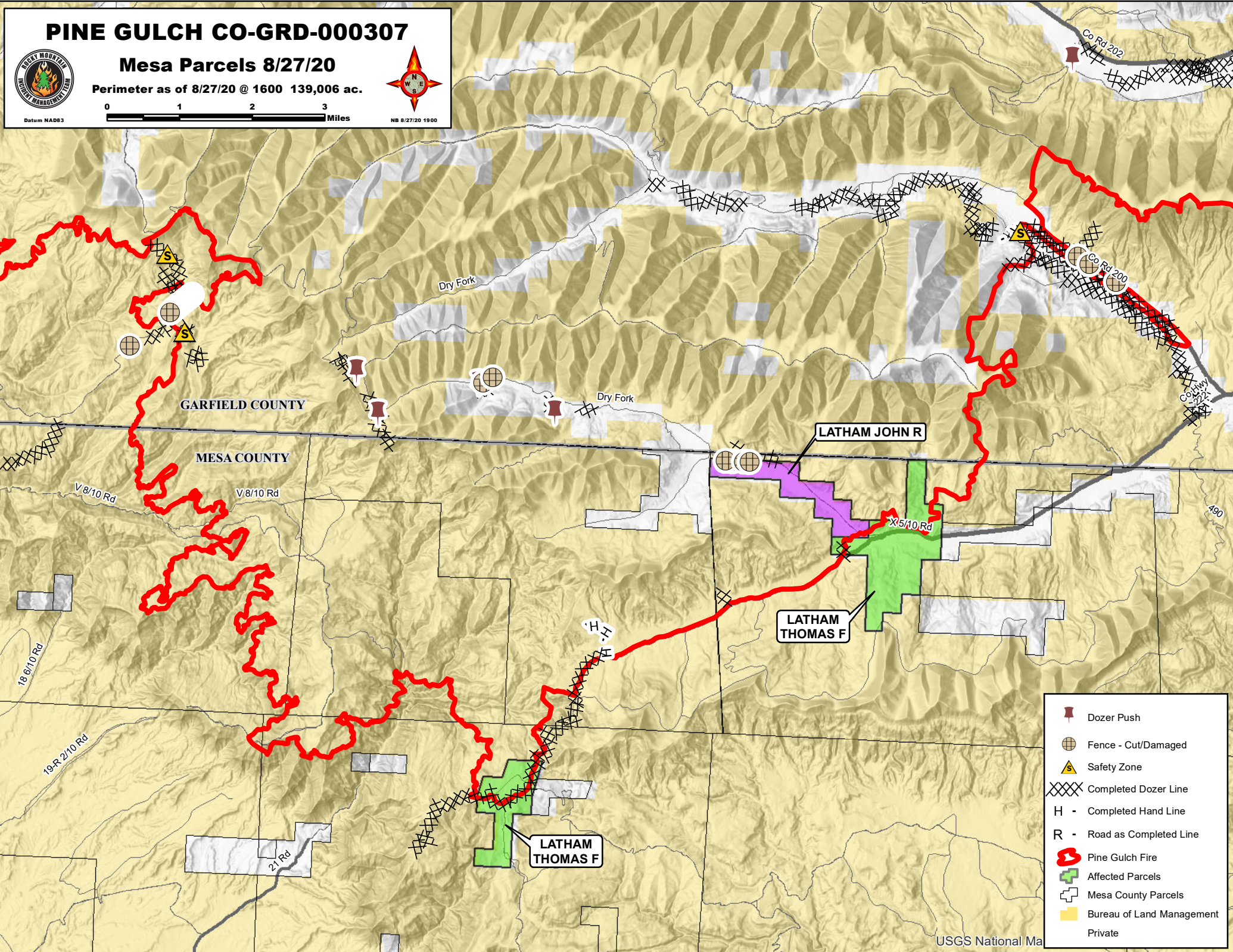
Perimeter as of 8/27/20 @ 1600 139,006 ac.



Datum NAD83



N8 8/27/20 1900



- Dozer Push
- Fence - Cut/Damaged
- Safety Zone
- Completed Dozer Line
- Completed Hand Line
- Road as Completed Line
- Pine Gulch Fire
- Affected Parcels
- Mesa County Parcels
- Bureau of Land Management
- Private

USGS National Ma