

Operations

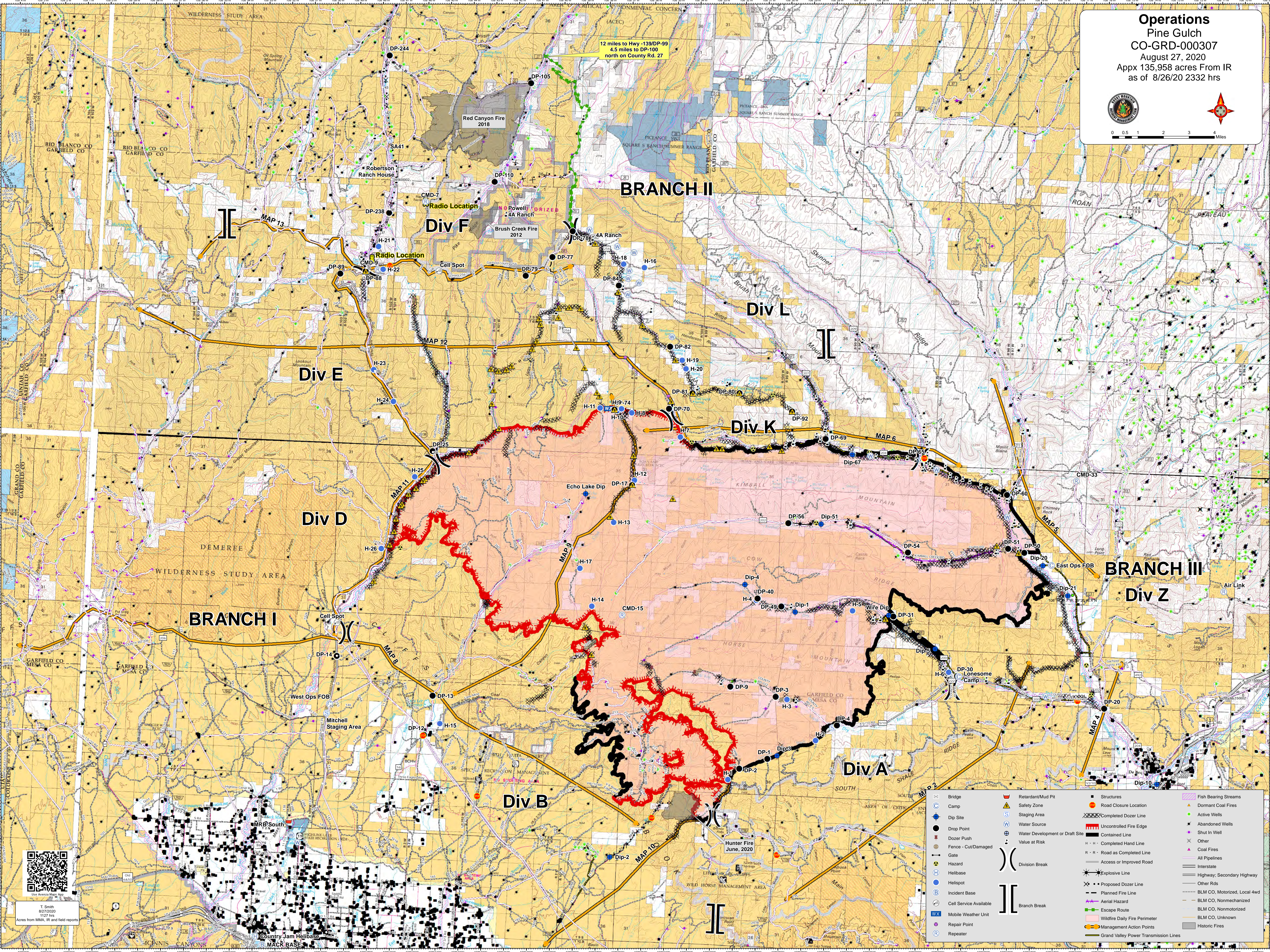
Pine Gulch

CO-GRD-000307

August 27, 2020

Appx 135,958 acres From IR

as of 8/26/20 2332 hrs



12 miles to Hwy -139/DP-99
4.5 miles to DP-100
north on County Rd. 27

Div F

BRANCH II

Div L

Div K

Div E

Div D

BRANCH I

Div B

Div A

BRANCH III

Div Z



T. Smith
82770200
1127 hrs
Acres from MMA, IR and field reports

	Bridge		Retardant/Mud Pit		Structures		Fish Bearing Streams
	Camp		Safety Zone		Road Closure Location		Dormant Coal Fires
	Dip Site		Staging Area		Completed Dozer Line		Active Wells
	Drop Point		Water Source		Uncontrolled Fire Edge		Abandoned Wells
	Dozer Push		Water Development or Draft Site		Contained Line		Shut In Well
	Fence - Cut/Damaged		Value at Risk		Completed Hand Line		Other
	Gate		Division Break		Access or Improved Road		Coal Fires
	Hazard		Explosive Line		Proposed Dozer Line		All Pipelines
	Helibase		Aerial Fire Line		Planned Fire Line		Interstate
	Helispot		Escape Route		Wildfire Daily Fire Perimeter		Highway, Secondary Highway
	Incident Base		Management Action Points		Management Action Points		Other Rds
	Cell Service Available		Grand Valley Power Transmission Lines		Grand Valley Power Transmission Lines		BLM CO, Motorized, Local 4wd
	Repair Point						BLM CO, Nonmechanized
	Repeater						BLM CO, Unknown
							Historic Fires