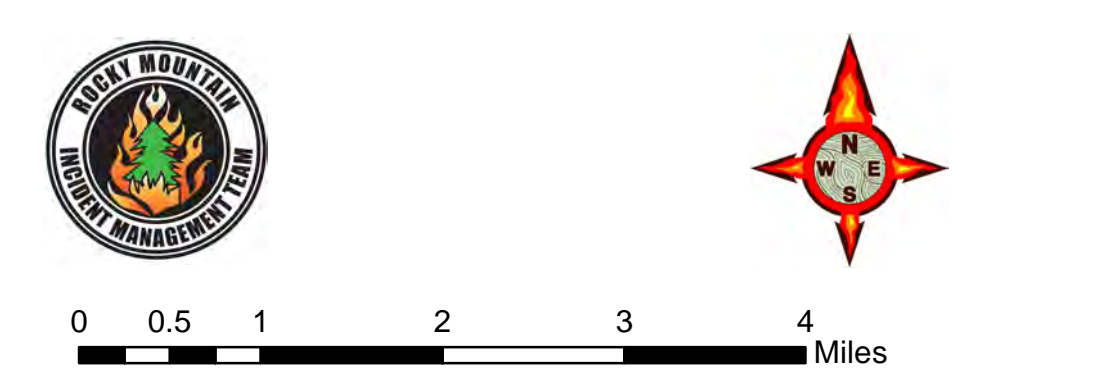


# Operations

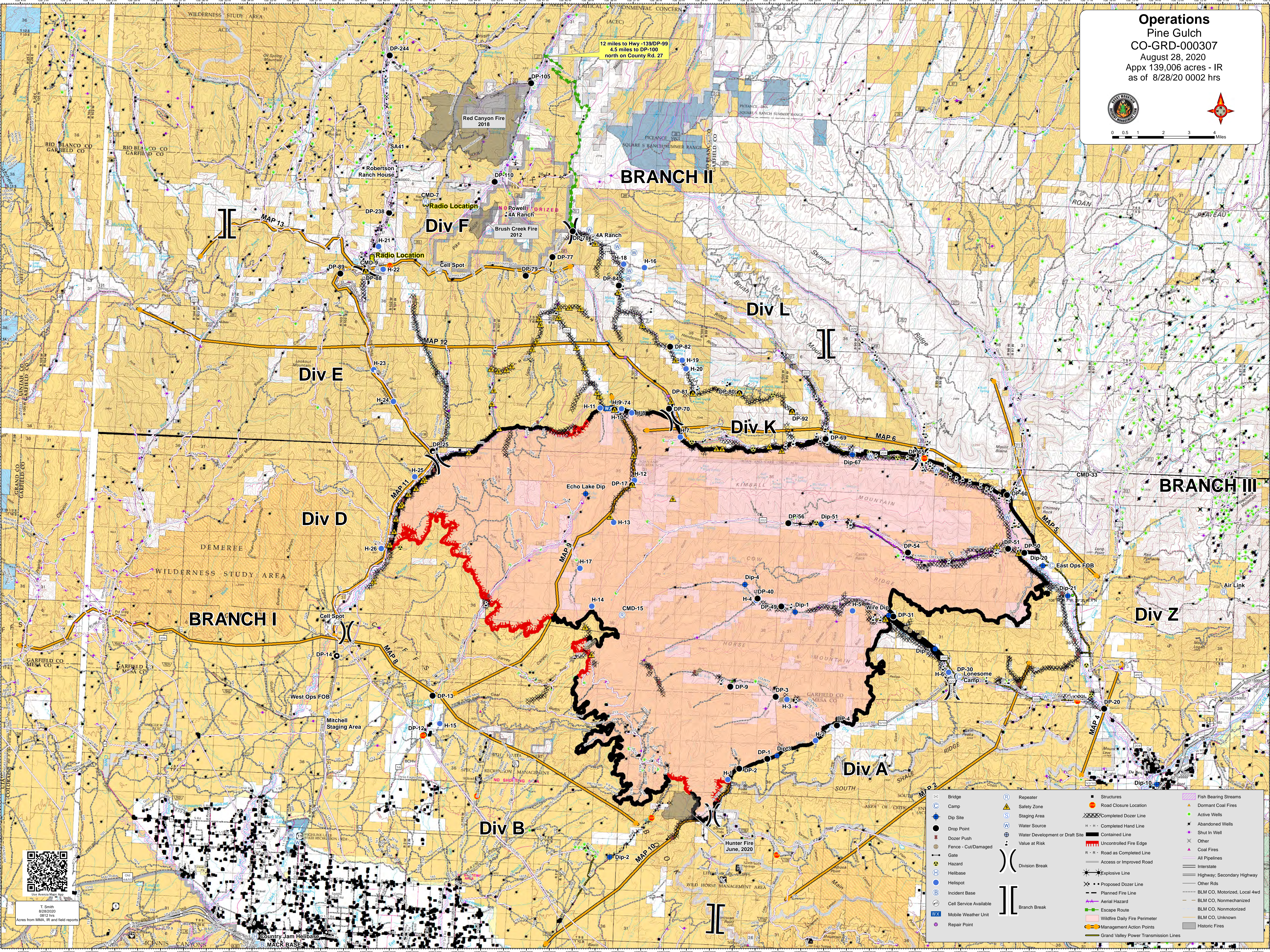
Pine Gulch  
CO-GRD-000307

August 28, 2020

Appx 139,006 acres - IR  
as of 8/28/20 0002 hrs



12 miles to Hwy -139/DP-99  
4.5 miles to DP-100  
north on County Rd. 27



T. Smith  
8/28/2020  
0812 hrs  
Acres from MMA, IR and field reports

	Bridge		Repeater		Structures		Fish Bearing Streams
	Camp		Safety Zone		Completed Dozer Line		Dormant Coal Fires
	Dip Site		Staging Area		Active Wells		Abandoned Wells
	Drop Point		Water Source		Completed Hand Line		Shut In Well
	Dozer Push		Water Development or Draft Site		Contained Line		Other
	Fence - Cut/Damaged		Value at Risk		Uncontrolled Fire Edge		Coal Fires
	Gate		Division Break		Access or Improved Road		All Pipelines
	Hazard		Explosive Line		Explosive Line		Highway, Secondary Highway
	Helibase		Proposed Dozer Line		Other Rds		BLM CO, Motorized, Local 4wd
	Helispot		Planned Fire Line		BLM CO, Nonmechanized		BLM CO, Nonmotorized
	Incident Base		Aerial Hazard		BLM CO, Unknown		Historic Fires
	Cell Service Available		Escape Route		Wildfire Daily Fire Perimeter		
	Mobile Weather Unit		Management Action Points		Grand Valley Power Transmission Lines		
	Repair Point						