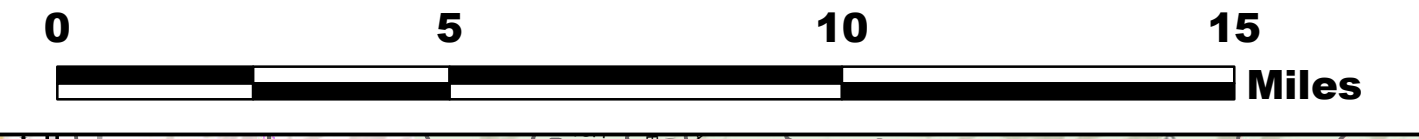
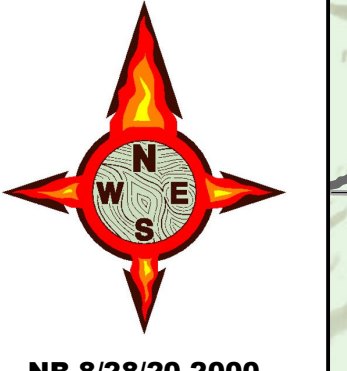


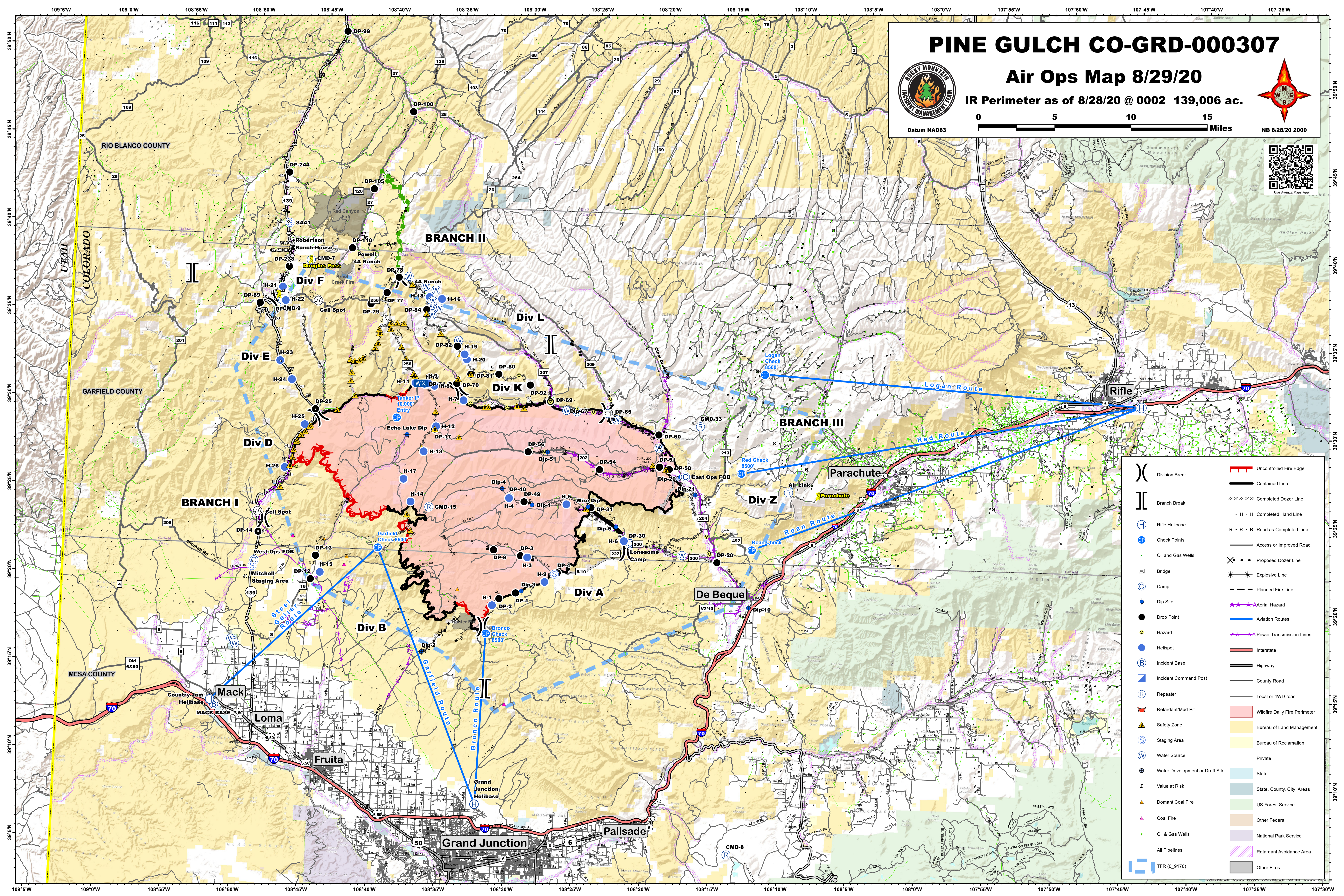
PINE GULCH CO-GRD-000307

Air Ops Map 8/29/20

IR Perimeter as of 8/28/20 @ 0002 139,006 ac.



Datum NAD83



()	Division Break	—	Uncontrolled Fire Edge
	Branch Break	—	Contained Line
(H)	Rifle Helibase	— x x x x	Completed Dozer Line
(C)	Check Points	H · H · H	Completed Hand Line
(S)	Oil and Gas Wells	R · R · R	Road as Completed Line
(B)	Bridge	—	Access or Improved Road
(C)	Camp	— x —	Proposed Dozer Line
(D)	Dip Site	— *	Explosive Line
(H)	Hazard	— - -	Planned Fire Line
(B)	Helispot	— ▲	Aerial Hazard
(B)	Incident Base	— ▲	Power Transmission Lines
(C)	Incident Command Post	—	Aviation Routes
(R)	Repeater	—	Interstate
(M)	Retardant/Mud Pit	—	Highway
(S)	Safety Zone	—	County Road
(S)	Staging Area	—	Local or 4WD road
(W)	Water Source	—	Wildfire Daily Fire Perimeter
(D)	Water Development or Draft Site	—	Bureau of Land Management
(V)	Value at Risk	—	Bureau of Reclamation
(D)	Dominant Coal Fire	—	Private
(C)	Coal Fire	—	State
(G)	Oil & Gas Wells	—	State, County, City, Areas
(P)	All Pipelines	—	US Forest Service
(T)	TFR (0_9170)	—	Other Federal
		—	National Park Service
		—	Retardant Avoidance Area
		—	Other Fires