

# PINE GULCH CO-GRD-000307

## Air Ops Map 8/29/20

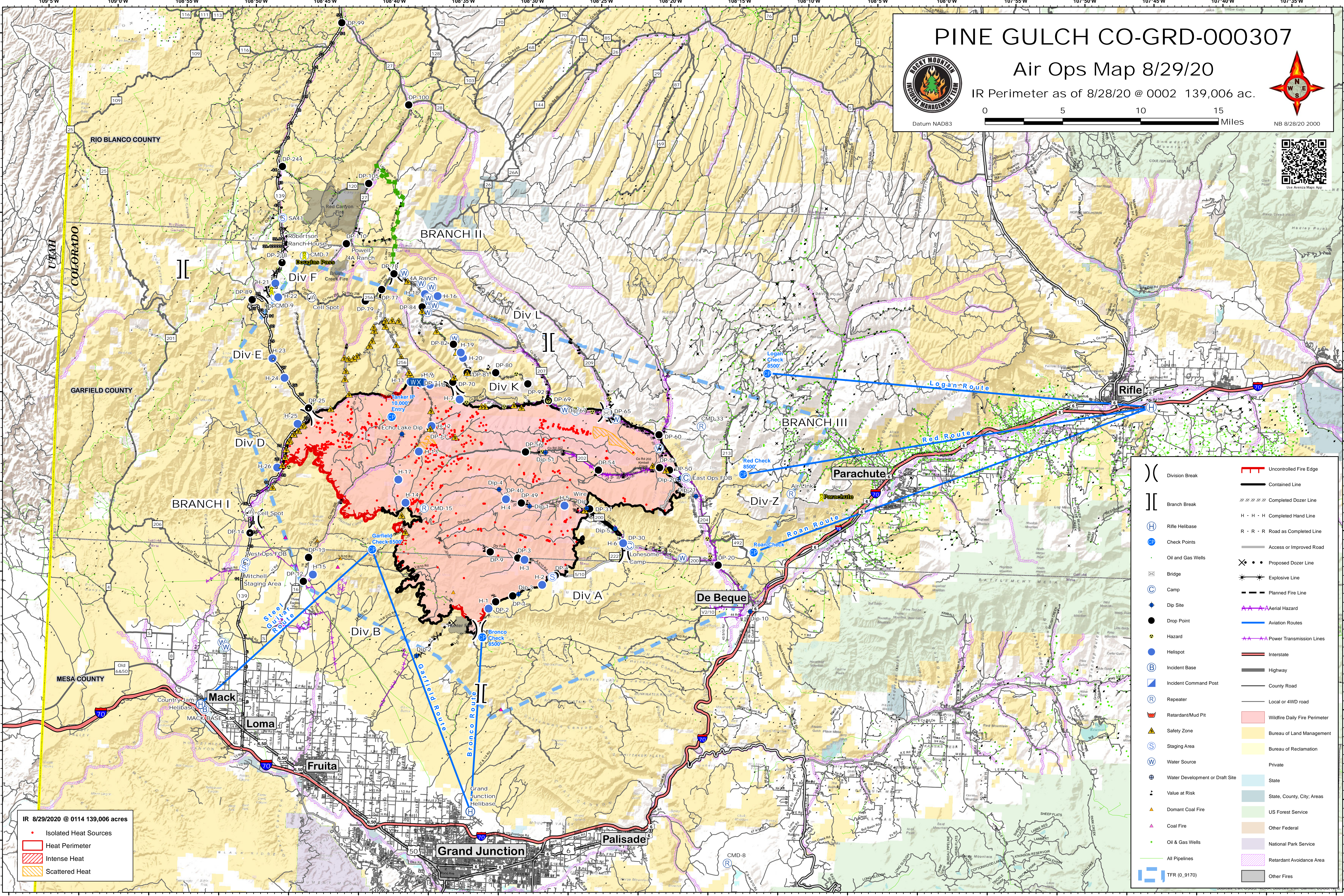


IR Perimeter as of 8/28/20 @ 0002 139,006 ac.



0 5 10 15 Miles

Datum NAD83



IR 8/29/2020 @ 0114 139,006 acres

- Isolated Heat Sources
- Heat Perimeter
- Intense Heat
- Scattered Heat

( )	Division Break	—	Uncontrolled Fire Edge
	Branch Break	—	Contained Line
(H)	Rifle Helibase	—	Completed Dozer Line
(C)	Check Points	H · H · H	Completed Hand Line
(S)	Oil and Gas Wells	R · R · R	Road as Completed Line
(B)	Bridge	—	Access or Improved Road
(C)	Camp	X · · ·	Proposed Dozer Line
(D)	Dip Site	*	Explosive Line
(H)	Drop Point	—	Planned Fire Line
(S)	Hazard	—	Aerial Hazard
(H)	Helispot	—	Power Transmission Lines
(B)	Incident Base	—	Interstate
(C)	Incident Command Post	—	Highway
(R)	Repeater	—	County Road
(M)	Retardant/Mud Pit	—	Local or 4WD road
(S)	Safety Zone	—	Wildfire Daily Fire Perimeter
(S)	Staging Area	—	Bureau of Land Management
(W)	Water Source	—	Bureau of Reclamation
(D)	Water Development or Draft Site	—	Private
(V)	Value at Risk	—	State
(C)	Domant Coal Fire	—	State, County, City, Areas
(C)	Coal Fire	—	US Forest Service
(G)	Oil & Gas Wells	—	Other Federal
(P)	All Pipelines	—	National Park Service
(T)	TFR (0.9170)	—	Retardant Avoidance Area
		—	Other Fires