

# Operations

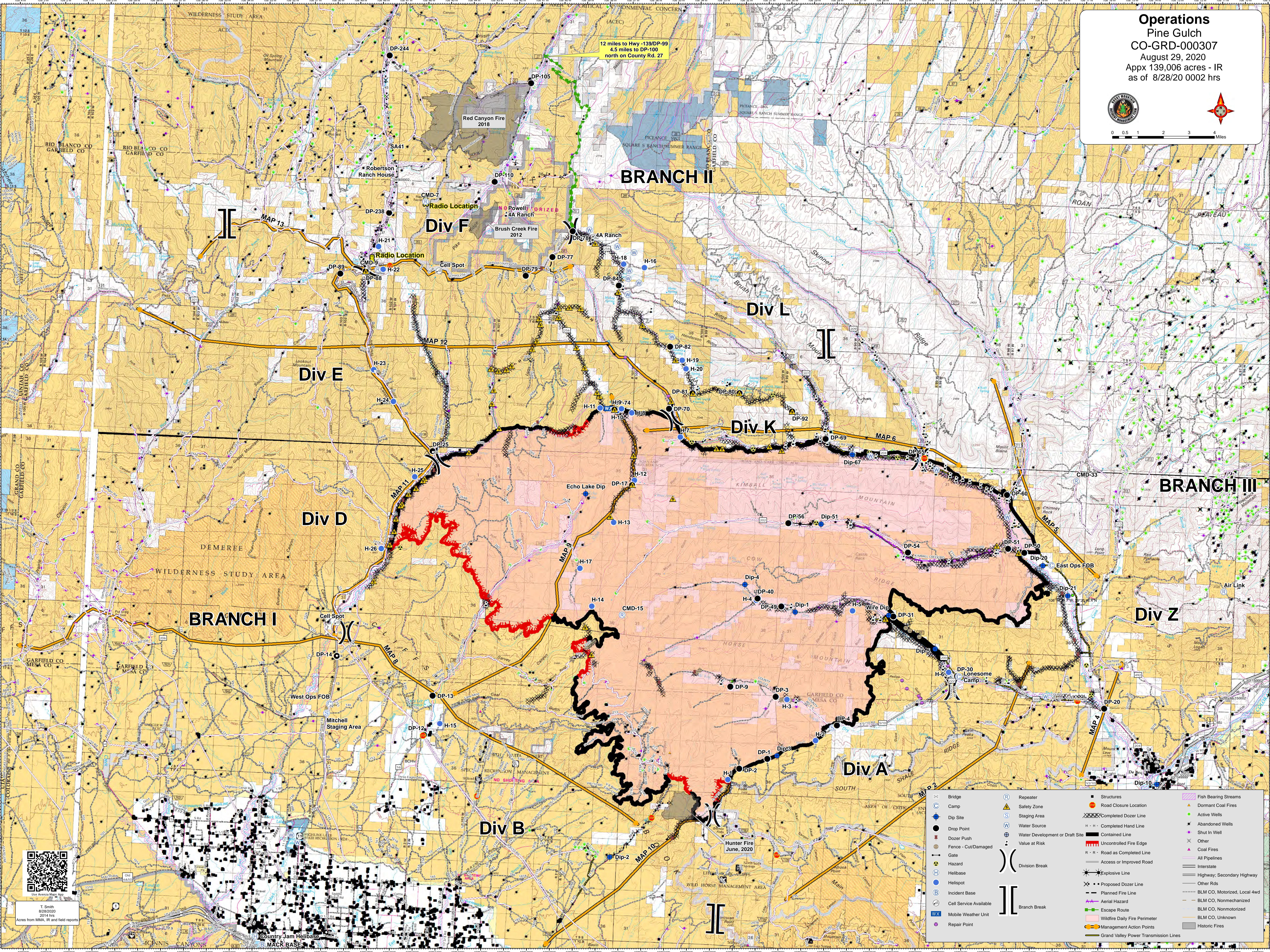
## Pine Gulch

### CO-GRD-000307

August 29, 2020

Appx 139,006 acres - IR

as of 8/28/20 0002 hrs



12 miles to Hwy -139/DP-99  
4.5 miles to DP-100  
north on County Rd. 27

Div F

BRANCH II

Div L

Div K

Div E

Div D

BRANCH I

Div Z

BRANCH III

Div B

Div A



T. Smith  
8/28/2020  
2014 hrs

Acres from MMA, IR and field reports

	Bridge		Repeater		Structures		Fish Bearing Streams
	Camp		Safety Zone		Completed Dozer Line		Dormant Coal Fires
	Dip Site		Staging Area		Active Wells		Abandoned Wells
	Drop Point		Water Source		Shut In Well		Other
	Dozer Push		Water Development or Draft Site		Coal Fires		All Pipelines
	Fence - Cut/Damaged		Value at Risk		Road as Completed Line		Interstate
	Gate		Division Break		Access or Improved Road		Highway, Secondary Highway
	Hazard		Explosive Line		Proposed Dozer Line		Other Rds
	Helibase		Aerial Fire Line		Planned Fire Line		BLM CO, Motorized, Local 4wd
	Helispot		Aerial Hazard		BLM CO, Nonmechanized		BLM CO, Nonmotorized
	Incident Base		Escape Route		Wildfire Daily Fire Perimeter		BLM CO, Unknown
	Cell Service Available		Management Action Points		Grand Valley Power Transmission Lines		Historic Fires
	Repair Point		Branch Break				