

Operations

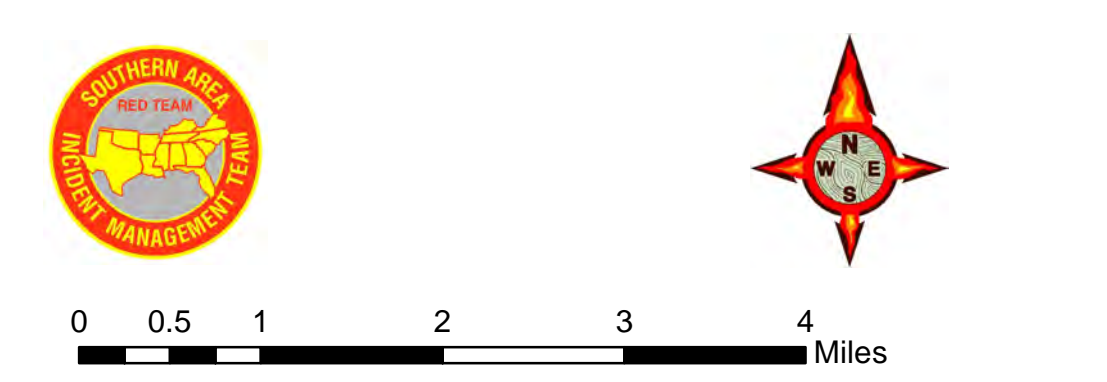
Pine Gulch

CO-GRD-000307

August 30, 2020

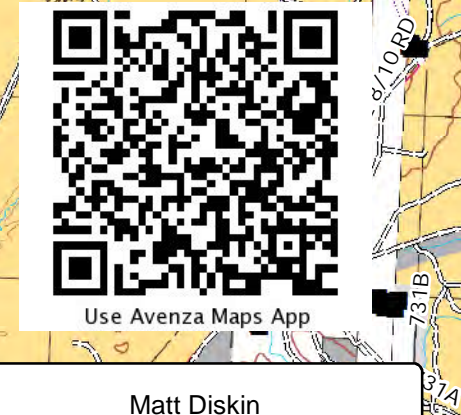
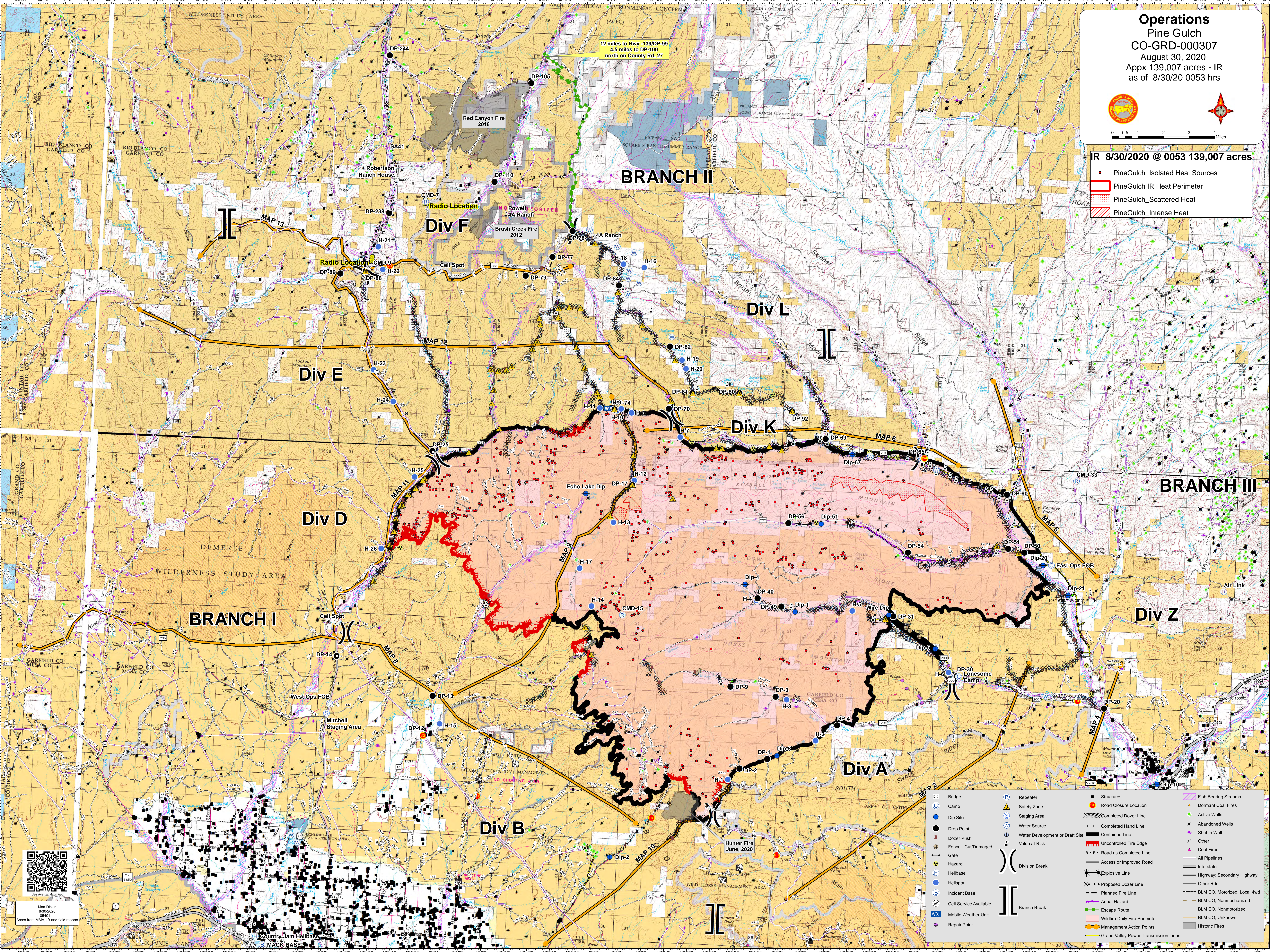
Appx 139,007 acres - IR

as of 8/30/20 0053 hrs



IR 8/30/2020 @ 0053 139,007 acres

- PineGulch_Isolated Heat Sources
- PineGulch IR Heat Perimeter
- PineGulch_Scattered Heat
- PineGulch Intense Heat



Acres from MMA, IR and field reports

- | | | | | | | | |
|--|------------------------|--|---------------------------------------|--|--------------------------|--|------------------------------|
| | Bridge | | Repeater | | Structures | | Fish Bearing Streams |
| | Camp | | Safety Zone | | Road Closure Location | | Dormant Coal Fires |
| | Dip Site | | Staging Area | | Completed Dozer Line | | Active Wells |
| | Drop Point | | Water Source | | Completed Hand Line | | Abandoned Wells |
| | Dozer Push | | Water Development or Draft Site | | Contained Line | | Shut In Well |
| | Fence - Cut/Damaged | | Value at Risk | | Uncontrolled Fire Edge | | Other |
| | Gate | | Road as Completed Line | | All Pipelines | | Coal Fires |
| | Hazard | | Access or Improved Road | | Explosive Line | | Other Rds |
| | Helibase | | Proposed Dozer Line | | Planned Fire Line | | BLM CO, Motorized, Local 4wd |
| | Helispot | | Aerial Hazard | | Escape Route | | BLM CO, Nonmechanized |
| | Incident Base | | Wildfire Daily Fire Perimeter | | Management Action Points | | BLM CO, Unknown |
| | Cell Service Available | | Grand Valley Power Transmission Lines | | | | Historic Fires |
| | Mobile Weather Unit | | | | | | |
| | Repair Point | | | | | | |