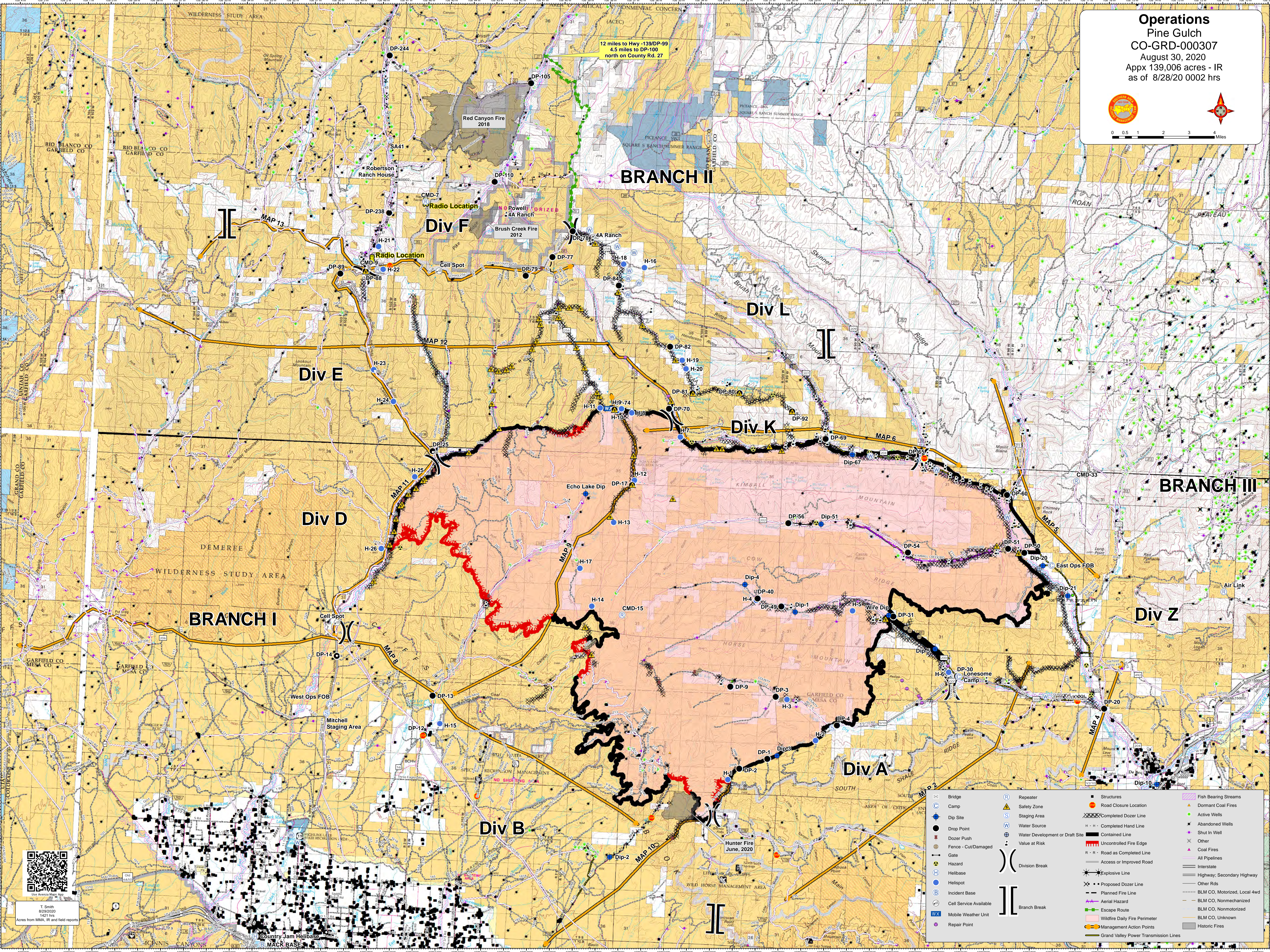


12 miles to Hwy -139/DP-99
 4.5 miles to DP-100
 north on County Rd. 27



T. Smith
 8/28/2020
 1421 hrs
 Acres from MMA, IR and field reports

	Bridge		Repeater		Structures		Fish Bearing Streams
	Camp		Safety Zone		Completed Dozer Line		Dormant Coal Fires
	Dip Site		Staging Area		Active Wells		Abandoned Wells
	Drop Point		Water Source		Completed Hand Line		Shut In Well
	Dozer Push		Water Development or Draft Site		Contained Line		Other
	Fence - Cut/Damaged		Value at Risk		Uncontrolled Fire Edge		Coal Fires
	Gate		Access or Improved Road		Explosive Line		All Pipelines
	Hazard		Explosive Line		Proposed Dozer Line		Interstate
	Helibase		Proposed Dozer Line		Planned Fire Line		Highway, Secondary Highway
	Helispot		Planned Fire Line		Aerial Hazard		Other Rds
	Incident Base		Aerial Hazard		Escape Route		BLM CO, Motorized, Local 4wd
	Cell Service Available		Escape Route		Wildfire Daily Fire Perimeter		BLM CO, Nonmechanized
	Mobile Weather Unit		Wildfire Daily Fire Perimeter		Management Action Points		BLM CO, Nonmotorized
	Repair Point		Management Action Points		Grand Valley Power Transmission Lines		BLM CO, Unknown
			Grand Valley Power Transmission Lines				Historic Fires