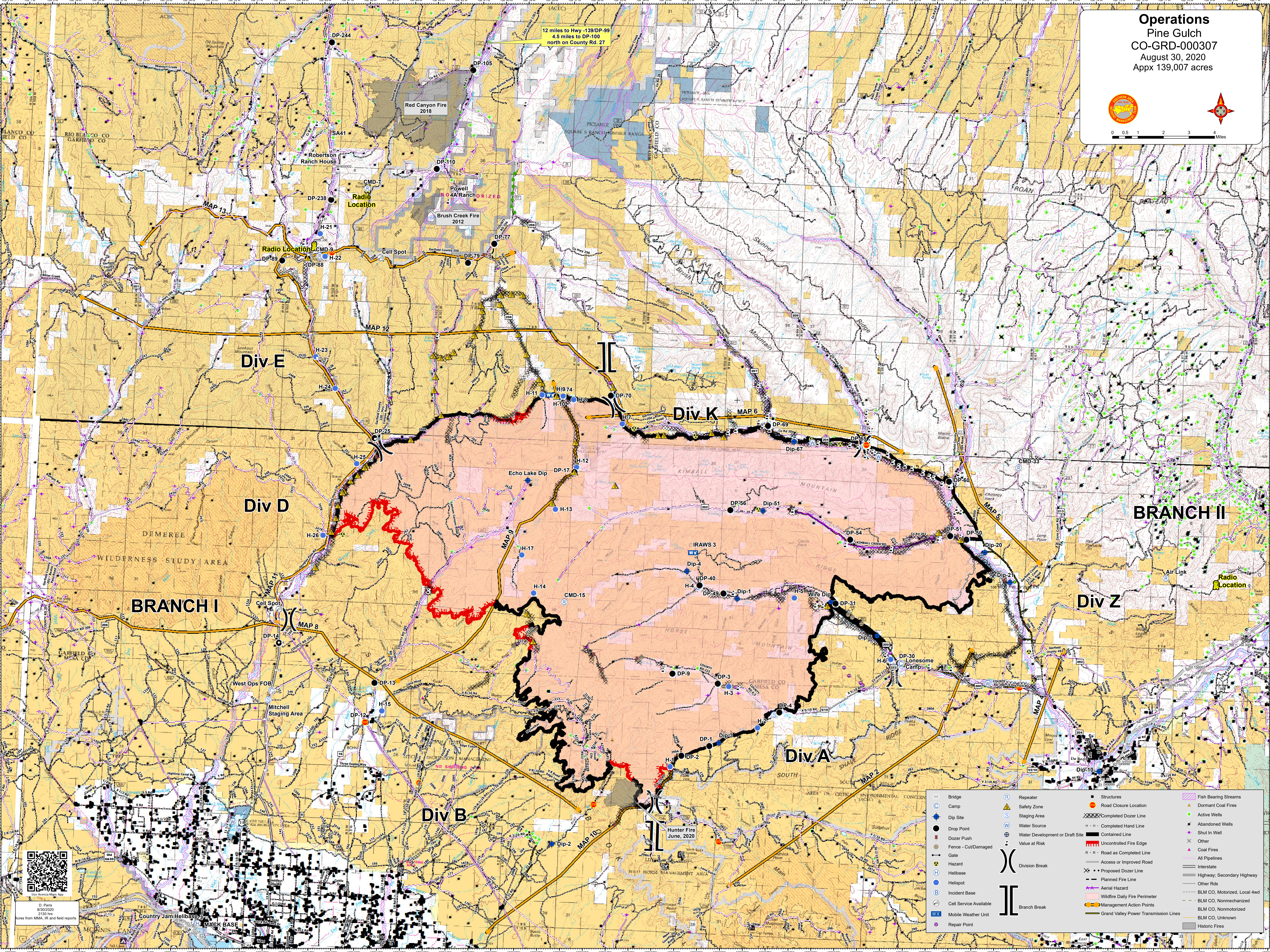


0 0.5 1 2 3 4 Miles

12 miles to Hwy -139/DP-99  
 4.5 miles to DP-100  
 north on County Rd. 27



Bridge	Repeater	Structures	Fish Bearing Streams
Camp	Safety Zone	Road Closure Location	Dormant Coal Fires
Dip Site	Staging Area	Completed Dozer Line	Active Wells
Drop Point	Water Source	Completed Hand Line	Abandoned Wells
Dozer Push	Water Development or Draft Site	Contained Line	Shut In Well
Fence - Cut/Damaged	Value at Risk	Uncontrolled Fire Edge	Other
Gate	Division Break	R - R - Road as Completed Line	Coal Fires
Hazard	Division Break	Access or Improved Road	All Pipelines
Helibase	Branch Break	Proposed Dozer Line	Highway, Secondary Highway
Helispot		Planned Fire Line	Other Rds
Incident Base		Aerial Hazard	BLM CO, Motorized, Local 4wd
Cell Service Available		Wildfire Daily Fire Perimeter	BLM CO, Nonmechanized
Mobile Weather Unit		Management Action Points	BLM CO, Unknown
Repair Point		Grand Valley Power Transmission Lines	Historic Fires



D. Parks  
 8/30/2020  
 2150 hrs  
 Acres from MMA, IR and field reports

Country Jam Helibase  
 MACK BASE