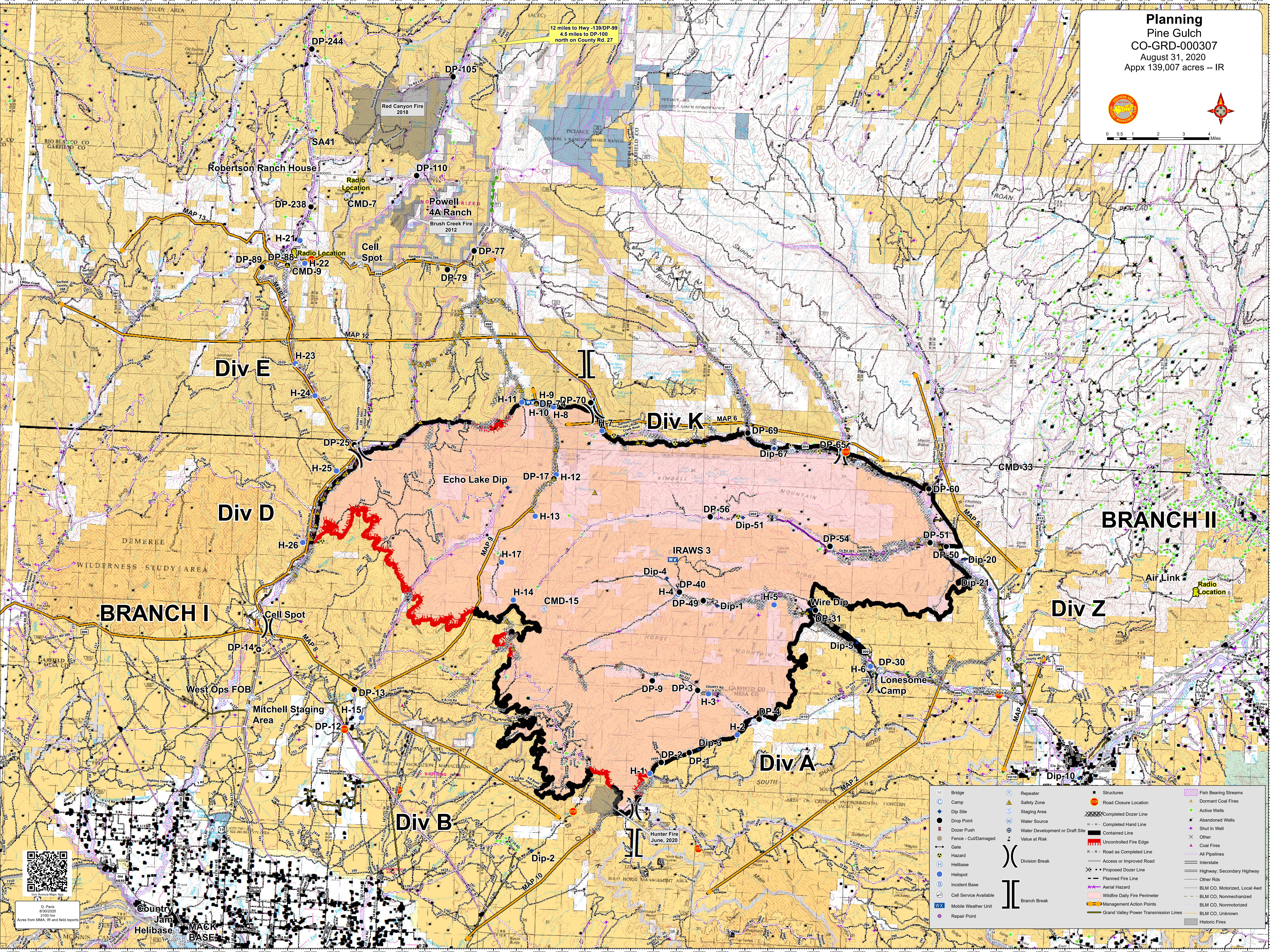


12 miles to Hwy 139/DP-99  
 4.5 miles to DP-100  
 north on County Rd. 27



⊗	Bridge	⊗	Repeater	⬜	Structures	⬜	Fish Bearing Streams
⊙	Camp	⚠	Safety Zone	⬜	Road Closure Location	⬜	Dormant Coal Fires
⊕	Dip Site	⚠	Staging Area	⬜	Completed Dozer Line	⬜	Active Wells
⬜	Drop Point	⚠	Water Source	⬜	Completed Hand Line	⬜	Abandoned Wells
⬜	Dozer Push	⚠	Water Development or Draft Site	⬜	Contained Line	⬜	Shut In Well
⬜	Fence - Cut/Damaged	⚠	Value at Risk	⬜	Uncontrolled Fire Edge	⬜	Other
⬜	Gate	⚠	Division Break	⬜	Access or Improved Road	⬜	Coal Fires
⬜	Hazard	⚠	Branch Break	⬜	Proposed Dozer Line	⬜	All Pipelines
⬜	Helibase	⚠		⬜	Planned Fire Line	⬜	Interstate
⬜	Helipod	⚠		⬜	Aerial Hazard	⬜	Highway, Secondary Highway
⬜	Incident Base	⚠		⬜	Wildfire Daily Fire Perimeter	⬜	Other Rds
⬜	Cell Service Available	⚠		⬜	Management Action Points	⬜	BLM CO, Motorized, Local 4wd
⬜	Mobile Weather Unit	⚠		⬜	Gravel Valley Power Transmission Lines	⬜	BLM CO, Nonmotorized
⬜	Repair Point	⚠		⬜		⬜	BLM CO, Unknown
⬜		⚠		⬜		⬜	Historic Fires



D Paris  
 8/30/2020  
 2100 hrs  
 Acres from MMA, IR and field reports