

# PINE GULCH CO-GRD-000307

## Transportation Map 8/31/20

IR Perimeter 8/30/20 @ 0053 139,007 ac.



Datum NAD83

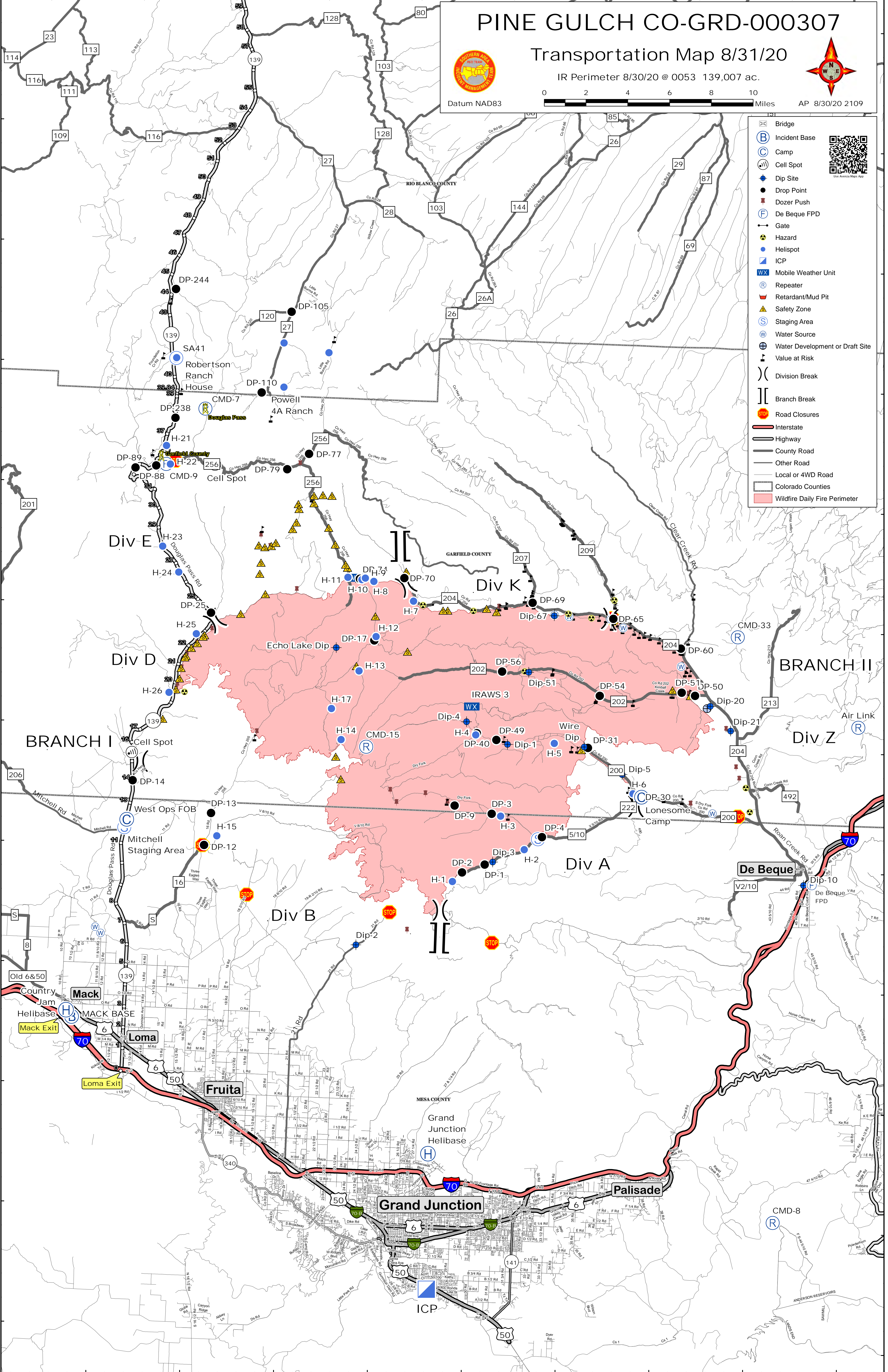


AP 8/30/20 2109

- Bridge
- Incident Base
- Camp
- Cell Spot
- Dip Site
- Drop Point
- Dozer Push
- De Beque FPD
- Gate
- Hazard
- Helispot
- ICP
- Mobile Weather Unit
- Repeater
- Retardant/Mud Pit
- Safety Zone
- Staging Area
- Water Source
- Water Development or Draft Site
- Value at Risk
- Division Break
- Branch Break
- Road Closures
- Interstate
- Highway
- County Road
- Other Road
- Local or 4WD Road
- Colorado Counties
- Wildfire Daily Fire Perimeter



Use Avenza Maps App



108°50'W 108°45'W 108°40'W 108°35'W 108°30'W 108°25'W 108°20'W 108°15'W 108°10'W

39°50'N 39°45'N 39°40'N 39°35'N 39°30'N 39°25'N 39°20'N 39°15'N 39°10'N