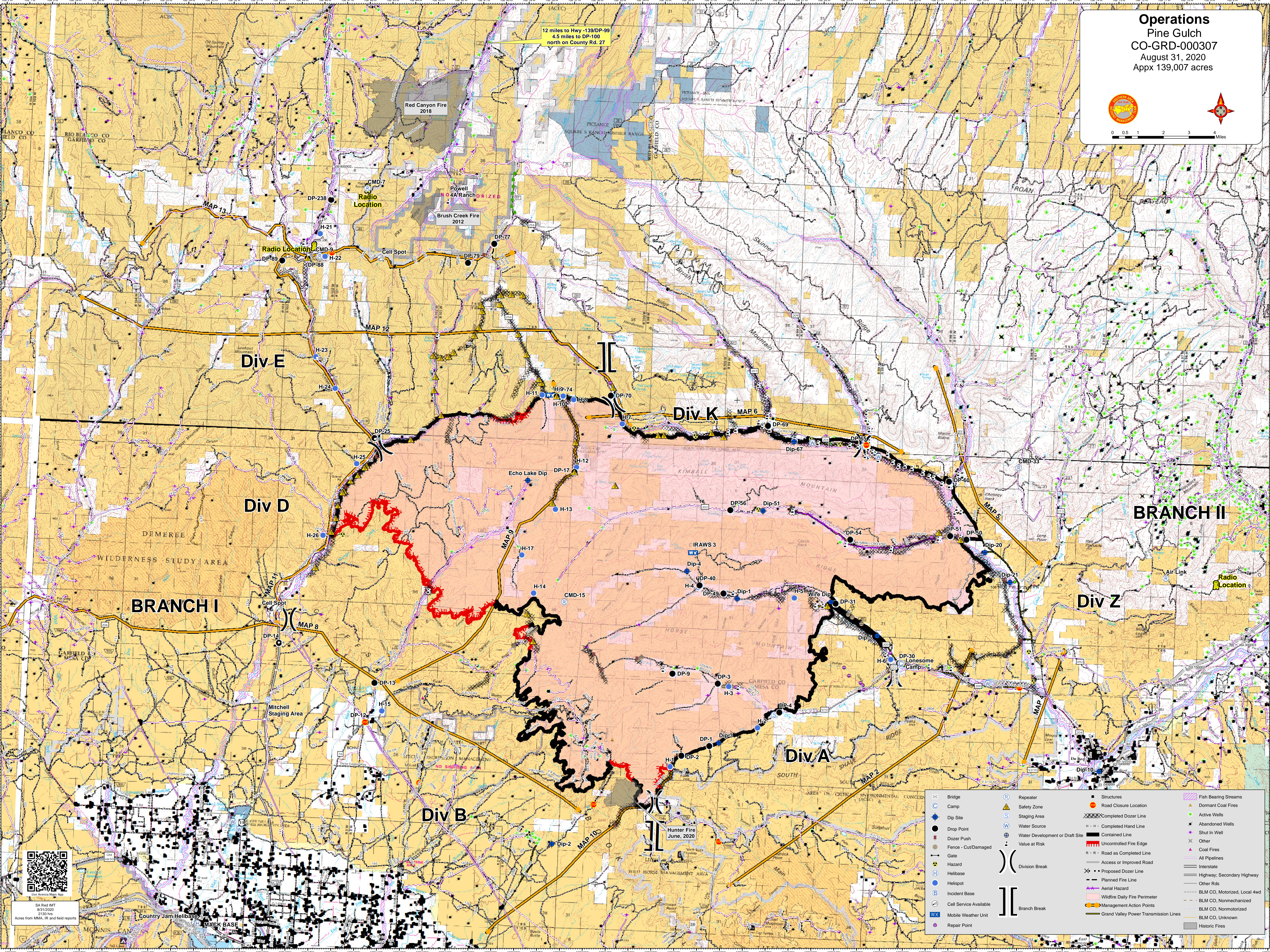
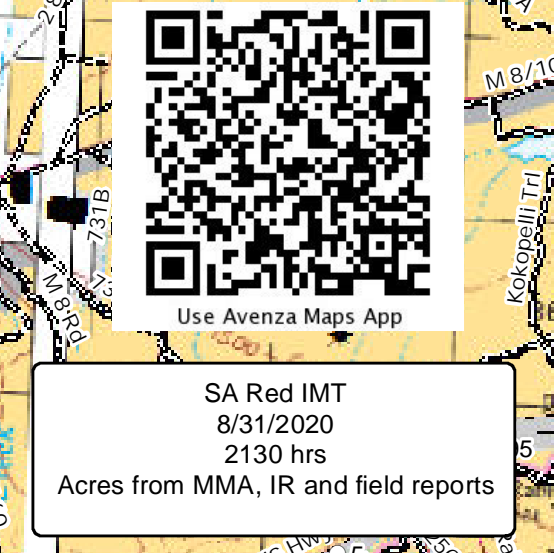


12 miles to Hwy -139/DP-99
 4.5 miles to DP-100
 north on County Rd. 27



Bridge	Repeater	Structures	Fish Bearing Streams
Camp	Safety Zone	Road Closure Location	Dormant Coal Fires
Dip Site	Staging Area	Completed Dozer Line	Active Wells
Drop Point	Water Source	Completed Hand Line	Abandoned Wells
Dozer Push	Water Development or Draft Site	Contained Line	Shut In Well
Fence - Cut/Damaged	Value at Risk	Uncontrolled Fire Edge	Other
Gate	Division Break	Road as Completed Line	Coal Fires
Hazard	Access or Improved Road	Proposed Dozer Line	All Pipelines
Helibase	Planned Fire Line	Aerial Hazard	Highway; Secondary Highway
Helispot	Wildfire Daily Fire Penimeter	Management Action Points	Other Rds
Incident Base	Branch Break	Grand Valley Power Transmission Lines	BLM CO, Motorized, Local 4wd
Cell Service Available			BLM CO, Nonmechanized
Mobile Weather Unit			BLM CO, Nonmotorized
Repair Point			BLM CO, Unknown
			Historic Fires



Country Jam Helibase
 MACK BASE