

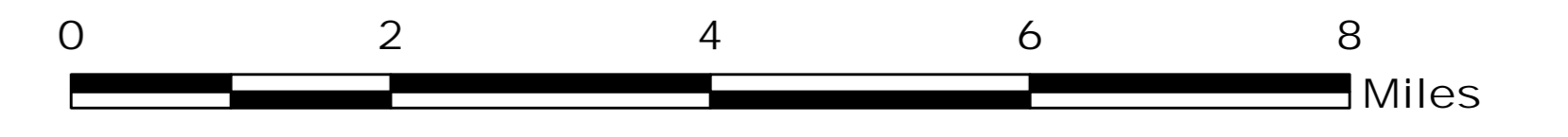
# PINE GULCH CO-GRD-000307

## Suppression Repair 09/01/20

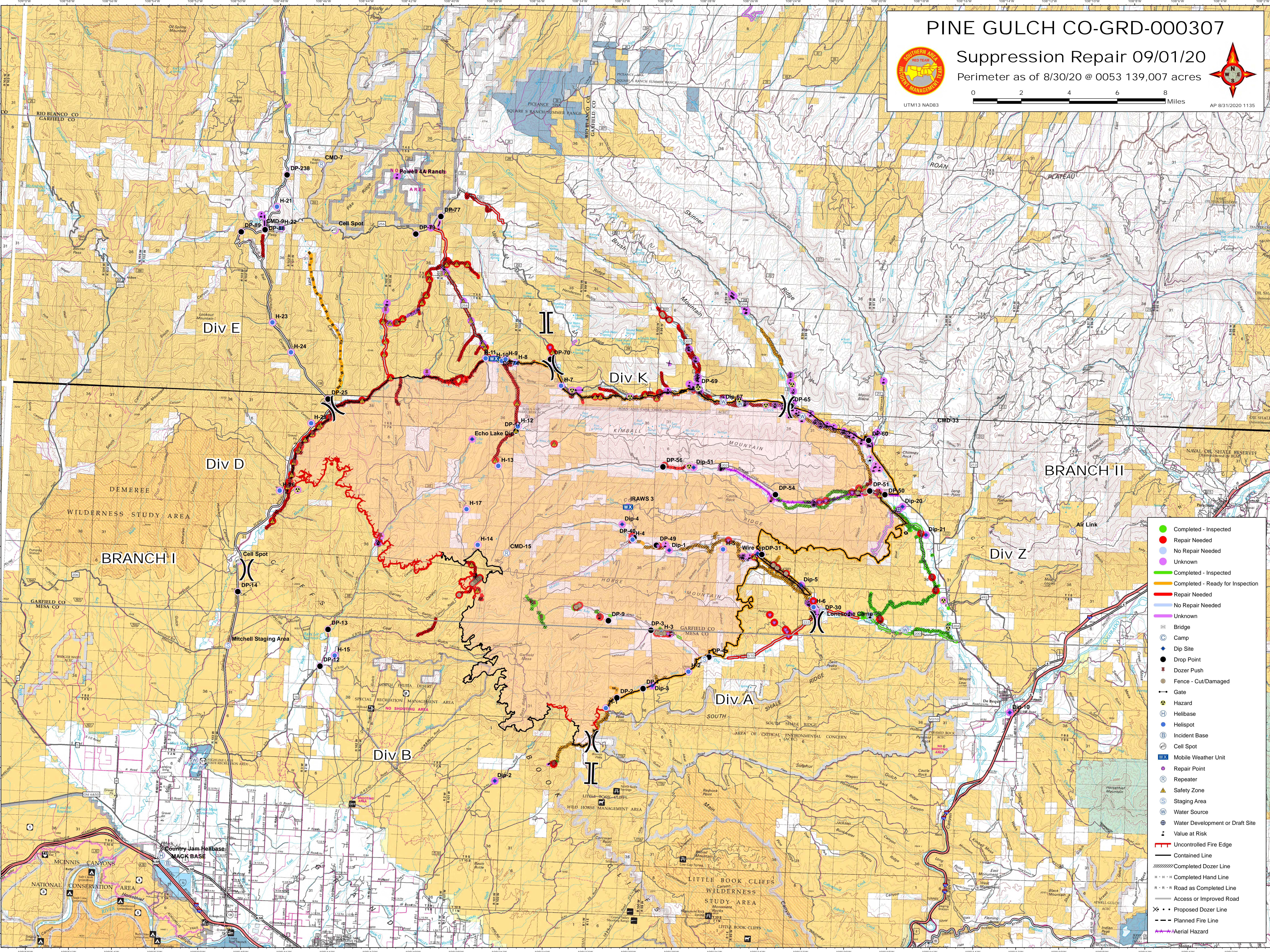
Perimeter as of 8/30/20 @ 0053 139,007 acres



UTM13 NAD83



AP 8/31/2020 1135



- Completed - Inspected
- Repair Needed
- No Repair Needed
- Unknown
- Completed - Inspected
- Completed - Ready for Inspection
- Repair Needed
- No Repair Needed
- Unknown
- ⊠ Bridge
- ⊙ Camp
- ⊙ Dip Site
- Drop Point
- ⊠ Dozer Push
- ⊠ Fence - Cut/Damaged
- ⊠ Gate
- ⊠ Hazard
- ⊠ Helibase
- ⊠ Helispot
- ⊠ Incident Base
- ⊠ Cell Spot
- ⊠ Mobile Weather Unit
- Repair Point
- ⊠ Repeater
- ⊠ Safety Zone
- ⊠ Staging Area
- ⊠ Water Source
- ⊠ Water Development or Draft Site
- ⊠ Value at Risk
- Uncontrolled Fire Edge
- Contained Line
- ⊠ Completed Dozer Line
- ⊠ Completed Hand Line
- ⊠ Road as Completed Line
- ⊠ Access or Improved Road
- ⊠ Proposed Dozer Line
- ⊠ Planned Fire Line
- ⊠ Aerial Hazard