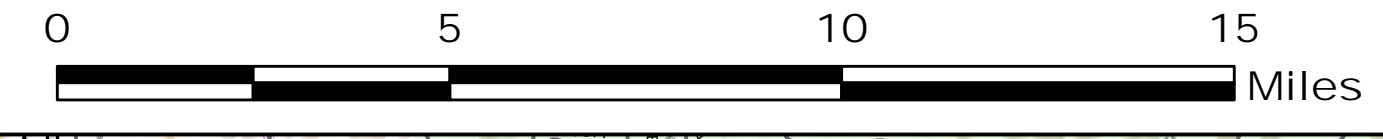
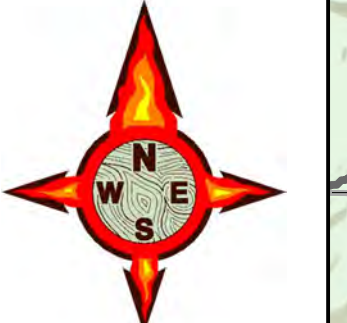
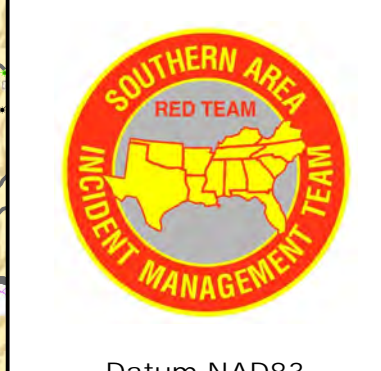


# PINE GULCH CO-GRD-000307

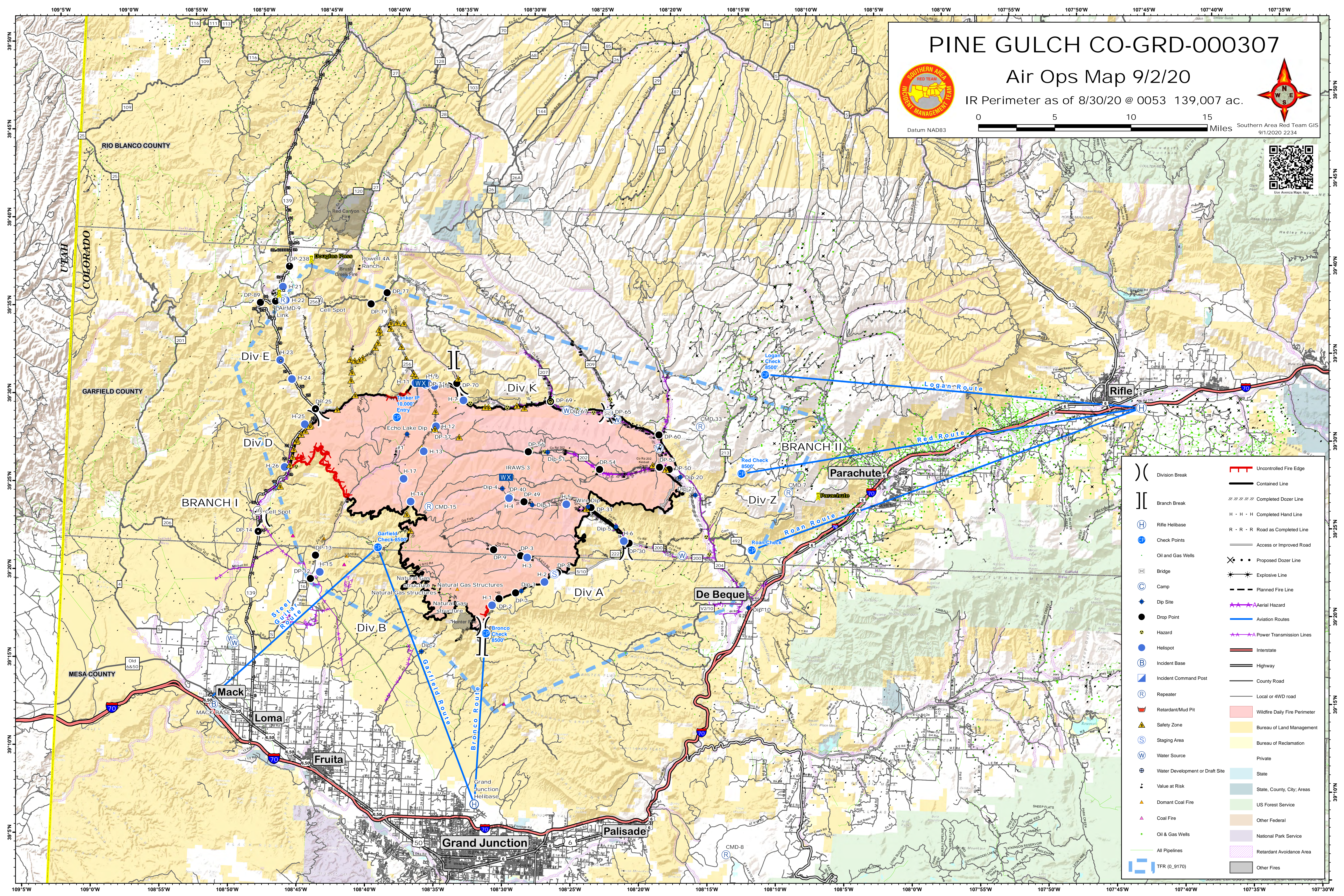
## Air Ops Map 9/2/20

IR Perimeter as of 8/30/20 @ 0053 139,007 ac.



Datum NAD83

Southern Area Red Team GIS  
9/1/2020 2234



	Division Break		Uncontrolled Fire Edge
	Branch Break		Contained Line
	Rifle Helibase		Completed Dozer Line
	Check Points		Completed Hand Line
	Oil and Gas Wells		Road as Completed Line
	Bridge		Access or Improved Road
	Camp		Proposed Dozer Line
	Dip Site		Explosive Line
	Drop Point		Planned Fire Line
	Hazard		Aerial Hazard
	Helispot		Power Transmission Lines
	Incident Base		Interstate
	Incident Command Post		Highway
	Repeater		County Road
	Retardant/Mud Pit		Local or 4WD road
	Safety Zone		Wildfire Daily Fire Perimeter
	Staging Area		Bureau of Land Management
	Water Source		Bureau of Reclamation
	Water Development or Draft Site		Private
	Value at Risk		State
	Domant Coal Fire		State, County, City, Areas
	Coal Fire		US Forest Service
	Oil & Gas Wells		Other Federal
	All Pipelines		National Park Service
	TFR (0_9170)		Retardant Avoidance Area
			Other Fires