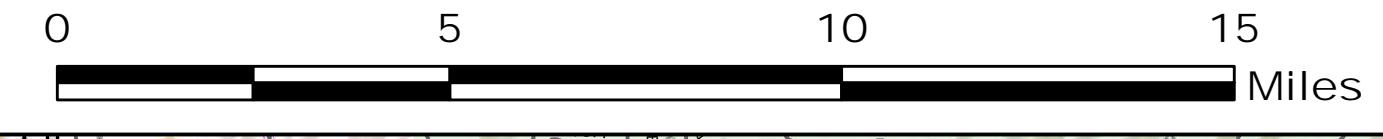
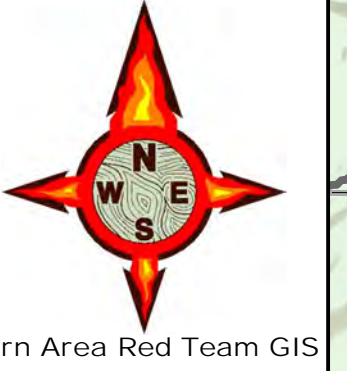


PINE GULCH CO-GRD-000307

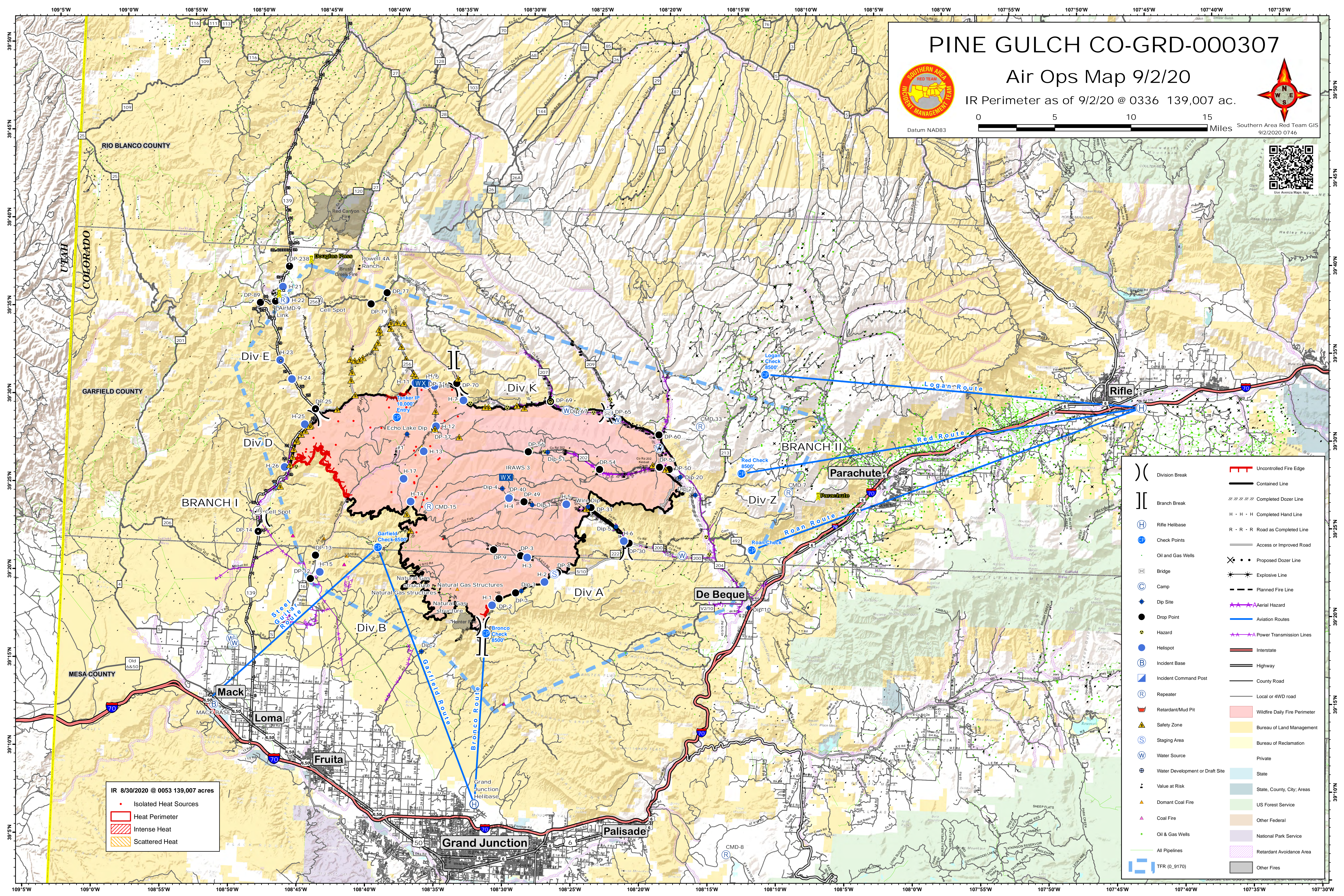
Air Ops Map 9/2/20

IR Perimeter as of 9/2/20 @ 0336 139,007 ac.



Datum NAD83

Southern Area Red Team GIS
9/2/2020 0746



IR 8/30/2020 @ 0053 139,007 acres

- Isolated Heat Sources
- Heat Perimeter
- Intense Heat
- Scattered Heat

()	Division Break	—	Uncontrolled Fire Edge
	Branch Break	—	Contained Line
(H)	Rifle Helibase	—	Completed Dozer Line
(C)	Check Points	—	Completed Hand Line
(W)	Oil and Gas Wells	—	Road as Completed Line
(B)	Bridge	—	Access or Improved Road
(C)	Camp	—	Proposed Dozer Line
(D)	Dip Site	—	Explosive Line
(H)	Drop Point	—	Planned Fire Line
(S)	Hazard	—	Aerial Hazard
(B)	Helispot	—	Power Transmission Lines
(B)	Incident Base	—	Interstate
(C)	Incident Command Post	—	Highway
(R)	Repeater	—	County Road
(M)	Retardant/Mud Pit	—	Local or 4WD road
(S)	Safety Zone	—	Wildfire Daily Fire Perimeter
(S)	Staging Area	—	Bureau of Land Management
(W)	Water Source	—	Bureau of Reclamation
(D)	Water Development or Draft Site	—	Private
(V)	Value at Risk	—	State
(C)	Dormant Coal Fire	—	State, County, City, Areas
(C)	Coal Fire	—	US Forest Service
(G)	Oil & Gas Wells	—	Other Federal
(P)	All Pipelines	—	National Park Service
(T)	TFR (0_9170)	—	Retardant Avoidance Area
		—	Other Fires