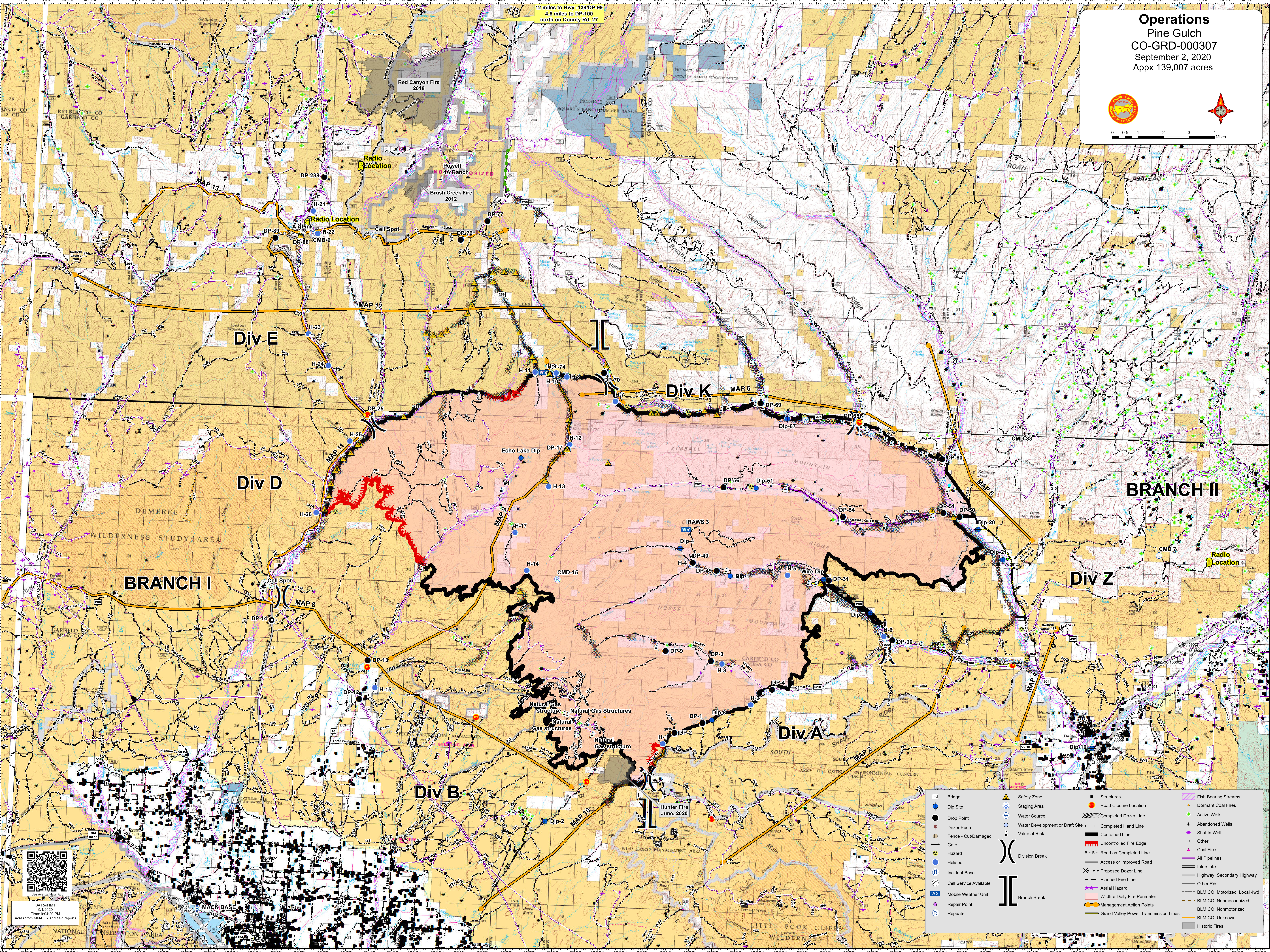


12 miles to Hwy -139/DP-99
4.5 miles to DP-100
north on County Rd. 27



SA Red MIT
9/1/2020
Time: 9:04:29 PM
Acres from MMA, IR and field reports

Bridge	Safety Zone	Structures	Fish Bearing Streams
Dip Site	Staging Area	Road Closure Location	Dormant Coal Fires
Drop Point	Water Source	Completed Dozer Line	Active Wells
Dozer Push	Water Development or Draft Site	Completed Hand Line	Abandoned Wells
Fence - Cut/Damaged	Value at Risk	Contained Line	Shut In Well
Gate	Division Break	Uncontrolled Fire Edge	Other
Hazard	Branch Break	R - R - Road as Completed Line	Coal Fires
Helispot		Access or Improved Road	All Pipelines
Incident Base		Planned Fire Line	Interstate
Cell Service Available		Wildfire Daily Fire Perimeter	Highway, Secondary Highway
Mobile Weather Unit		Management Action Points	Other Rds
Repair Point		Grand Valley Power Transmission Lines	BLM CO, Motorized, Local 4wd
Repeater			BLM CO, Nonmechanized
			BLM CO, Nonmotorized
			BLM CO, Unknown
			Historic Fires