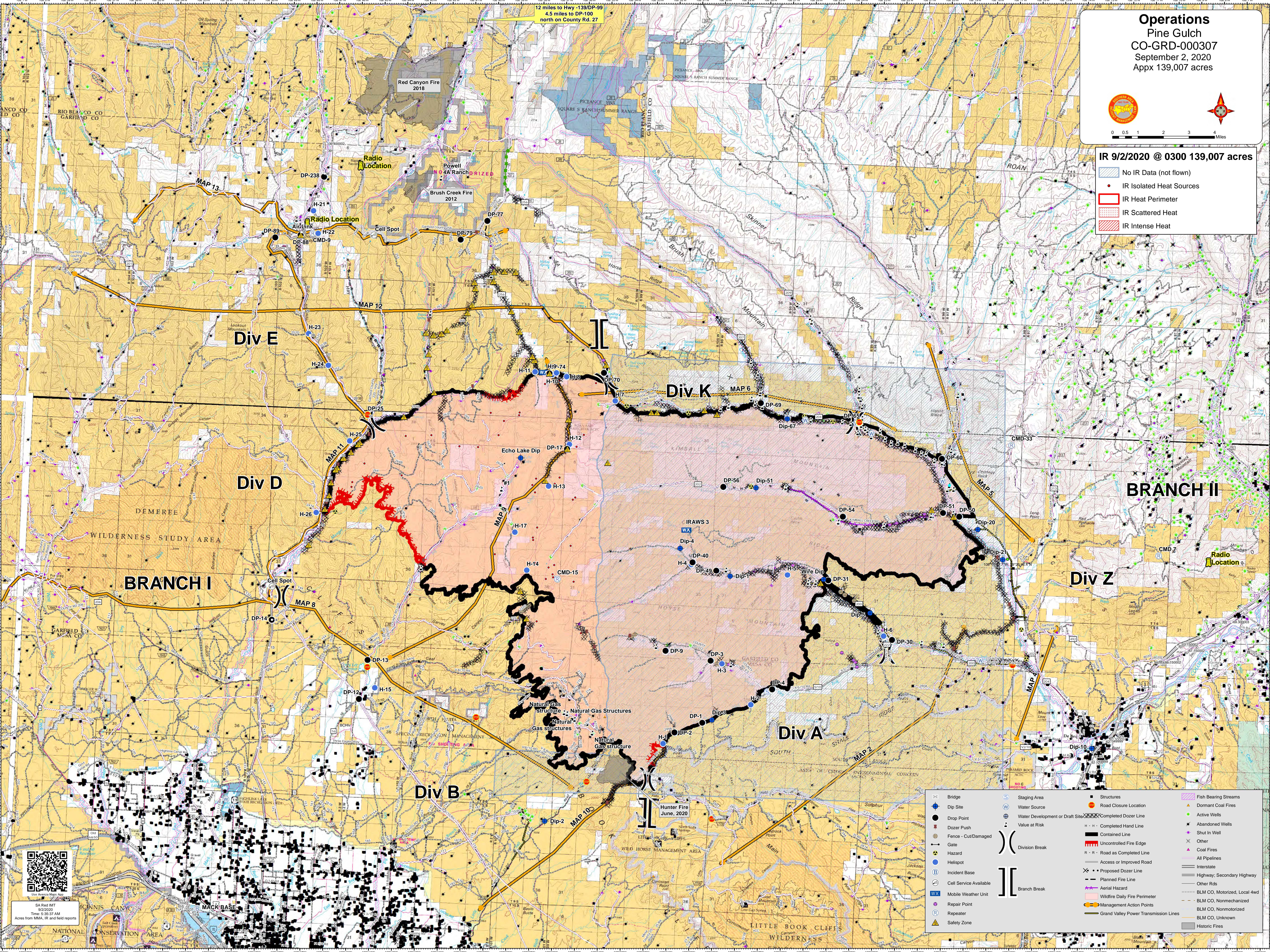


IR 9/2/2020 @ 0300 139,007 acres

- No IR Data (not flown)
- IR Isolated Heat Sources
- IR Heat Perimeter
- IR Scattered Heat
- IR Intense Heat



12 miles to Hwy -139/DP-99
 4.5 miles to DP-100
 north on County Rd. 27

Red Canyon Fire 2018

Powell
 No. 4A Ranch

Brush Creek Fire 2012

Div K

Div E

Div D

Div Z

Div A

Div B

BRANCH II

BRANCH I



SA Red MT
 9/2/2020
 Time: 5:35:37 AM
 Acres from MMA, IR and field reports

	Bridge		Staging Area		Structures		Fish Bearing Streams
	Dip Site		Water Source		Road Closure Location		Dormant Coal Fires
	Drop Point		Water Development or Draft Site		Completed Dozer Line		Active Wells
	Dozer Push		Value at Risk		Completed Hand Line		Abandoned Wells
	Fence - Cut/Damaged		Division Break		Contained Line		Shut In Well
	Gate		Branch Break		Uncontrolled Fire Edge		Other
	Hazard				Road as Completed Line		Coal Fires
	Helispot				Access or Improved Road		All Pipelines
	Incident Base				Planned Fire Line		Interstate
	Cell Service Available				Proposed Dozer Line		Highway, Secondary Highway
	Mobile Weather Unit				Wildfire Daily Fire Perimeter		Other Rds
	Repair Point				Management Action Points		BLM CO, Motorized, Local 4wd
	Repeater				Grand Valley Power Transmission Lines		BLM CO, Nonmotorized
	Safety Zone						BLM CO, Unknown
							Historic Fires