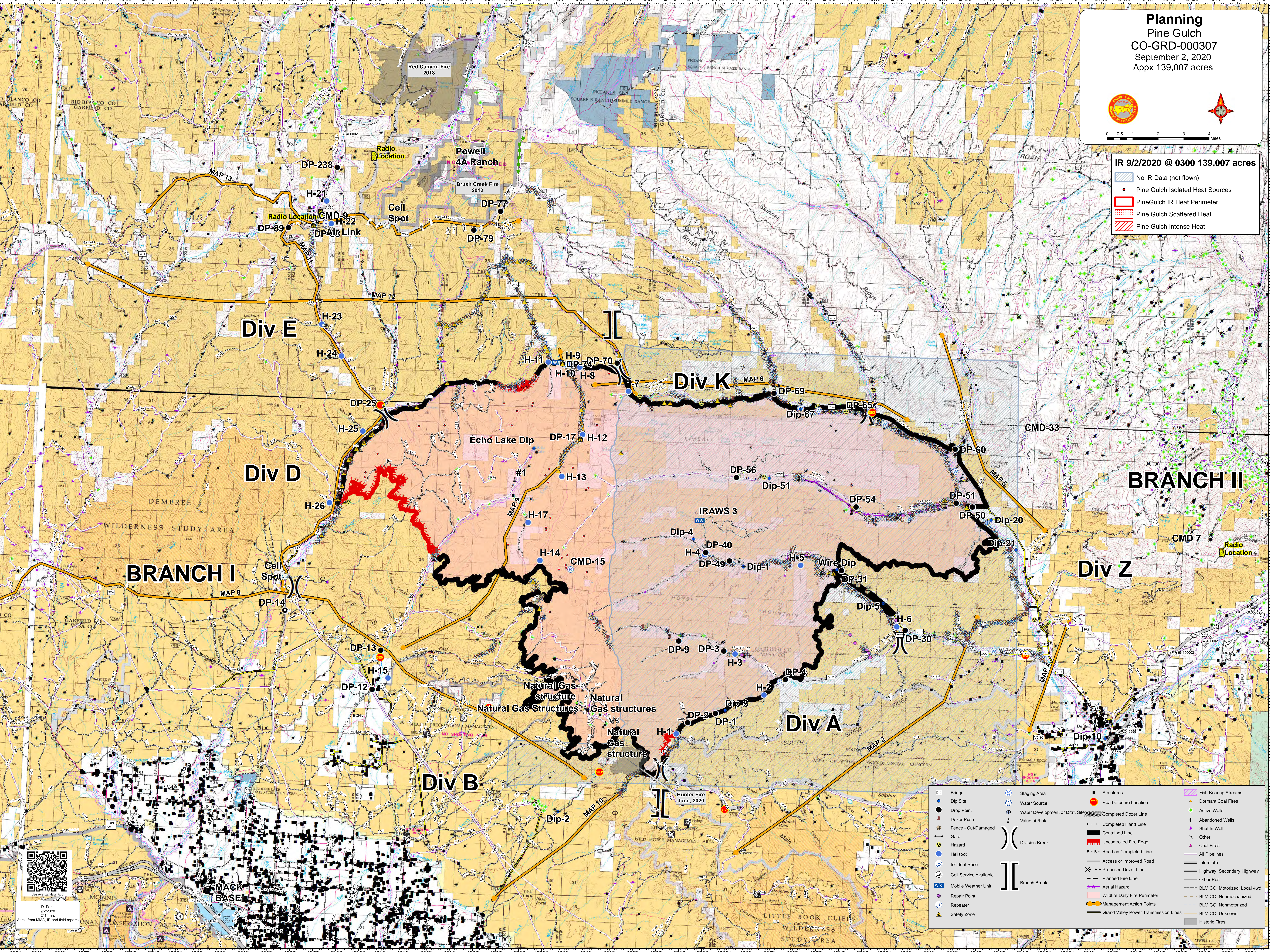




0 0.5 1 2 3 4 Miles

IR 9/2/2020 @ 0300 139,007 acres

- No IR Data (not flown)
- Pine Gulch Isolated Heat Sources
- Pine Gulch IR Heat Perimeter
- Pine Gulch Scattered Heat
- Pine Gulch Intense Heat



- | | | | |
|------------------------|---------------------------------|-------------------------------|----------------------|
| Bridge | Staging Area | Structures | Fish Bearing Streams |
| Dip Site | Water Source | Road Closure Location | Dormant Coal Fires |
| Drop Point | Water Development or Draft Site | Completed Dozer Line | Active Wells |
| Dozer Push | Value at Risk | Uncontrolled Fire Edge | Abandoned Wells |
| Fence - Cut/Damaged | Division Break | Completed Hand Line | Shut In Well |
| Gate | Branch Break | Planned Fire Line | Other |
| Hazard | Access or Improved Road | Proposed Dozer Line | Coal Fires |
| Helispot | Highway; Secondary Highway | Wildfire Daily Fire Perimeter | All Pipelines |
| Incident Base | Other Rds | Management Action Points | Interstate |
| Cell Service Available | BLM CO, Motorized, Local 4wd | Mobile Weather Unit | BLM CO, Nonmotorized |
| Repair Point | BLM CO, Nonmotorized | Repeater | BLM CO, Unknown |
| Safety Zone | Historic Fires | Hunter Fire June, 2020 | |

D Paris
 9/2/2020
 2114 hrs
 Acres from MMA, IR and field reports