



# PINE GULCH CO-GRD-000307

## Branch I Suppression Repair 09/03/20

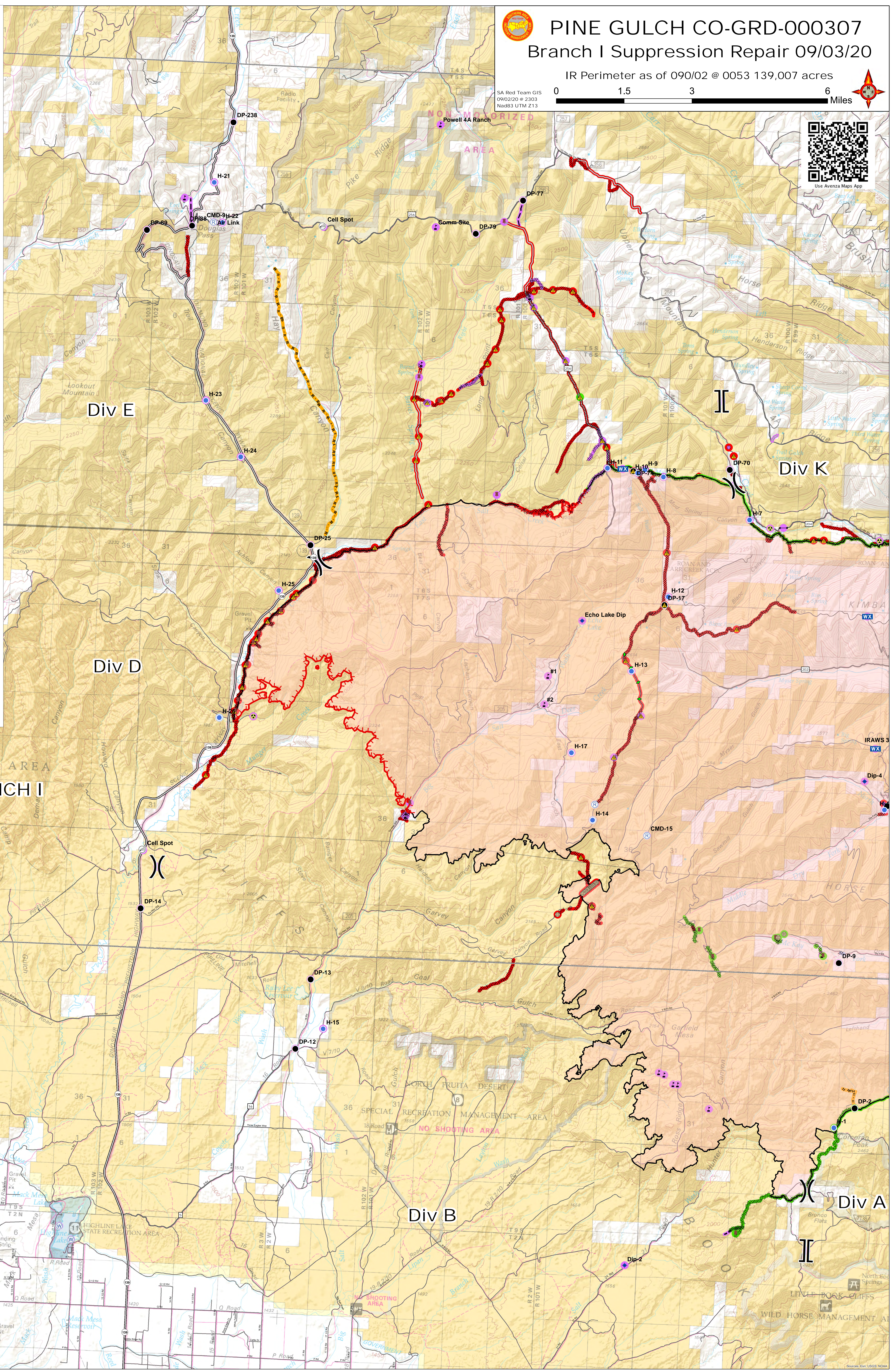
IR Perimeter as of 09/02 @ 0053 139,007 acres

SA Red Team GIS  
09/03/20 @ 2:03  
Nad83 UTM Z13



Use Avenza Maps App

- Division Break
  - Branch Break
  - Dip Site
  - Drop Point
  - Dozer Push
  - Fence - Cut/Damaged
  - Gate
  - Hazard
  - Helispot
  - Cell Spot
  - Mobile Weather Unit
  - Repair Point
  - Repeater
  - Safety Zone
  - Water Source
  - Value at Risk
  - Uncontrolled Fire Edge
  - Contained Line
  - Completed Dozer Line
  - Completed Hand Line
  - Road as Completed Line
  - Access or Improved Road
  - Completed Plow Line
  - Planned Fire Line
  - Pine Gulch Fire
  - Completed - Inspected
  - Repair Needed
  - No Repair Needed
  - Unknown
  - Completed - Inspected
  - Completed - Ready for Inspection
  - Repair Needed
  - No Repair Needed
  - Unknown
- ### Main Roads
- Type
- Interstate
  - Highway
  - Secondary Highway
  - County Road
  - Other
  - Interstate
  - Highway or ramp
  - Local connector
  - Local or 4WD road
  - Tunnel
  - Ferry
  - Bureau of Land Management
  - Bureau of Reclamation
  - Private
  - State, County, City, Areas
  - Colorado Counties



BRANCH I

Div E

Div D

Div B

Div A

Div K

