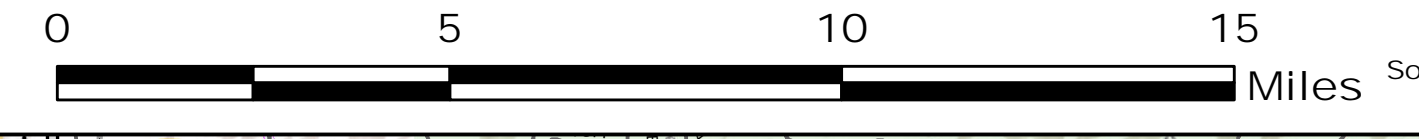
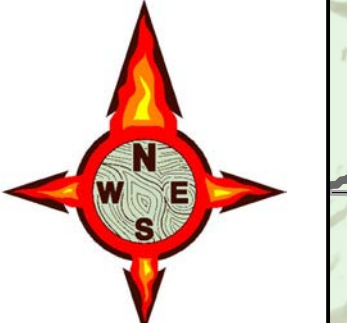


PINE GULCH CO-GRD-000307

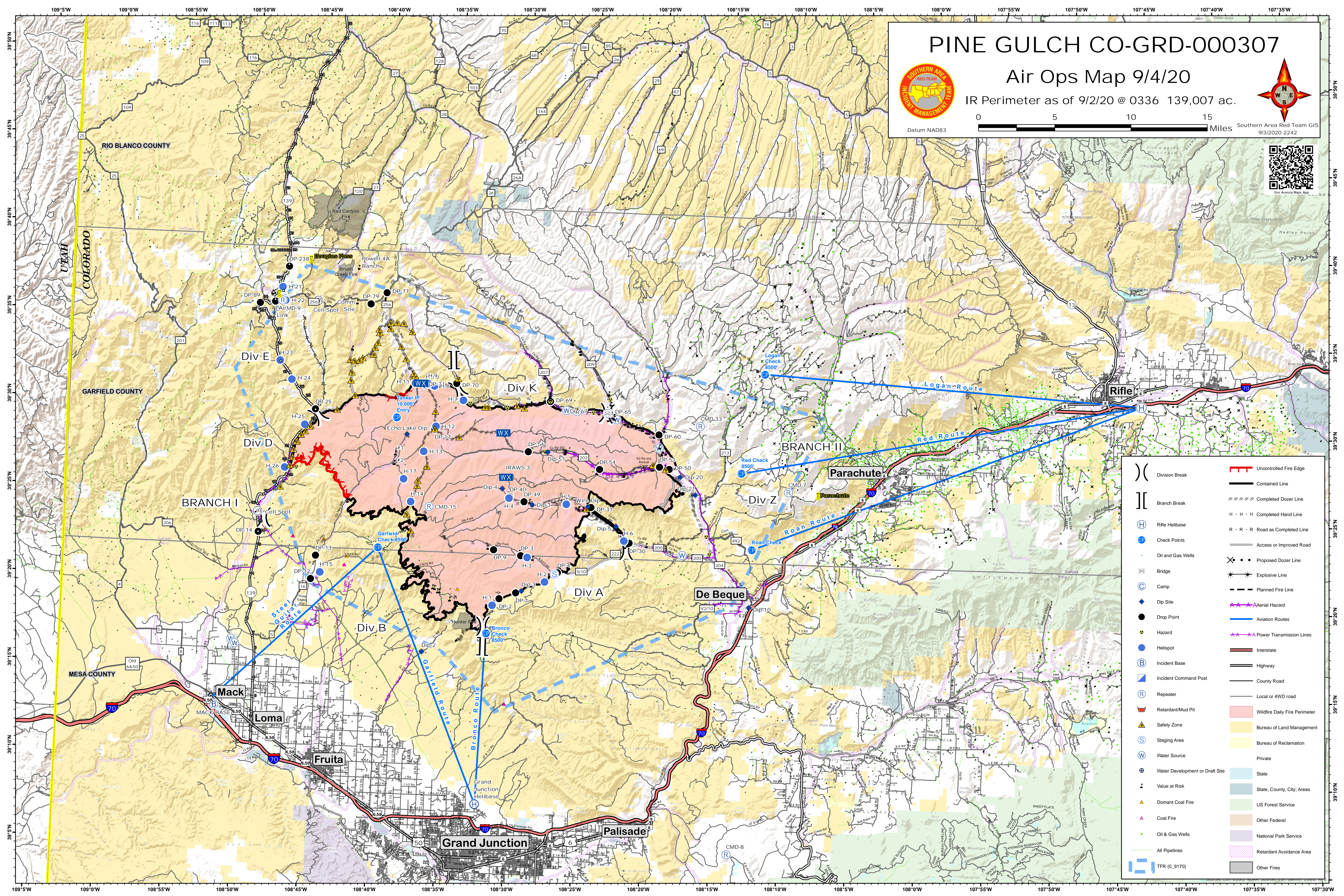
Air Ops Map 9/4/20

IR Perimeter as of 9/2/20 @ 0336 139,007 ac.



Datum NAD83

Southern Area Red Team GIS
9/3/2020 2242



| | | | |
|--|---------------------------------|--|-------------------------------|
| | Division Break | | Uncontrolled Fire Edge |
| | Branch Break | | Contained Line |
| | Rifle Helibase | | Completed Dozer Line |
| | Check Points | | Completed Hand Line |
| | Oil and Gas Wells | | Road as Completed Line |
| | Bridge | | Access or Improved Road |
| | Camp | | Proposed Dozer Line |
| | Dip Site | | Explosive Line |
| | Drop Point | | Planned Fire Line |
| | Hazard | | Aerial Hazard |
| | Helispot | | Power Transmission Lines |
| | Incident Base | | Interstate |
| | Incident Command Post | | Highway |
| | Repeater | | County Road |
| | Retardant/Mud Pit | | Local or 4WD road |
| | Safety Zone | | Wildfire Daily Fire Perimeter |
| | Staging Area | | Bureau of Land Management |
| | Water Source | | Bureau of Reclamation |
| | Water Development or Draft Site | | Private |
| | Value at Risk | | State |
| | Domant Coal Fire | | State, County, City, Areas |
| | Coal Fire | | US Forest Service |
| | Oil & Gas Wells | | Other Federal |
| | All Pipelines | | National Park Service |
| | TFR (0_9170) | | Retardant Avoidance Area |
| | | | Other Fires |