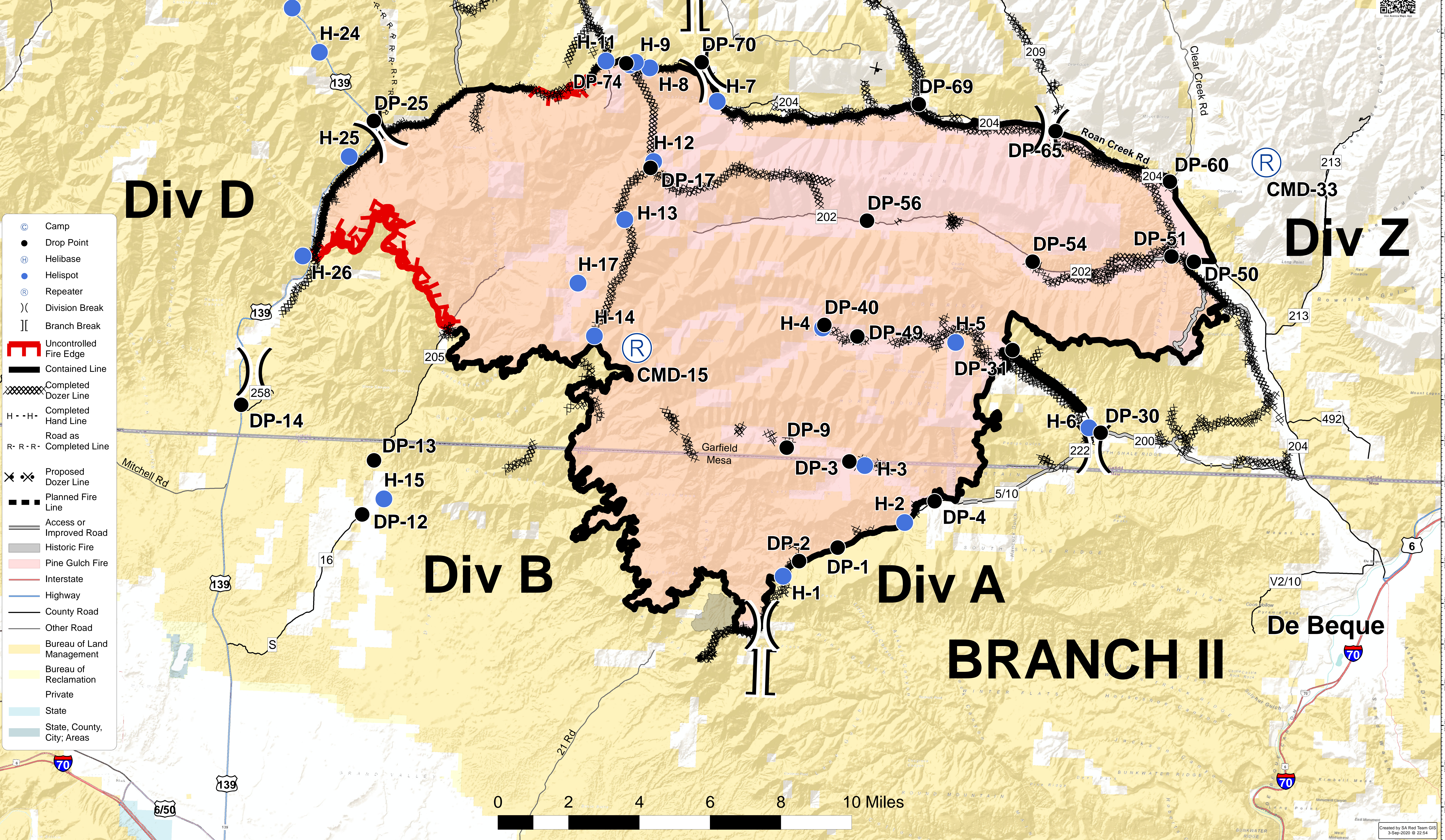


Approx. 139,007 ac from
9/2/2020 @ 0336 hrs
NIROPS Flight



BRANCH I



- Camp
- Drop Point
- Ⓜ Helibase
- Helispot
- Ⓜ Repeater
- () Division Break
- [[Branch Break
- 🔥 Uncontrolled Fire Edge
- Contained Line
- ⊘ Completed Dozer Line
- - - Completed Hand Line
- R - R - R Completed Road
- ⊗ Proposed Dozer Line
- ⋯ Planned Fire Line
- Access or Improved Road
- ▬ Historic Fire
- ▬ Pine Gulch Fire
- ▬ Interstate
- ▬ Highway
- ▬ County Road
- ▬ Other Road
- ▬ Bureau of Land Management
- ▬ Bureau of Reclamation
- ▬ Private
- ▬ State
- ▬ State, County, City, Areas

De Beque