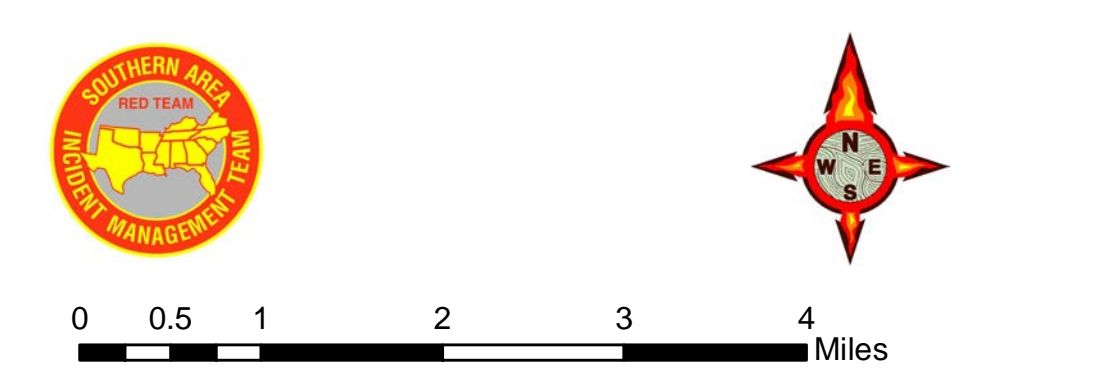
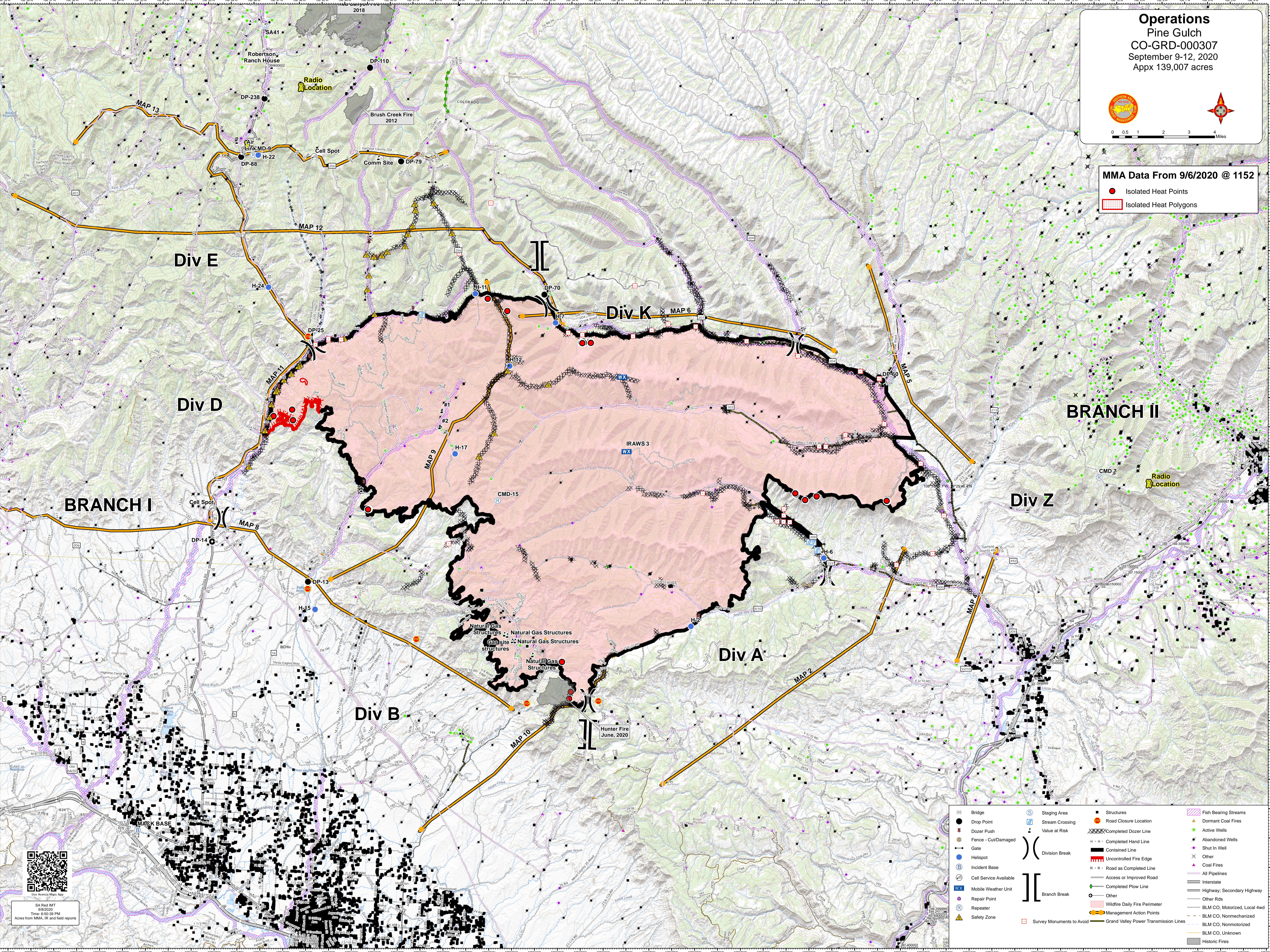


Operations
Pine Gulch
CO-GRD-000307
 September 9-12, 2020
 Appx 139,007 acres



MMA Data From 9/6/2020 @ 1152

- Isolated Heat Points
- Isolated Heat Polygons



● Bridge	○ Staging Area	■ Structures	▨ Fish Bearing Streams
● Drop Point	○ Stream Crossing	● Road Closure Location	▲ Dormant Coal Fires
● Dozer Push	○ Value at Risk	● Completed Dozer Line	▲ Active Wells
● Fence - Cut/Damaged	○ Division Break	● Contained Line	★ Abandoned Wells
● Gate	○ Branch Break	● Uncontained Fire Edge	★ Shut In Well
● Helispot		● All Pipelines	★ Other
● Incident Base		● Access or Improved Road	★ Coal Fires
● Cell Service Available		● Completed Plow Line	★ BLM CO, Nonmechanized
● Mobile Weather Unit		● Other	★ BLM CO, Unknown
● Repair Point		● Wildfire Daily Fire Perimeter	★ Historic Fires
● Repeater		● Management Action Points	
● Safety Zone		● Grand Valley Power Transmission Lines	
		● Survey Monuments to Avoid	

