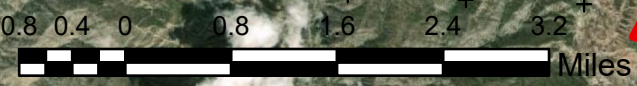
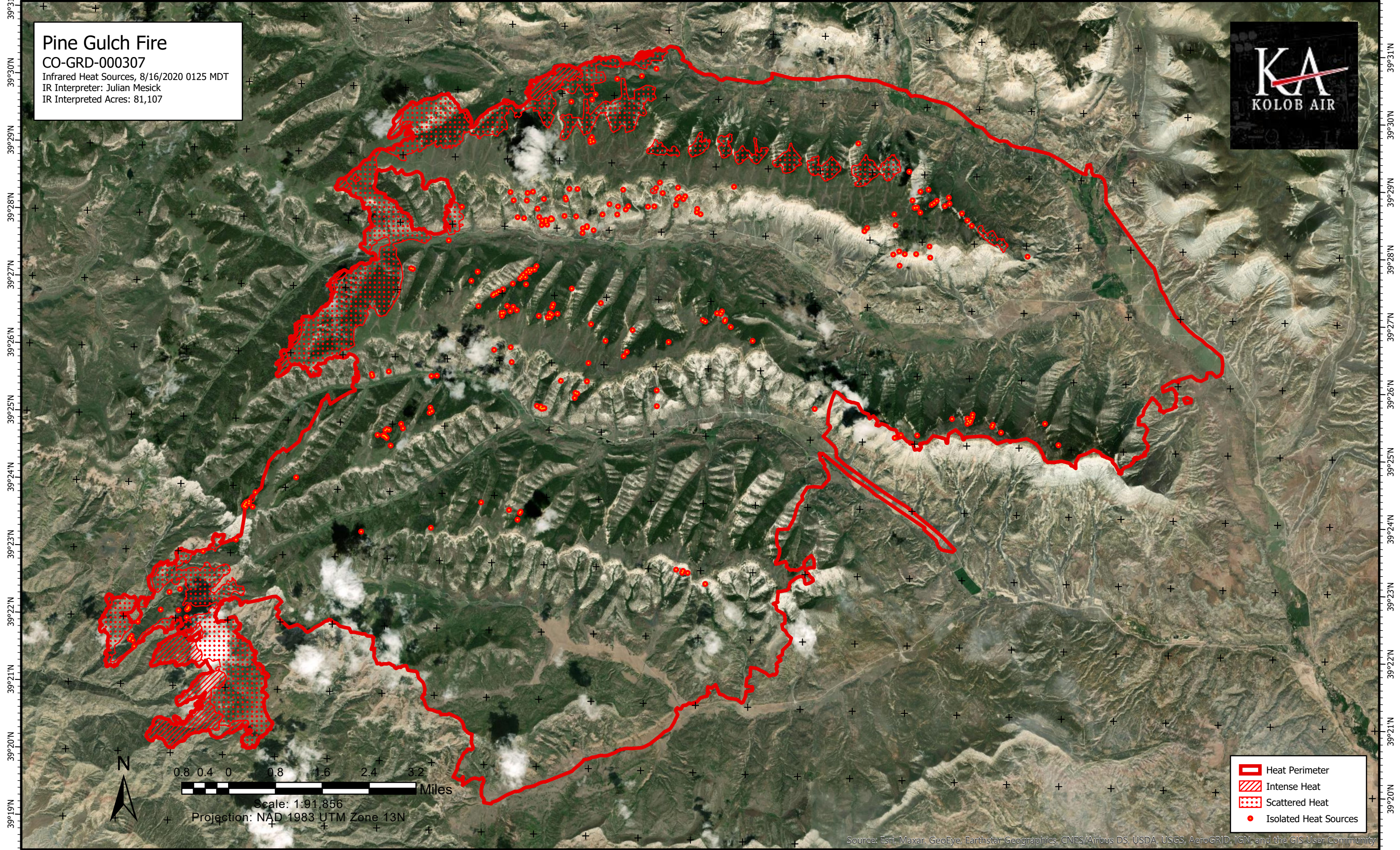


108°40'W 108°39'W 108°38'W 108°37'W 108°36'W 108°35'W 108°34'W 108°33'W 108°32'W 108°31'W 108°30'W 108°29'W 108°28'W 108°27'W 108°26'W 108°25'W 108°24'W 108°23'W 108°22'W 108°21'W 108°20'W 108°19'W 108°18'W 108°17'W 108°16'W 108°15'W

Pine Gulch Fire

CO-GRD-000307
Infrared Heat Sources, 8/16/2020 0125 MDT
IR Interpreter: Julian Mesick
IR Interpreted Acres: 81,107



Scale: 1:91,856
Projection: NAD 1983 UTM Zone 13N

- Heat Perimeter
- Intense Heat
- Scattered Heat
- Isolated Heat Sources

Source: Esri, Maxar, GeoEye, Earthstar Geographics, CNES/Airbus DS, USDA, USGS, AeroGRID, IGN, and the GIS User Community

108°39'W 108°38'W 108°37'W 108°36'W 108°35'W 108°34'W 108°33'W 108°32'W 108°31'W 108°30'W 108°29'W 108°28'W 108°27'W 108°26'W 108°25'W 108°24'W 108°23'W 108°22'W 108°21'W 108°20'W 108°19'W 108°18'W 108°17'W 108°16'W 108°15'W