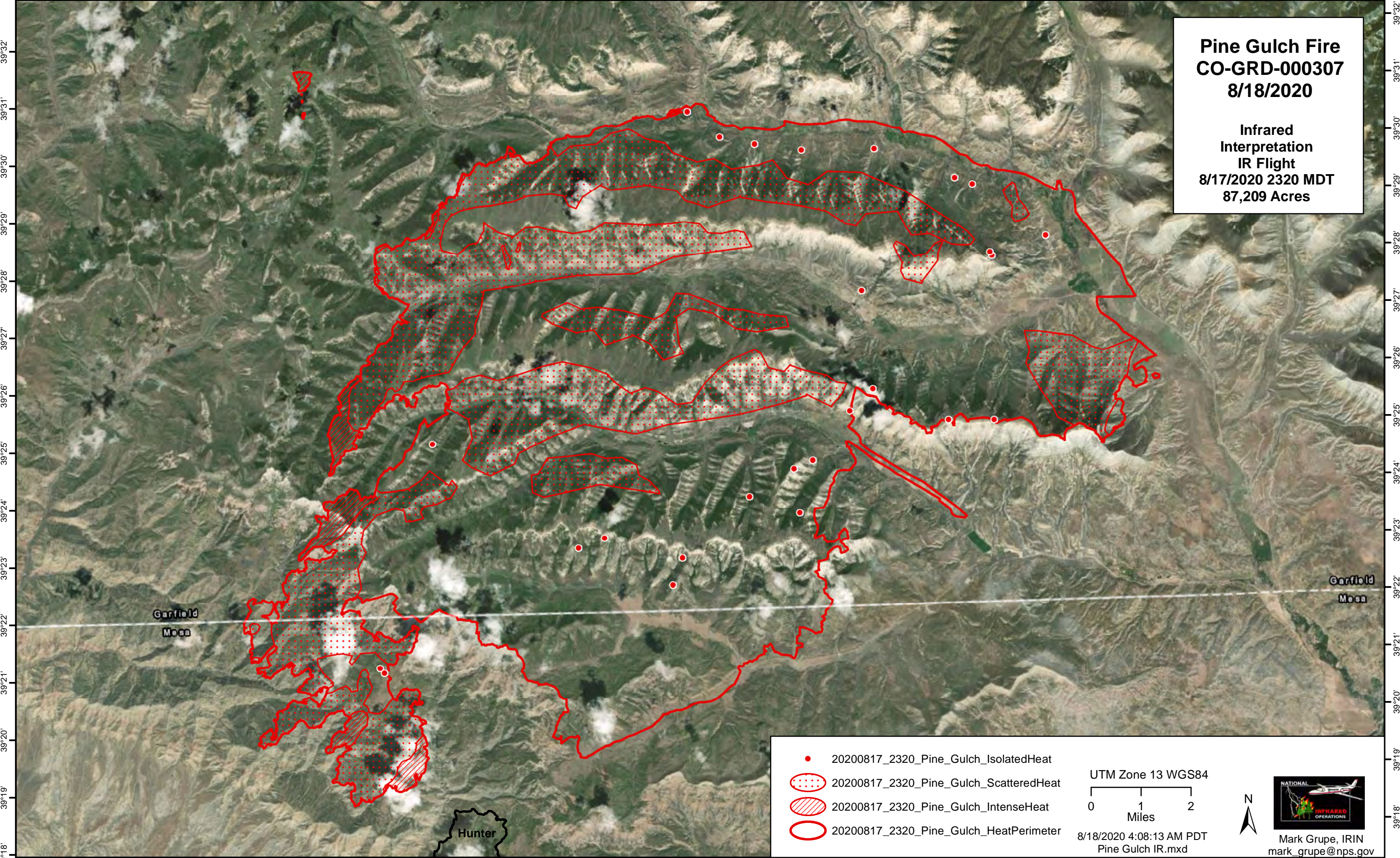


-108°43' -108°42' -108°41' -108°40' -108°39' -108°38' -108°37' -108°36' -108°35' -108°34' -108°33' -108°32' -108°31' -108°30' -108°29' -108°28' -108°27' -108°26' -108°25' -108°24' -108°23' -108°22' -108°21' -108°20' -108°19' -108°18' -108°17' -108°16' -108°15' -108°14' -108°13'



Pine Gulch Fire
CO-GRD-000307
8/18/2020

Infrared
Interpretation
IR Flight
8/17/2020 2320 MDT
87,209 Acres

- 20200817_2320_Pine_Gulch_IsolatedHeat
- ◌ 20200817_2320_Pine_Gulch_ScatteredHeat
- ▨ 20200817_2320_Pine_Gulch_IntenseHeat
- 20200817_2320_Pine_Gulch_HeatPerimeter

UTM Zone 13 WGS84
0 1 2
Miles

8/18/2020 4:08:13 AM PDT
Pine Gulch IR.mxd



Mark Grupe, IRIN
mark_grupe@nps.gov

-108°43' -108°42' -108°41' -108°40' -108°39' -108°38' -108°37' -108°36' -108°35' -108°34' -108°33' -108°32' -108°31' -108°30' -108°29' -108°28' -108°27' -108°26' -108°25' -108°24' -108°23' -108°22' -108°21' -108°20' -108°19' -108°18' -108°17' -108°16' -108°15' -108°14'