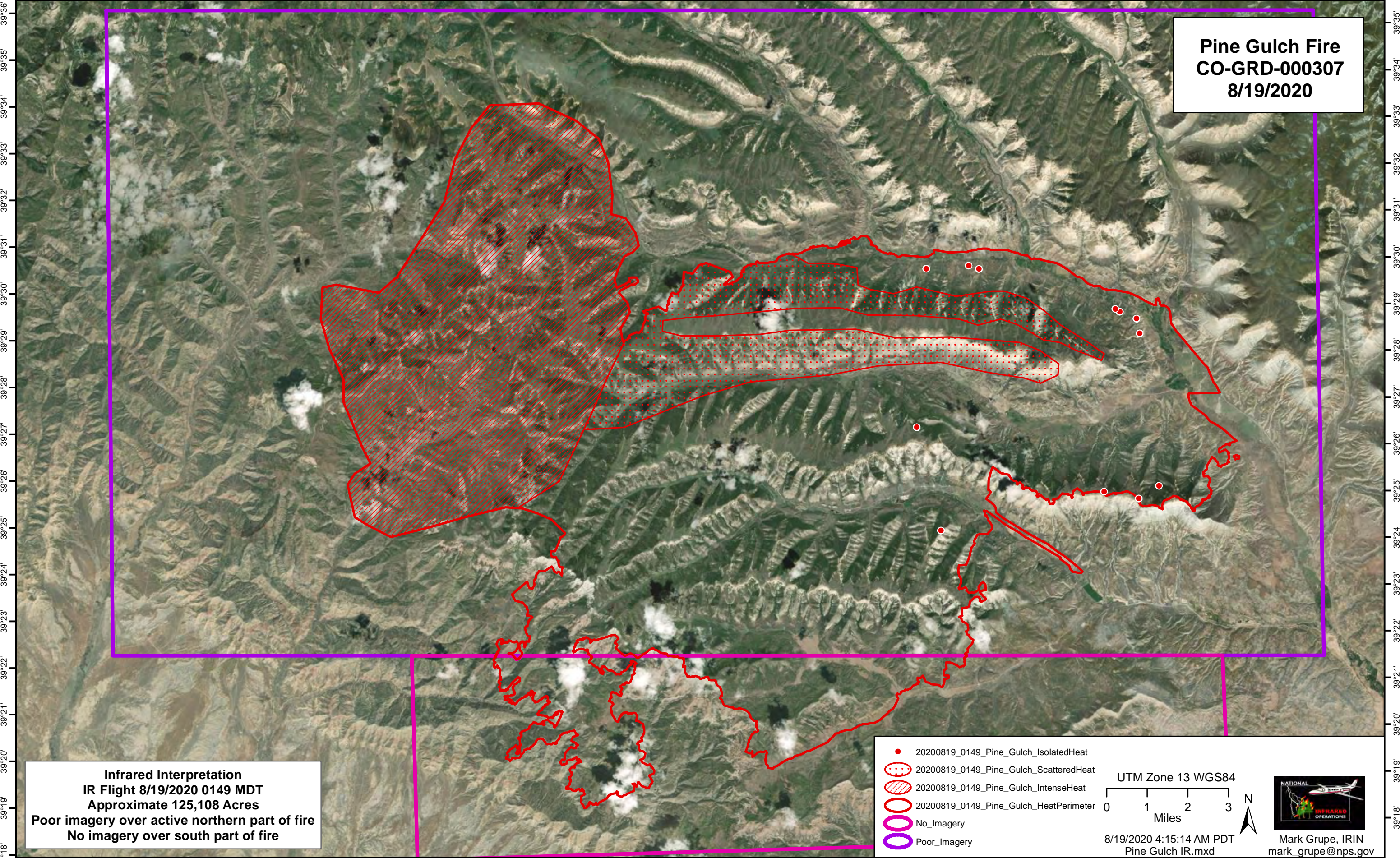


-108°51' -108°50' -108°49' -108°48' -108°47' -108°46' -108°45' -108°44' -108°43' -108°42' -108°41' -108°40' -108°39' -108°38' -108°37' -108°36' -108°35' -108°34' -108°33' -108°32' -108°31' -108°30' -108°29' -108°28' -108°27' -108°26' -108°25' -108°24' -108°23' -108°22' -108°21' -108°20' -108°19' -108°18' -108°17' -108°16' -108°15' -108°14'

**Pine Gulch Fire  
CO-GRD-000307  
8/19/2020**



**Infrared Interpretation  
IR Flight 8/19/2020 0149 MDT  
Approximate 125,108 Acres  
Poor imagery over active northern part of fire  
No imagery over south part of fire**

● 20200819\_0149\_Pine\_Gulch\_IsolatedHeat  
⋯ 20200819\_0149\_Pine\_Gulch\_ScatteredHeat  
▨ 20200819\_0149\_Pine\_Gulch\_IntenseHeat  
○ 20200819\_0149\_Pine\_Gulch\_HeatPerimeter  
○ No\_Imagery  
○ Poor\_Imagery

UTM Zone 13 WGS84  
0 1 2 3 Miles

8/19/2020 4:15:14 AM PDT  
Pine Gulch IR.mxd

Mark Grupe, IRIN  
mark\_grupe@nps.gov

-108°51' -108°50' -108°49' -108°48' -108°47' -108°46' -108°45' -108°44' -108°43' -108°42' -108°41' -108°40' -108°39' -108°38' -108°37' -108°36' -108°35' -108°34' -108°33' -108°32' -108°31' -108°30' -108°29' -108°28' -108°27' -108°26' -108°25' -108°24' -108°23' -108°22' -108°21' -108°20' -108°19' -108°18' -108°17' -108°16' -108°15'