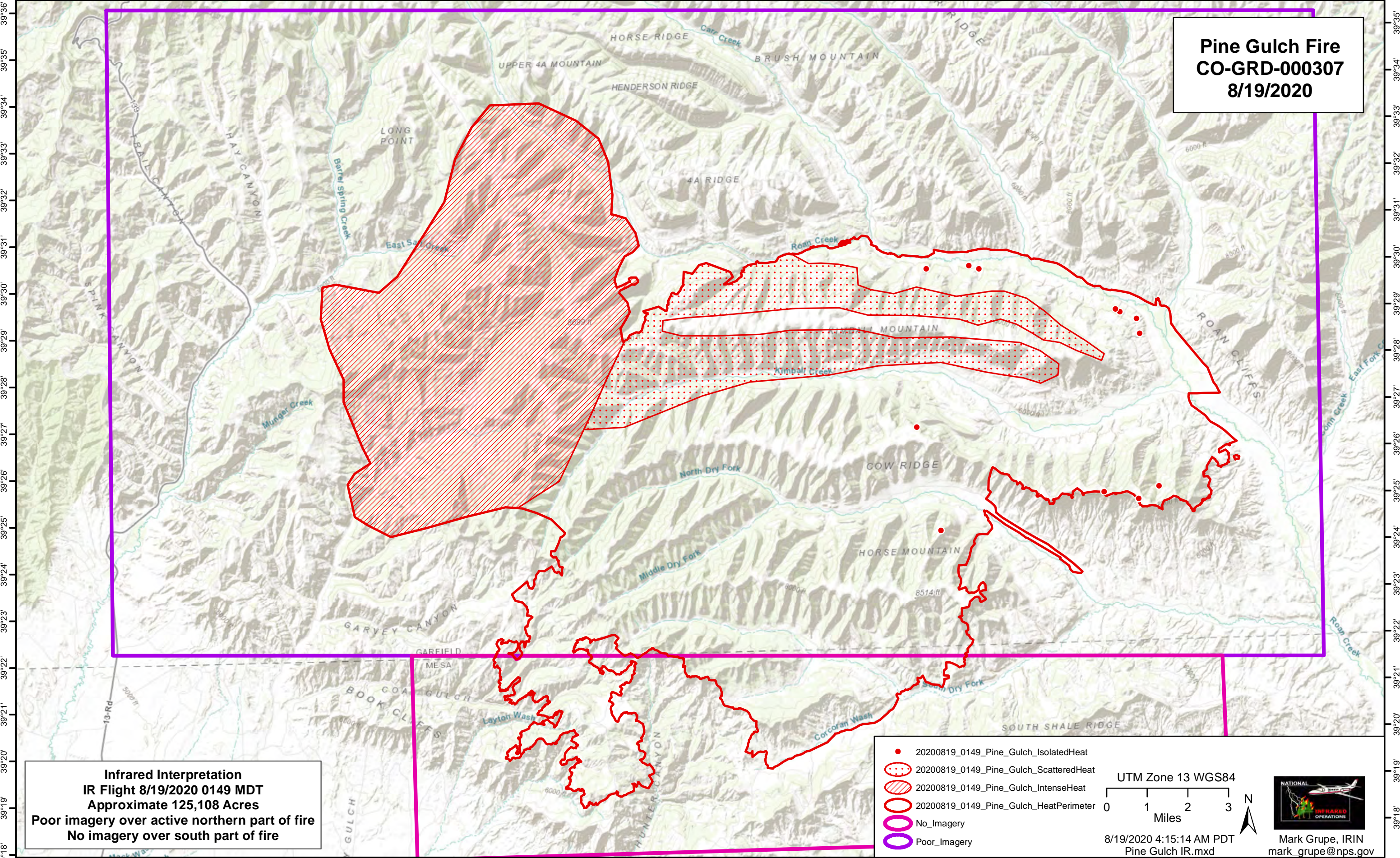


-108°51' -108°50' -108°49' -108°48' -108°47' -108°46' -108°45' -108°44' -108°43' -108°42' -108°41' -108°40' -108°39' -108°38' -108°37' -108°36' -108°35' -108°34' -108°33' -108°32' -108°31' -108°30' -108°29' -108°28' -108°27' -108°26' -108°25' -108°24' -108°23' -108°22' -108°21' -108°20' -108°19' -108°18' -108°17' -108°16' -108°15' -108°14'



Pine Gulch Fire
CO-GRD-000307
8/19/2020

Infrared Interpretation
IR Flight 8/19/2020 0149 MDT
Approximate 125,108 Acres
Poor imagery over active northern part of fire
No imagery over south part of fire

- 20200819_0149_Pine_Gulch_IsolatedHeat
- ◌ 20200819_0149_Pine_Gulch_ScatteredHeat
- ▨ 20200819_0149_Pine_Gulch_IntenseHeat
- 20200819_0149_Pine_Gulch_HeatPerimeter
- No_Imagery
- Poor_Imagery

UTM Zone 13 WGS84

0 1 2 3 Miles

8/19/2020 4:15:14 AM PDT
Pine Gulch IR.mxd



Mark Grupe, IRIN
mark_grupe@nps.gov

-108°51' -108°50' -108°49' -108°48' -108°47' -108°46' -108°45' -108°44' -108°43' -108°42' -108°41' -108°40' -108°39' -108°38' -108°37' -108°36' -108°35' -108°34' -108°33' -108°32' -108°31' -108°30' -108°29' -108°28' -108°27' -108°26' -108°25' -108°24' -108°23' -108°22' -108°21' -108°20' -108°19' -108°18' -108°17' -108°16' -108°15'

39°36'
39°35'
39°34'
39°33'
39°32'
39°31'
39°30'
39°29'
39°28'
39°27'
39°26'
39°25'
39°24'
39°23'
39°22'
39°21'
39°20'
39°19'
39°18'

39°35'
39°34'
39°33'
39°32'
39°31'
39°30'
39°29'
39°28'
39°27'
39°26'
39°25'
39°24'
39°23'
39°22'
39°21'
39°20'
39°19'
39°18'