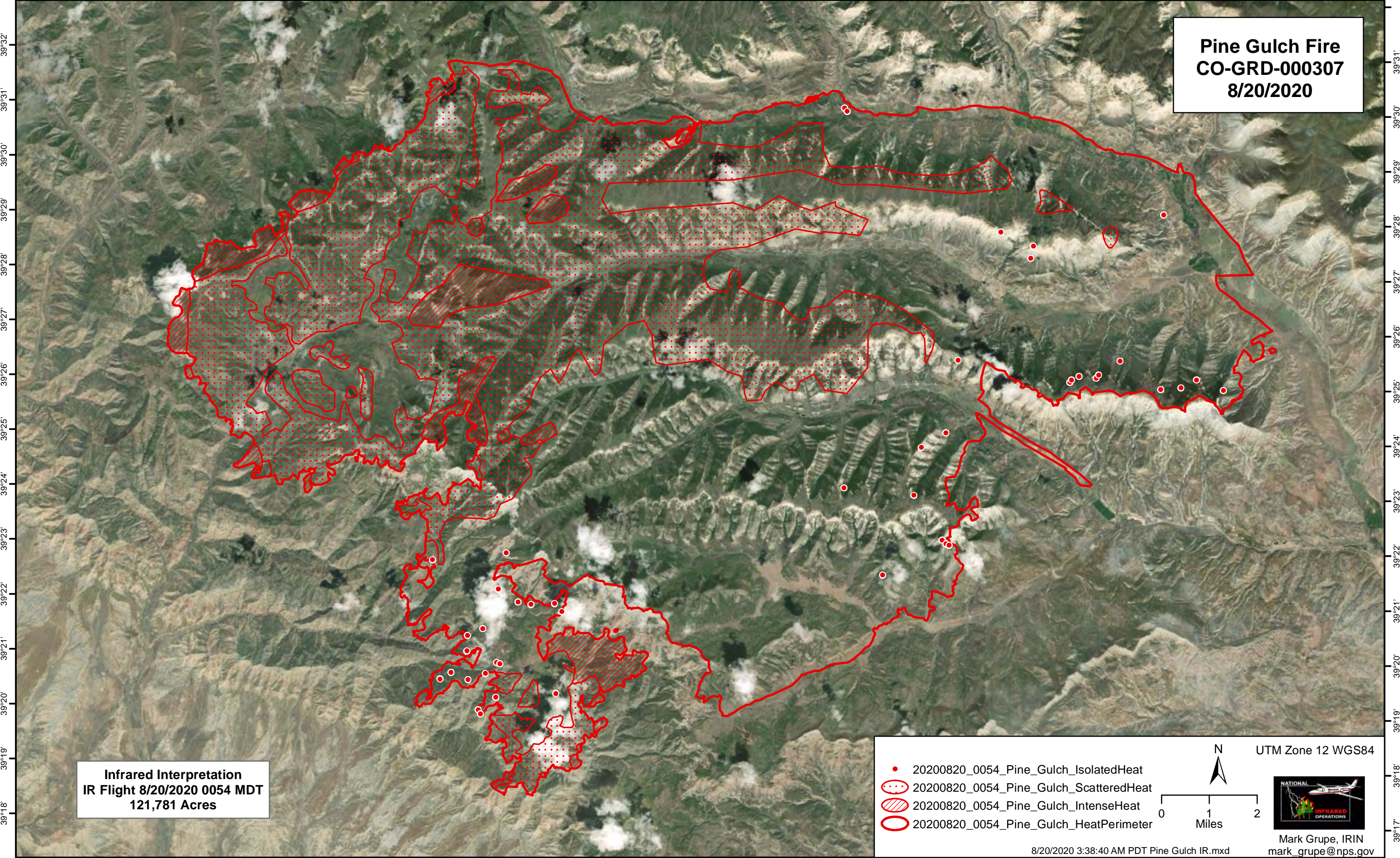


-108°47' -108°46' -108°45' -108°44' -108°43' -108°42' -108°41' -108°40' -108°39' -108°38' -108°37' -108°36' -108°35' -108°34' -108°33' -108°32' -108°31' -108°30' -108°29' -108°28' -108°27' -108°26' -108°25' -108°24' -108°23' -108°22' -108°21' -108°20' -108°19' -108°18' -108°17' -108°16' -108°15'



**Pine Gulch Fire**  
**CO-GRD-000307**  
**8/20/2020**

**Infrared Interpretation**  
**IR Flight 8/20/2020 0054 MDT**  
**121,781 Acres**


- 20200820\_0054\_Pine\_Gulch\_IsolatedHeat
- ⊙ 20200820\_0054\_Pine\_Gulch\_ScatteredHeat
- ▨ 20200820\_0054\_Pine\_Gulch\_IntenseHeat
- 20200820\_0054\_Pine\_Gulch\_HeatPerimeter

UTM Zone 12 WGS84

0 1 2 Miles

8/20/2020 3:38:40 AM PDT Pine Gulch IR.mxd

Mark Grupe, IRIN  
mark\_grupe@nps.gov



-108°47' -108°46' -108°45' -108°44' -108°43' -108°42' -108°41' -108°40' -108°39' -108°38' -108°37' -108°36' -108°35' -108°34' -108°33' -108°32' -108°31' -108°30' -108°29' -108°28' -108°27' -108°26' -108°25' -108°24' -108°23' -108°22' -108°21' -108°20' -108°19' -108°18' -108°17' -108°16' -108°15'