

108°50'0"W 108°48'0"W 108°46'0"W 108°44'0"W 108°42'0"W 108°40'0"W 108°38'0"W 108°36'0"W 108°34'0"W 108°32'0"W 108°30'0"W 108°28'0"W 108°26'0"W 108°24'0"W 108°22'0"W 108°20'0"W 108°18'0"W 108°16'0"W 108°14'0"W 108°12'0"W 108°10'0"W 108°8'0"W

39°34'0"N
39°32'0"N
39°30'0"N
39°28'0"N
39°26'0"N
39°24'0"N
39°22'0"N
39°20'0"N
39°18'0"N
39°16'0"N


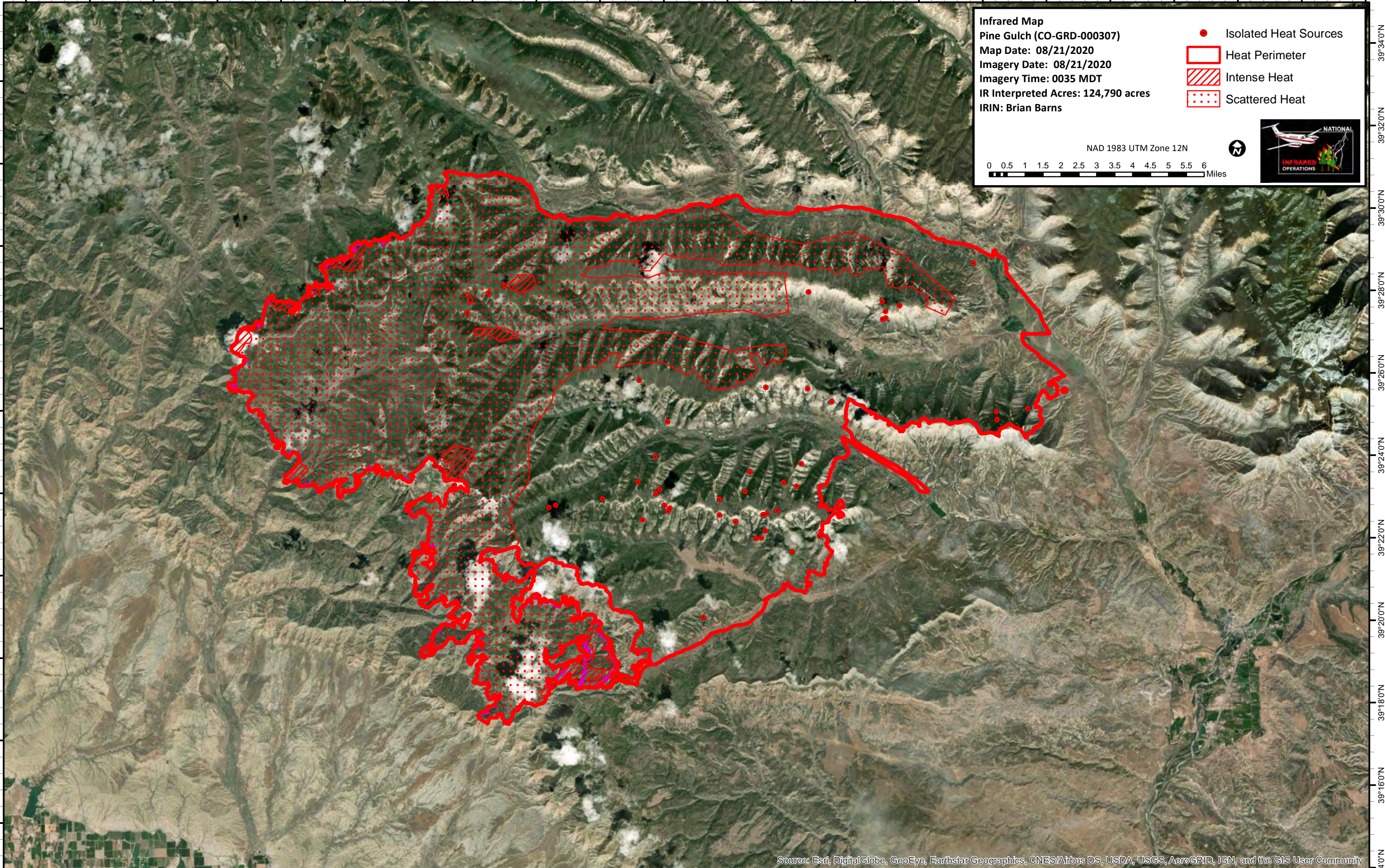
39°34'0"N
39°32'0"N
39°30'0"N
39°28'0"N
39°26'0"N
39°24'0"N
39°22'0"N
39°20'0"N
39°18'0"N
39°16'0"N

Infrared Map
Pine Gulch (CO-GRD-000307)
Map Date: 08/21/2020
Imagery Date: 08/21/2020
Imagery Time: 0035 MDT
IR Interpreted Acres: 124,790 acres
IRIN: Brian Barns

- Isolated Heat Sources
- Heat Perimeter
- Intense Heat
- Scattered Heat

NAD 1983 UTM Zone 12N

0 0.5 1 1.5 2 2.5 3 3.5 4 4.5 5 5.5 6 Miles

Source: Esri, DigitalGlobe, GeoEye, Earthstar Geographics, CNES/Airbus DS, USDA, USGS, AeroGRID, IGN, and the GIS User Community

108°50'0"W 108°48'0"W 108°46'0"W 108°44'0"W 108°42'0"W 108°40'0"W 108°38'0"W 108°36'0"W 108°34'0"W 108°32'0"W 108°30'0"W 108°28'0"W 108°26'0"W 108°24'0"W 108°22'0"W 108°20'0"W 108°18'0"W 108°16'0"W 108°14'0"W 108°12'0"W 108°10'0"W 108°8'0"W