

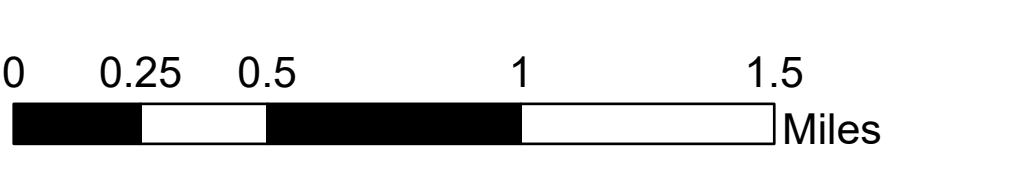
# Operations

## Richard Mountain

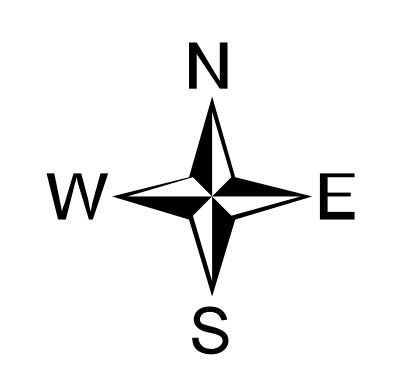
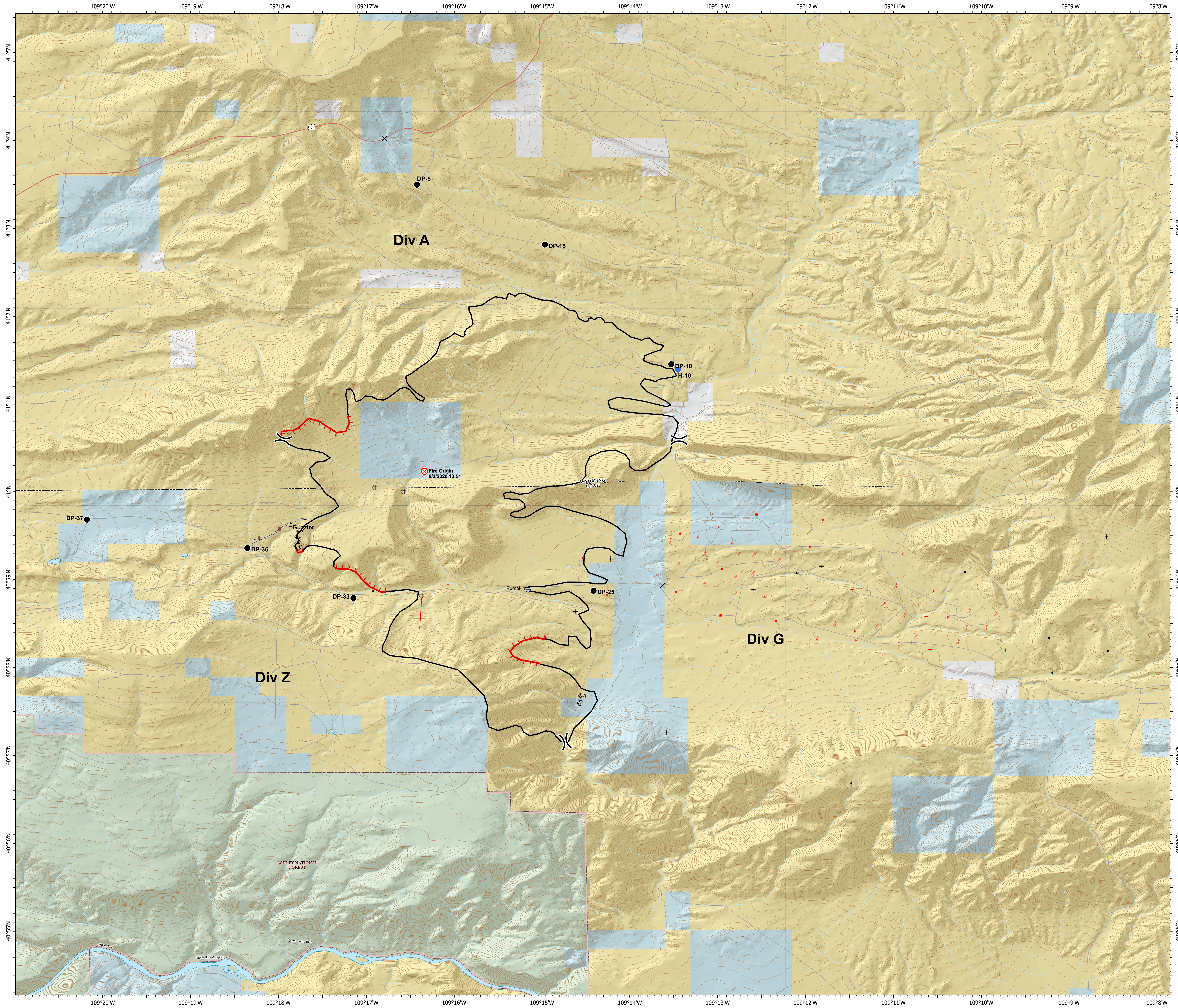
### WYRSD-200480

#### 8/8/2020 Day

7,632 acres at 8/7/2020 1011 hrs



- ✕ Closure
- Drop Point
- Dozer Push
- ⊗ Fence - Cut/Damaged
- ⊗ Fire Origin
- Hellsport
- ⊕ Water Development or Draft Site
- ⚡ Value at Risk
- ⌋ Division Break
- Uncontrolled Fire Edge
- Contained Line
- ⋯ Completed Dozer Line
- Access or Improved Road
- Fence
- Bureau of Land Management (BLM)
- State
- US Forest Service (USFS)
- Private
- Undetermined
- ⚡ Gas Storage Well
- ⚡ Plugged and Abandoned
- ⚡ Producing Gas Well
- ⚡ Shut-in Gas Well



cmm  
8/8/2020 2124  
WGS 1984 Datum, Lat/Long Grid