

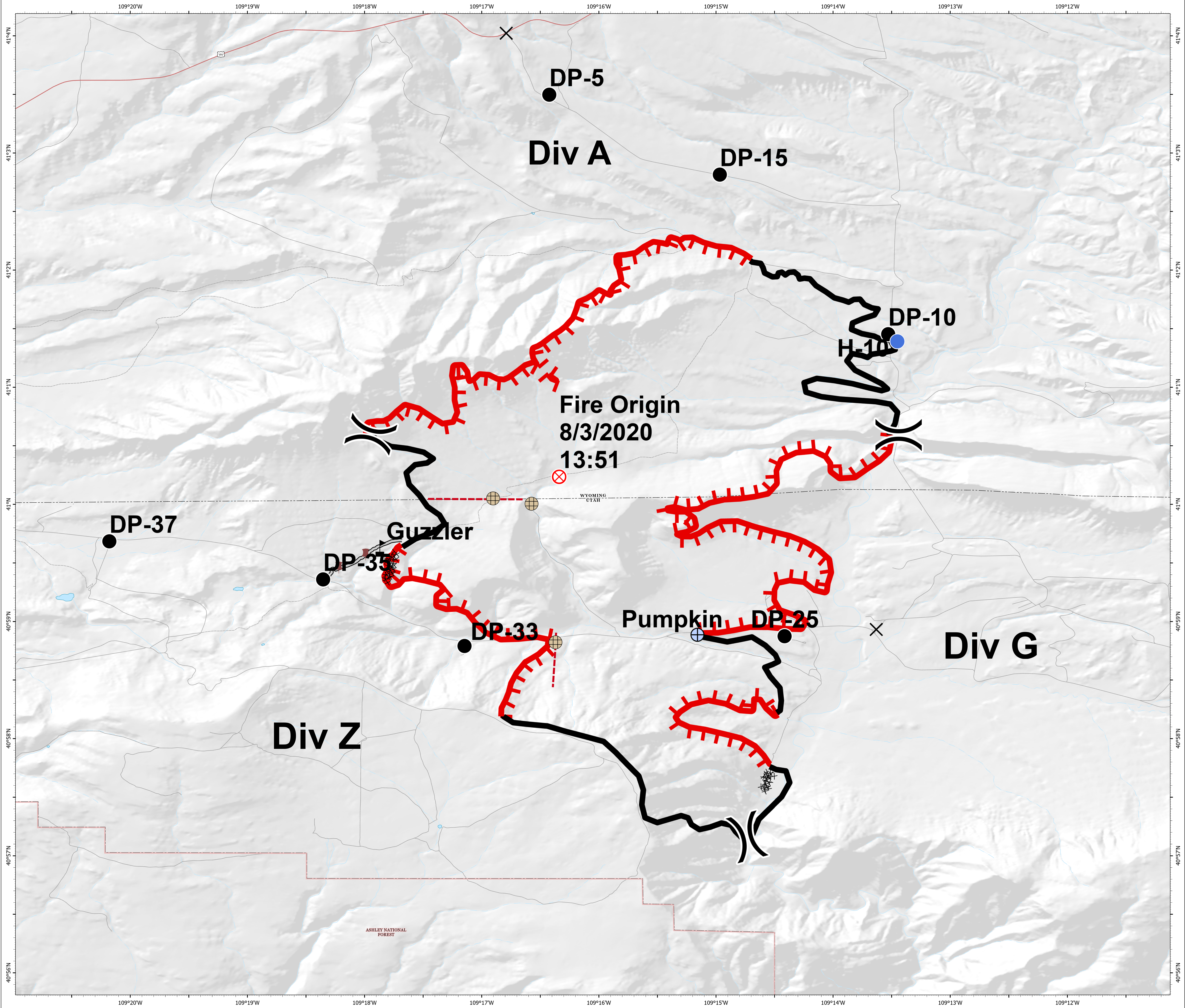
Briefing

Richard Mountain
WYRSD-200480
8/8/2020 Day

7,632 acres at 8/7/2020 1011 hrs



- Fence - Cut/Damaged
- Dozer Push
- Water Development or Draft Site
- Closure
- Drop Point
- Fire Origin
- Helispot
- Value at Risk
- Division Break
- Uncontrolled Fire Edge
- Access or Improved Road
- Fence
- Contained Line
- Completed Dozer Line



cmm
8/7/2020 1934
WGS 1984 Datum, Lat/Long Grid