

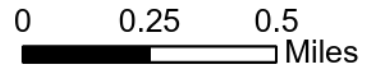
IAP Map

Richard Mountain

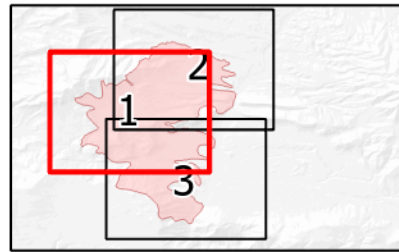
WYRSD-200480

8/8/2020 Day

7,632 acres at 8/7/2020 1011 hrs
Page 1 of 3

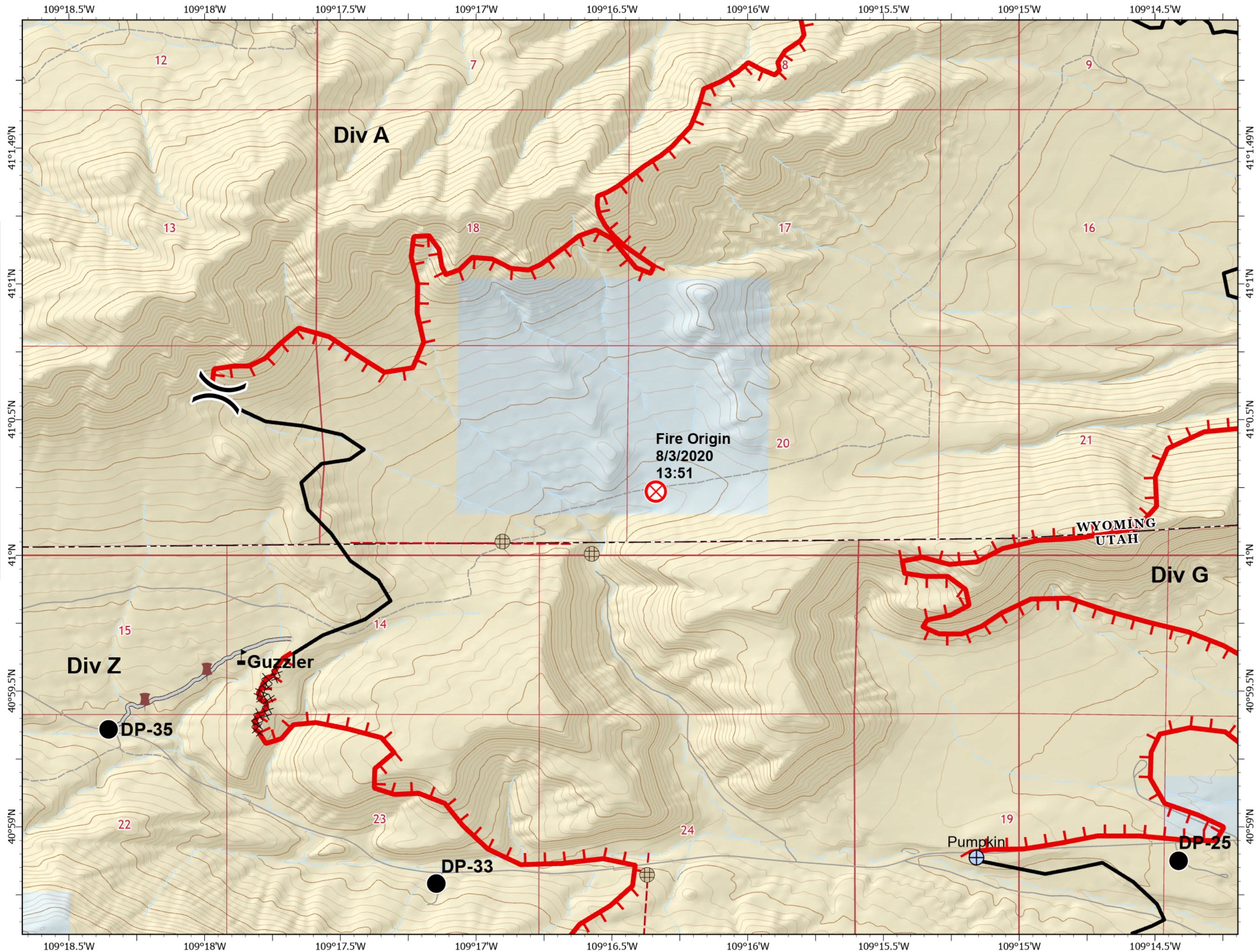


- Drop Point
- Dozer Push
- Fence - Cut/Damaged
- Fire Origin
- Water Development or Draft Site
- Value at Risk
- Division Break
- Uncontrolled Fire Edge
- Contained Line
- Completed Dozer Line
- Access or Improved Road
- Fence
- Bureau of Land Management (BLM)
- State
- Undetermined



8/7/2020 1932

WGS 1984 Datum. LatLong Grid



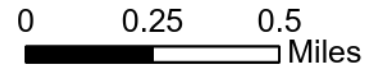
IAP Map

Richard Mountain

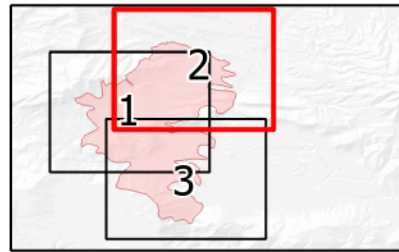
WYRSD-200480

8/8/2020 Day

7,632 acres at 8/7/2020 1011 hrs
Page 2 of 3

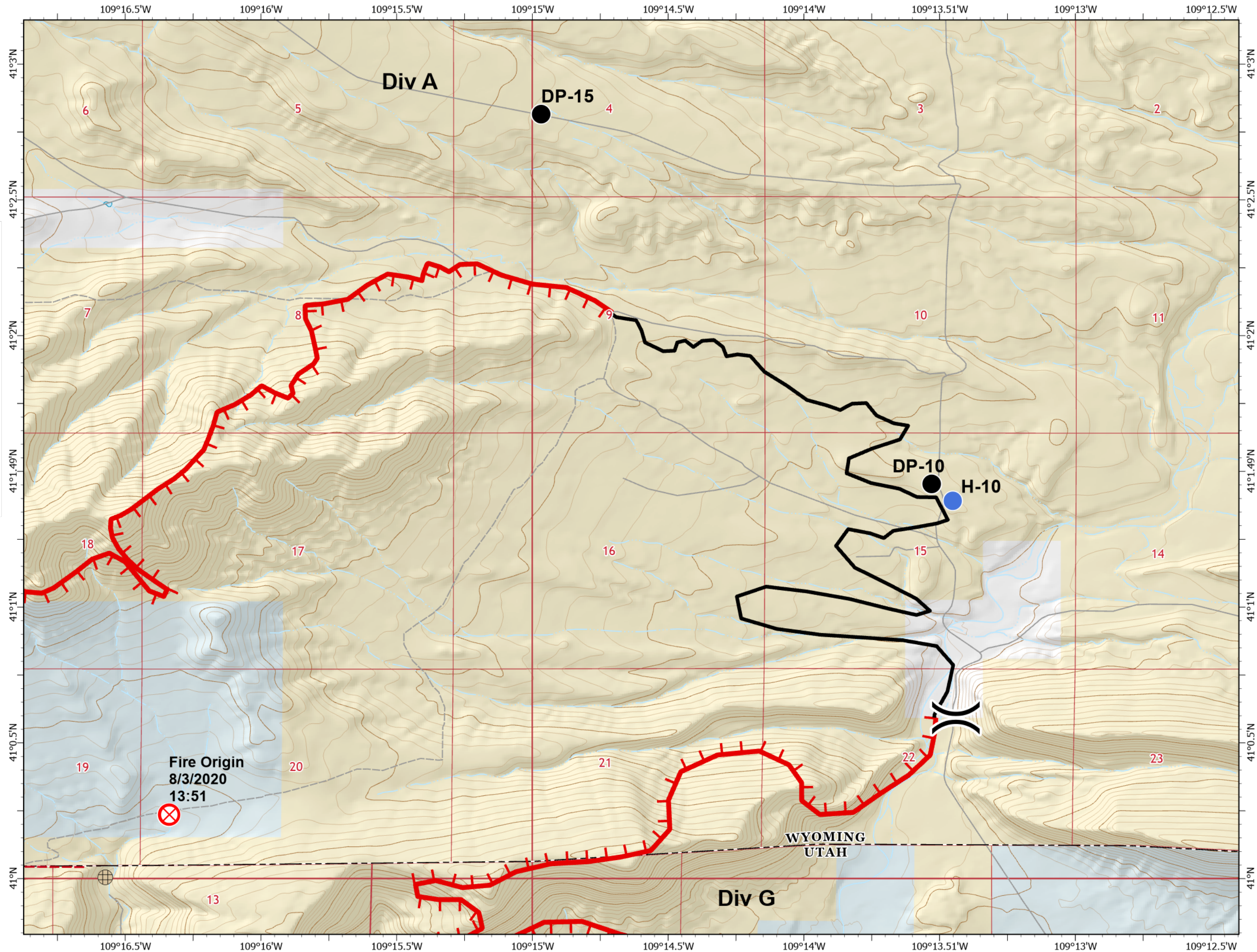


- Drop Point
- ⊗ Fence - Cut/Damaged
- ⊗ Fire Origin
- Helispot
- ⌋ Division Break
- Uncontrolled Fire Edge
- Contained Line
- - - Fence
- Bureau of Land Management (BLM)
- State
- Private
- Undetermined



8/7/2020 1932

WGS 1984 Datum. LatLong Grid



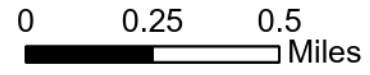
IAP Map

Richard Mountain

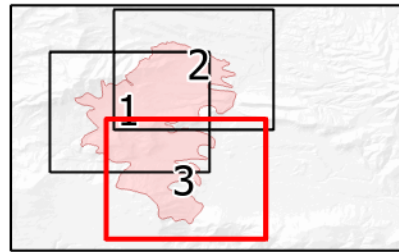
WYRSD-200480

8/8/2020 Day

7,632 acres at 8/7/2020 1011 hrs
Page 3 of 3



- Closure
- Drop Point
- Fence - Cut/Damaged
- Water Development or Draft Site
- Division Break
- Uncontrolled Fire Edge
- Contained Line
- Completed Dozer Line
- Fence
- Bureau of Land Management (BLM)
- State
- US Forest Service (USFS)
- Undetermined



8/7/2020 1932

WGS 1984 Datum. LatLong Grid

