

107°25'W 107°24'W 107°23'W 107°22'W 107°21'W 107°20'W 107°19'W 107°18'W 107°17'W 107°16'W 107°15'W 107°14'W 107°13'W 107°12'W 107°11'W 107°10'W 107°9'W

**IAP Map**  
Sand Creek  
CO-SJF-000436 ID  
June 30, 2020

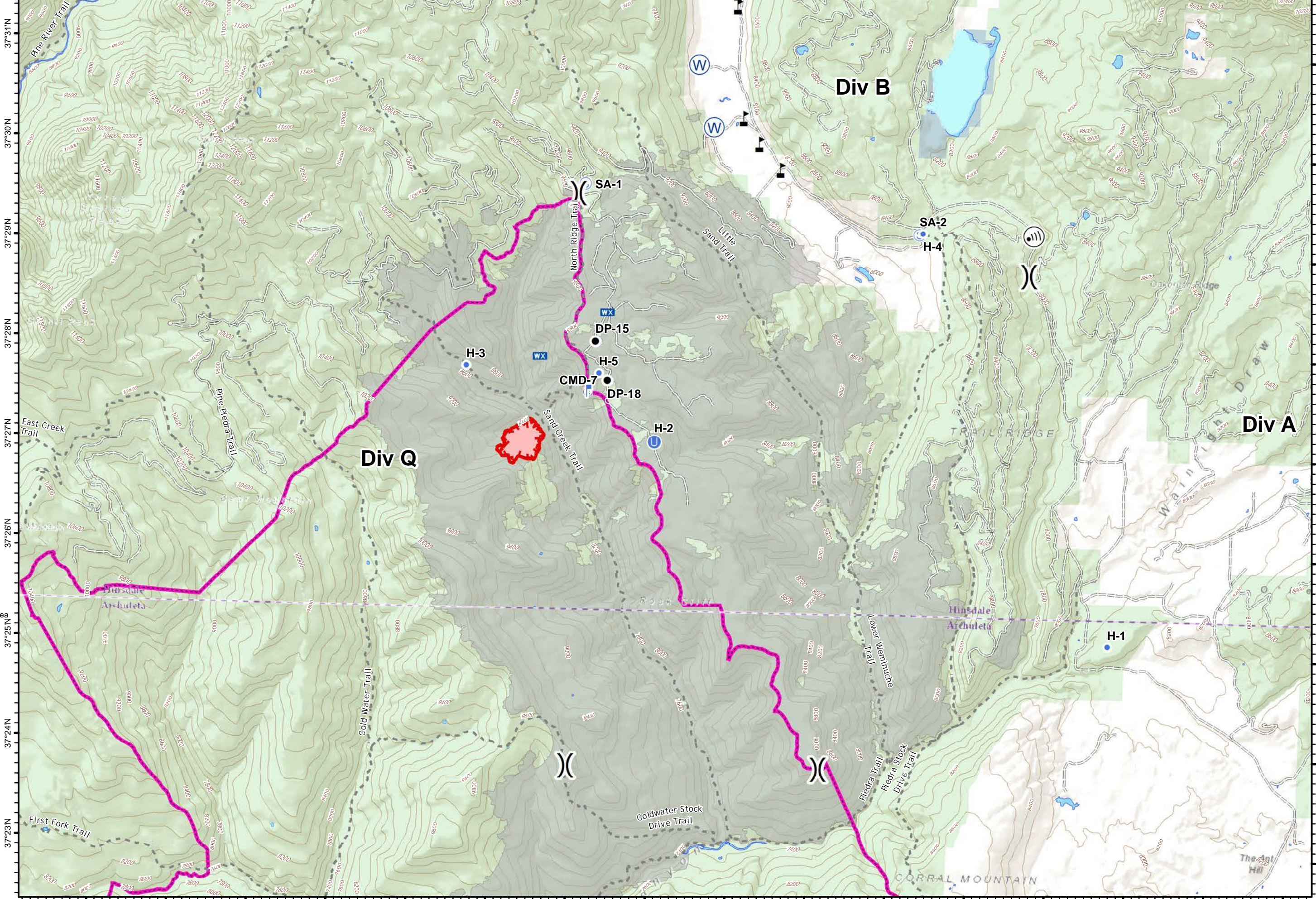
Appx 88 ac  
6/29/20 MMA Flight



- Drop Point
- U Unimproved Landing Area
- Helispot
- Ⓜ Internet Access
- Ⓜ Lookout
- WX Mobile Weather Unit
- Ⓜ Repeater
- Ⓜ Staging Area
- W Water Source
- ⚠ Value at Risk
- ) Division Break
- FF Uncontrolled Fire Edge
- Wildfire Daily Fire Perimeter
- Local or 4WD road
- Trail
- Piedra Special Management Area (SMA)
- 2012 Little Sand Fire Area
- Private
- State, County, City; Areas
- US Forest Service



S. McCormick  
6/29/2020  
1440 hrs  
Acres from MMA and field reports



37°31'N 37°30'N 37°29'N 37°28'N 37°27'N 37°26'N 37°25'N 37°24'N 37°23'N

107°24'W 107°23'W 107°22'W 107°21'W 107°20'W 107°19'W 107°18'W 107°17'W 107°16'W 107°15'W 107°14'W 107°13'W 107°12'W 107°11'W 107°10'W 107°9'W