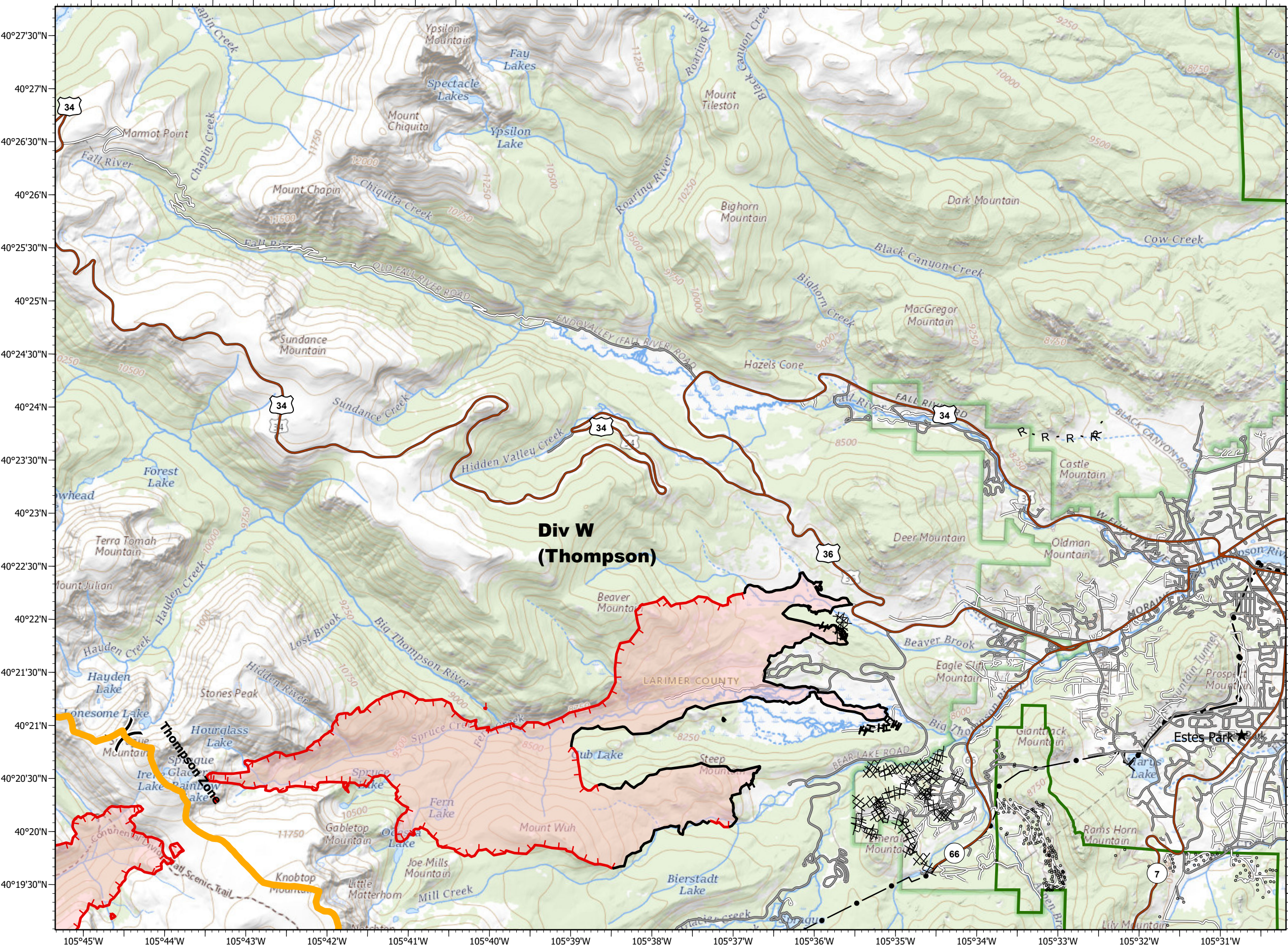


Division Break
 Uncontrolled Fire Edge
 Contained Line
 Completed Dozer Line
 Completed Hand Line
 Road as Completed Line
 Fire Perimeter
Forest Powerline Data
 PubServCo_CLC411113
 MtnPrksElectricInc
Utilities
 Power Lines
 Gas Line
 Res. Structures
 Structures Centroids
 Structure Footprints
 Zone Break

Fire Perimeter as of 11/04/20 1850 hrs
 193,812 Total Acres
 188,915 Grand Zone
 4,897 Thompson Zone

RM Type 3
Team
 0 0.7 1.4
 Miles

A1	A2 Div K/C	A3	A4
B1	B2	B3	B4
C1	C2	C3 Div Z/A	C4
D1 Div M/R	D2	D3	



Div W
(Thompson)

LARIMER COUNTY

Estes Park