

- Drop Point
- Helispot
- Ⓡ Repeater
- ▲ Safety Zone
-) (Division Break
- Contained Line
- ⊗ Completed Dozer Line
- H Completed Hand Line
- R Road as Completed Line
- Fire Perimeter

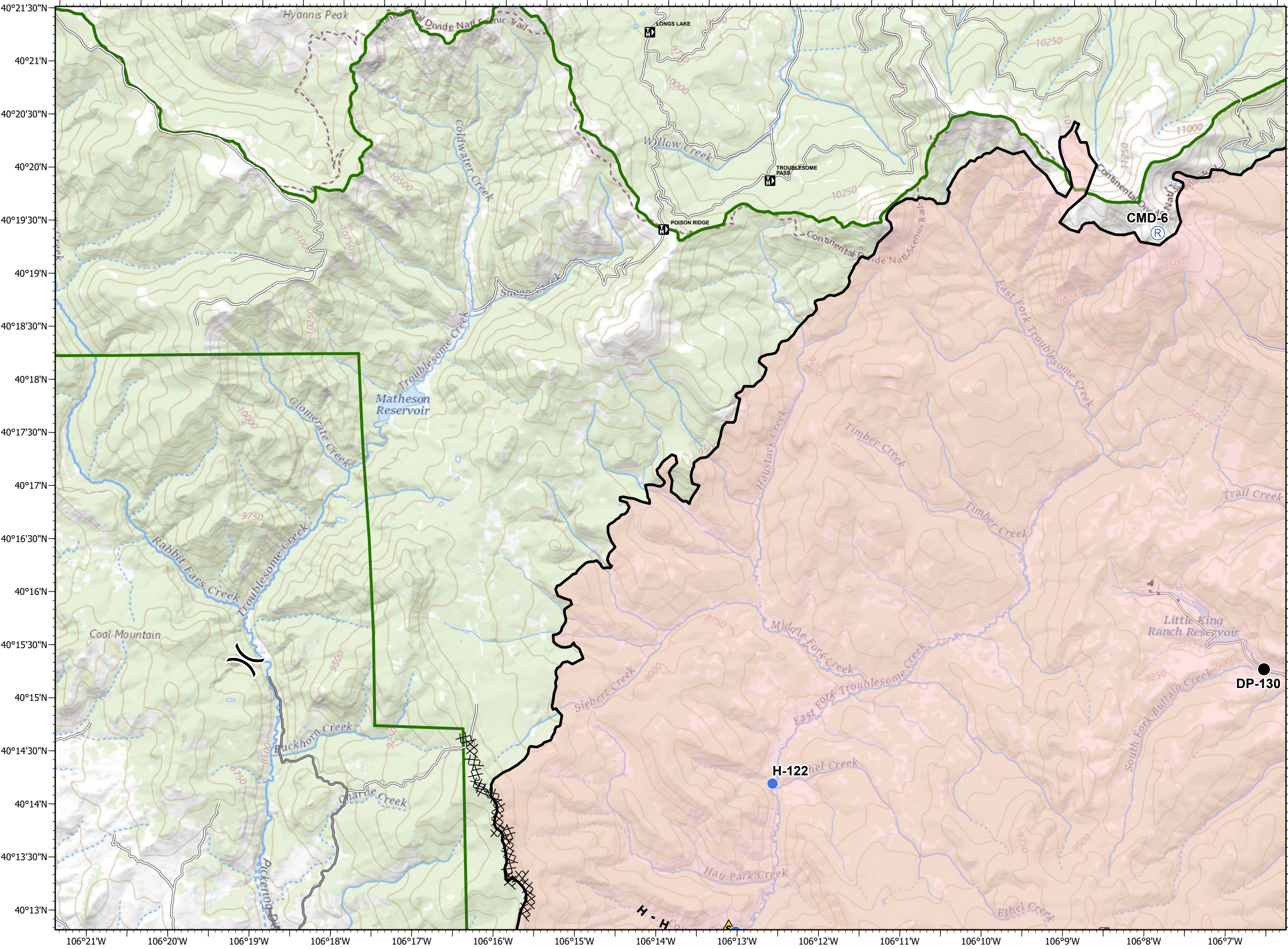
- Forest Powerline Data**
- PubServCo_CLC411113
 - MtnPrksElectricInc

- Utilities**
- Power Lines
 - ⊕ Gas Line
 - Res. Structures
 - Structures Centroids
 - Structure Footprints
 - Zone Break

Fire Perimeter as of 11/04/20 1850 hrs
 193,812 Total Acres
 188,915 Grand Zone
 4,897 Thompson Zone

RM Type 3 Team

A1	A2 Div K/C	A3	A4
B1	B2	B3 Div W (Thompson)	B4
C1	C2	C3 Div Z/A	C4
D1 Div M/R	D2	D3	



40°21'30"N
40°21'N
40°20'30"N
40°20'N
40°19'30"N
40°19'N
40°18'30"N
40°18'N
40°17'30"N
40°17'N
40°16'30"N
40°16'N
40°15'30"N
40°15'N
40°14'30"N
40°14'N
40°13'30"N
40°13'N

106°21'W 106°20'W 106°19'W 106°18'W 106°17'W 106°16'W 106°15'W 106°14'W 106°13'W 106°12'W 106°11'W 106°10'W 106°9'W 106°8'W 106°7'W