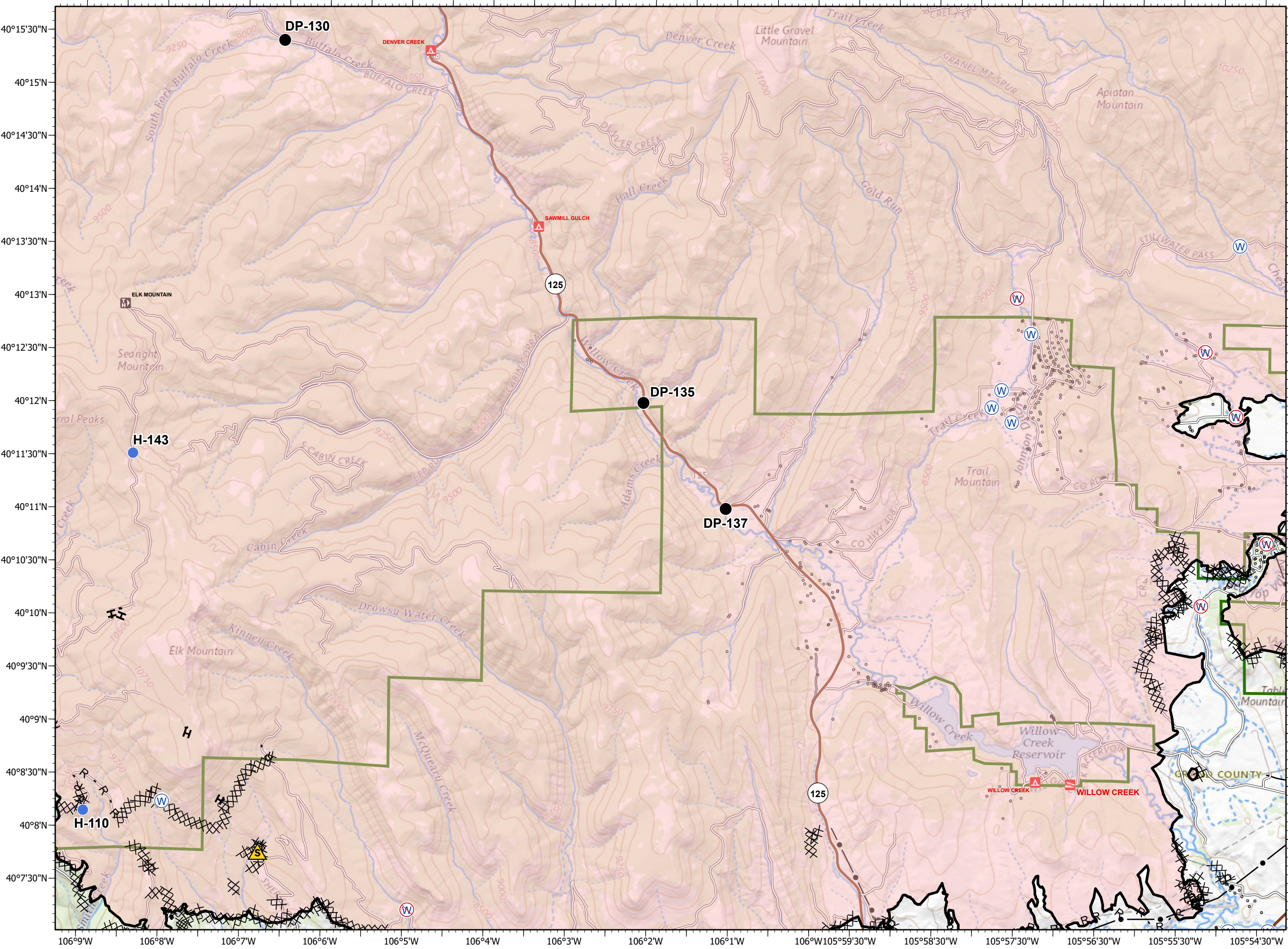


- Drop Point
 - Helispot
 - ▲ Safety Zone
 - ⊕ Water Source
 - ⊖ Restricted Water Source
 - Contained Line
 - ⊗ Completed Dozer Line
 - H Completed Hand Line
 - R Road as Completed Line
 - Fire Perimeter
- Forest Powerline Data**
- PubServCo_CLC411113
 - MtnPrksElectricInc
- Utilities**
- Power Lines
 - ⊕ Gas Line
 - Res. Structures
 - Structures Centroids
 - Structure Footprints
 - ▬ Zone Break

Fire Perimeter as of 11/04/20 1850 hrs
 193,812 Total Acres
 188,915 Grand Zone
 4,897 Thompson Zone

RM Type 3 Team

A1	A2 Div K/C	A3	A4 Div W (Thompson)
B1	B2	B3 Div Z/A	B4
C1	C2	C3	C4
D1 Div M/R	D2	D3	



106°9'W 106°8'W 106°7'W 106°6'W 106°5'W 106°4'W 106°3'W 106°2'W 106°1'W 105°59'30"W 105°58'30"W 105°57'30"W 105°56'30"W 105°55'30"W 105°54'30"W