

# Briefing

Williams Fork  
CO-ARF-000641  
8/17/20 Day

5,693 acres at 8/16/20 0147



Uncontrolled Fire Edge  
Wildfire Daily Fire Perimeter

Sheep Mountain  
10,669▲

Ptarmigan Peak  
11,775

Bottle Pass  
11,319

Bottle Peak  
11,585

Bills Peak  
12,697▲

Byers Peak  
12,798

Prairie Mountain  
10,663

Ute Pass  
9,570

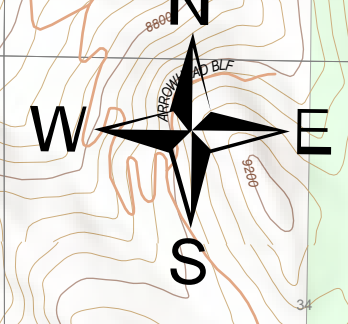
Ute Peak  
12,273

Sugarloaf  
9,944

Saint Louis Pass  
11,542

Saint Louis Peak  
12,257

▲ Old Baldy  
11,840



Author Name  
8/16/2020 1843  
Acres from IR  
North American 1983 Datum, Lat/Long

Source: Esri, Airphoto, USGS, NOAA, NGA, CEAC, IR, Borealis, NCLAS, NAL, US, NOAA, Geodanet, Garmin, GeoEye, FEMA, Intermap, and the GIS user community.