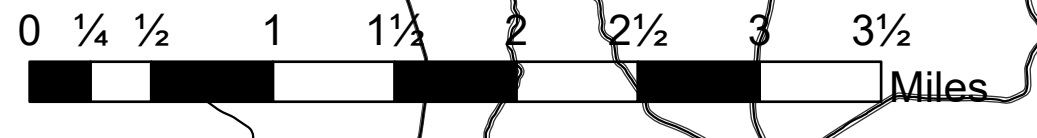


Medical Evacuation

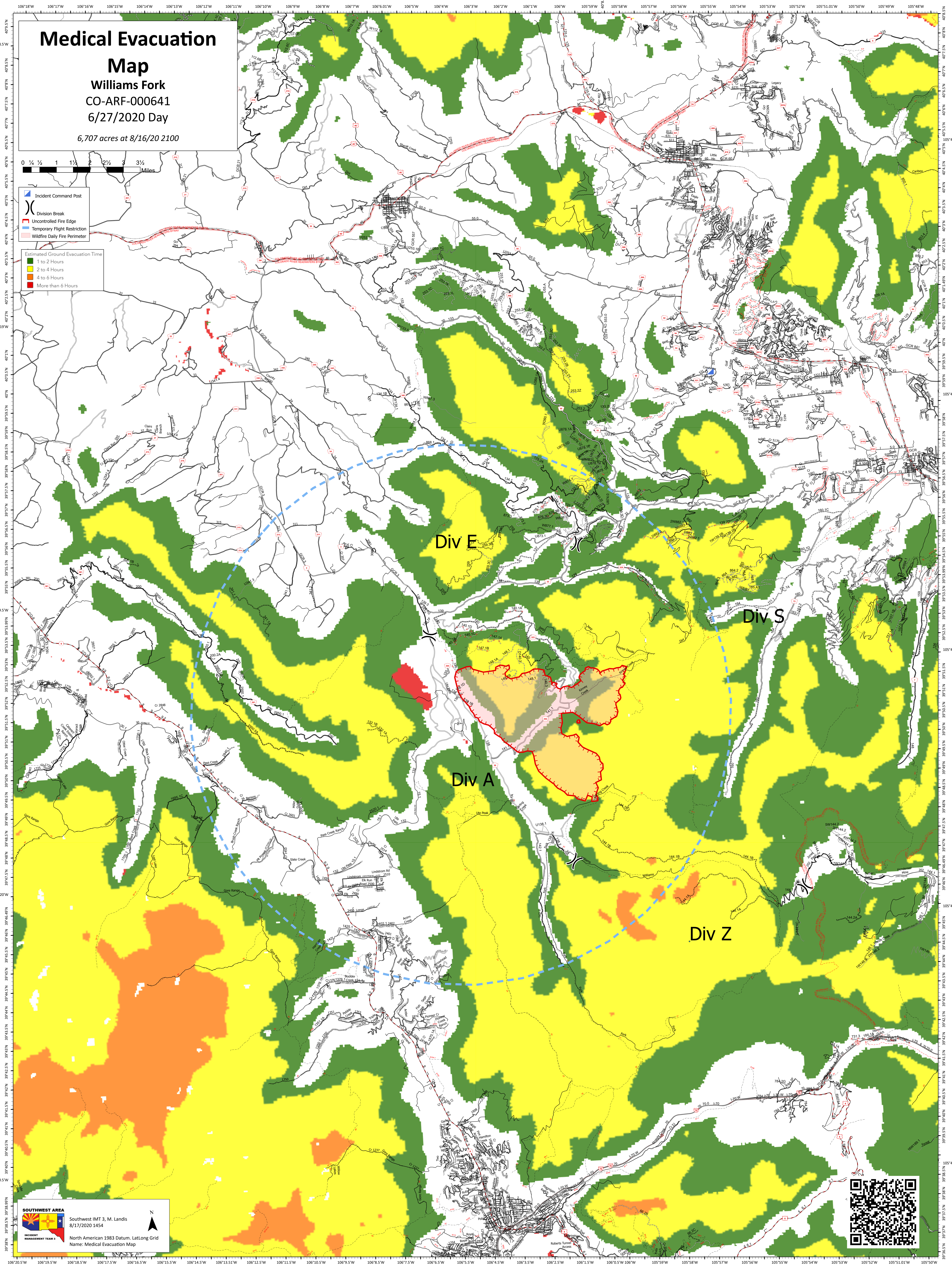
Map

Williams Fork
CO-ARF-000641
6/27/2020 Day

6,707 acres at 8/16/20 2100



- Incident Command Post
 - Division Break
 - Uncontrolled Fire Edge
 - Temporary Flight Restriction
 - Wildfire Daily Fire Perimeter
- Estimated Ground Evacuation Time
- 1 to 2 Hours
 - 2 to 4 Hours
 - 4 to 6 Hours
 - More than 6 Hours



SOUTHWEST AREA
Southwest IMT 3, M. Landis
8/17/2020 1454

North American 1983 Datum, Lat/Long Grid
Name: Medical Evacuation Map

