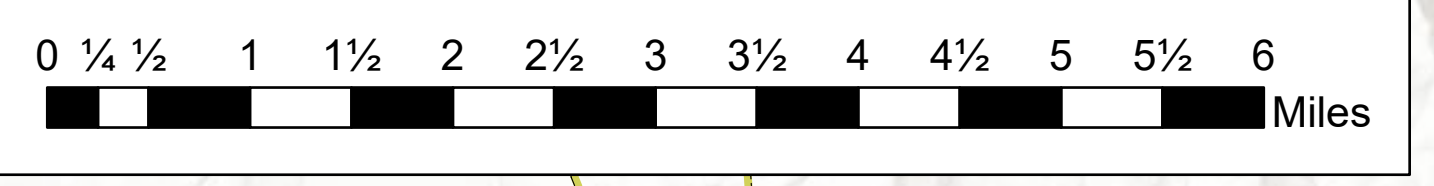
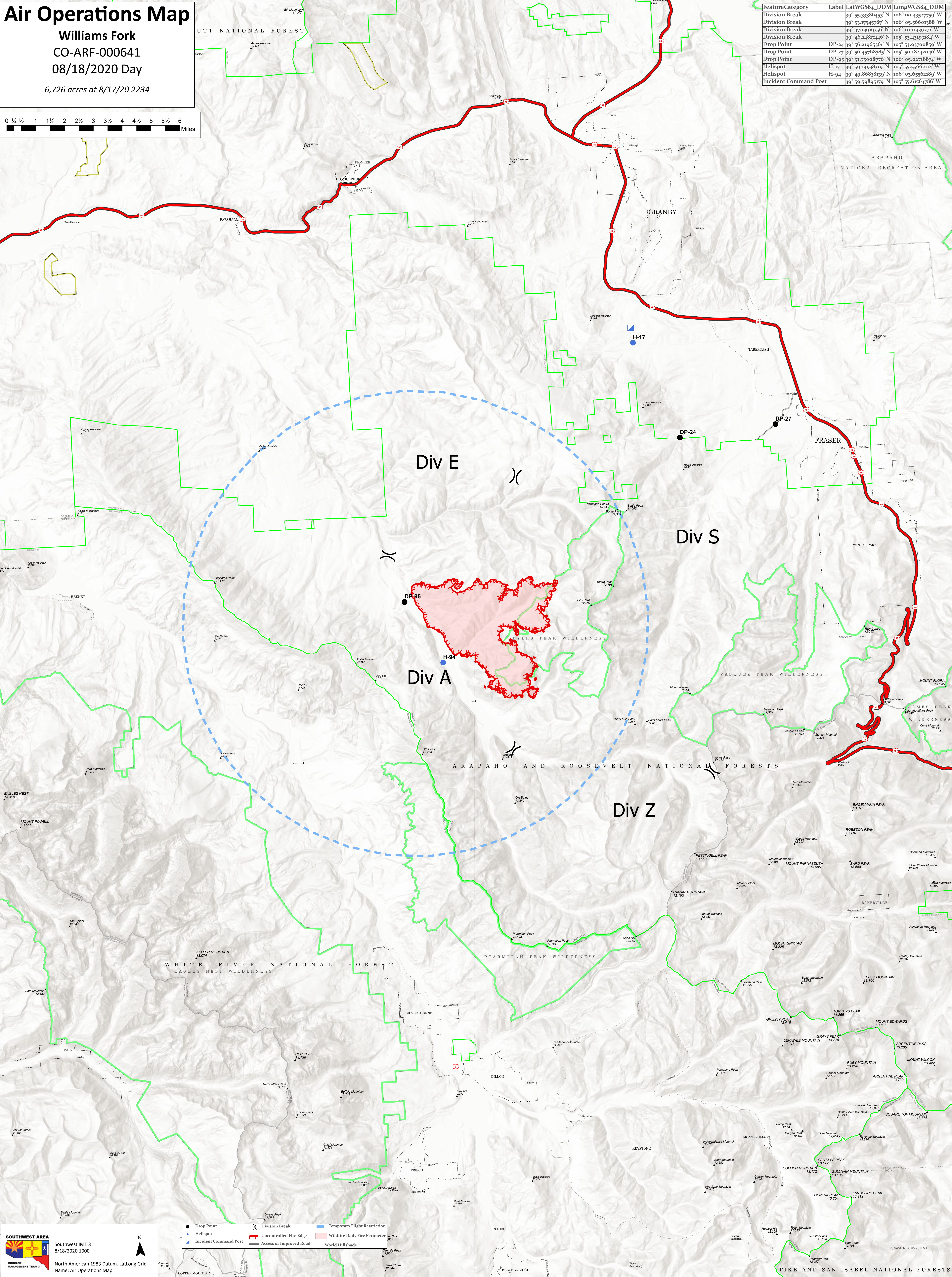


# Air Operations Map

**Williams Fork**  
**CO-ARF-000641**  
**08/18/2020 Day**  
 6,726 acres at 8/17/20 2234



FeatureCategory	Label	LatWGS84_DDM	LongWGS84_DDM
Division Break		39° 55.33386453 N	106° 00.43527759 W
Division Break		39° 53.17545787 N	106° 05.56601388 W
Division Break		39° 47.13919356 N	106° 01.11339771 W
Division Break		39° 46.14817446 N	105° 53.43191814 W
Drop Point	DP-24	39° 56.21965361 N	105° 53.9700859 W
Drop Point	DP-27	39° 56.45768785 N	105° 50.18242046 W
Drop Point	DP-95	39° 51.75008776 N	106° 05.02718874 W
Helispot	H-17	39° 59.14938319 N	105° 55.55662114 W
Helispot	H-94	39° 49.86838139 N	106° 03.65621819 W
Incident Command Post		39° 59.59895179 N	105° 55.6164786 W



**SOUTHWEST AREA**  
 Southwest IMT 3  
 8/18/2020 1000  
 Incident Management Team 3  
 North American 1983 Datum, Latlong Grid  
 Name: Air Operations Map

- Drop Point
- Helispot
- Incident Command Post
- Division Break
- Uncontrolled Fire Edge
- Access or Improved Road
- Temporary Flight Restriction
- Wildfire Daily Fire Perimeter
- World Hillshade

106°22'W 106°20.5'W 106°19'W 106°18'W 106°17'W 106°16'W 106°15'W 106°14'W 106°13'W 106°12'W 106°11'W 106°10'W 106°9'W 106°8'W 106°7'W 106°6.01'W 106°5'W 106°4'W 106°3'W 106°2'W 106°1'W 106°W 105°59'W 105°58'W 105°57'W 105°56'W 105°55'W 105°54'W 105°53'W 105°52'W 105°50.5'W 105°49'W 105°48'W 105°47'W 105°46'W