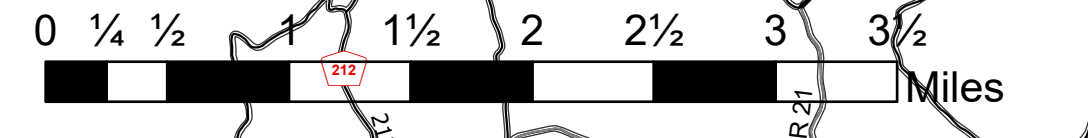


# Medical Evacuation

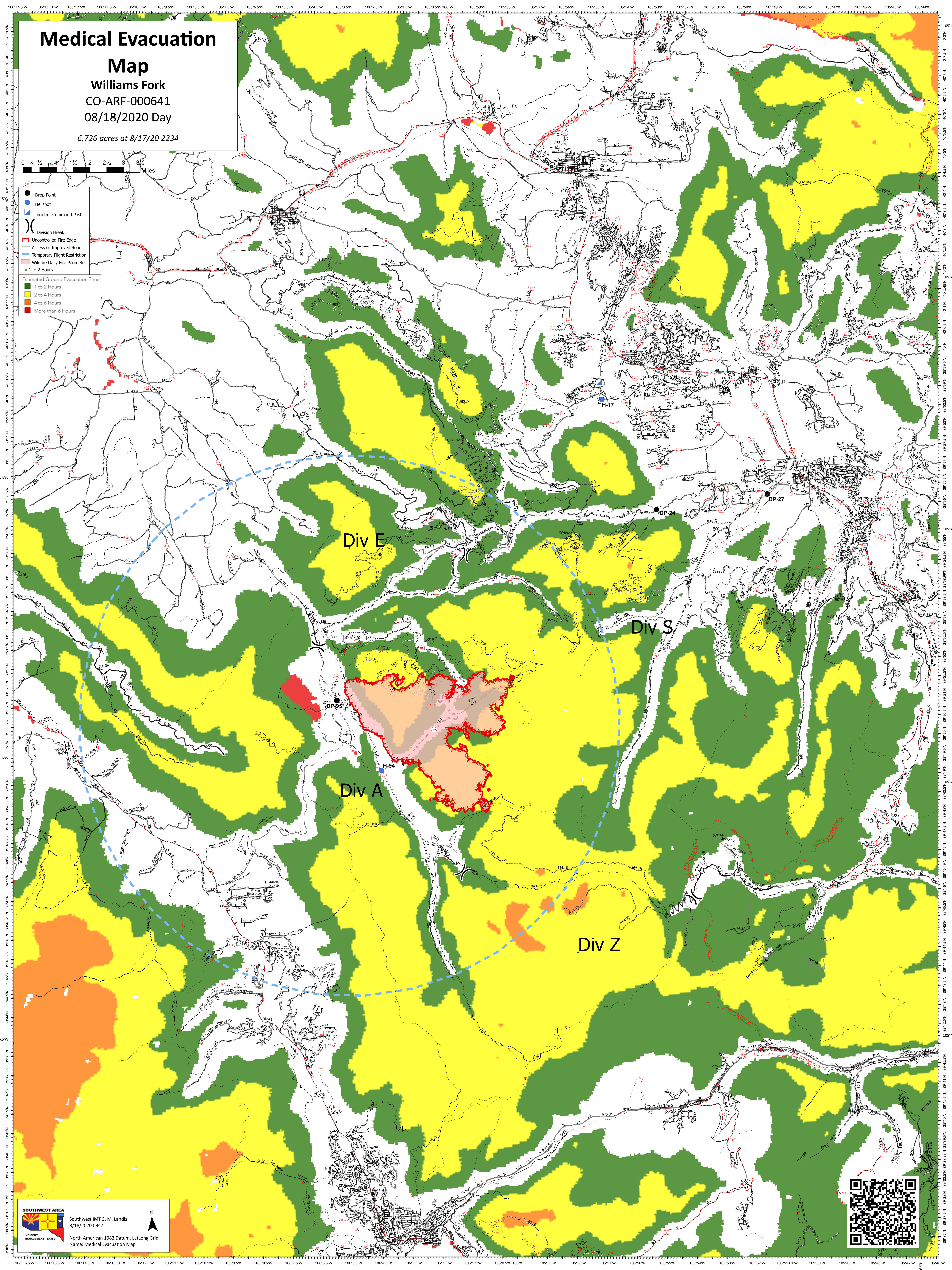
## Map

Williams Fork  
CO-ARF-000641  
08/18/2020 Day

6,726 acres at 8/17/20 2234



- Drop Point
- Helispot
- ⊕ Incident Command Post
- ⊗ Division Break
- Uncontrolled Fire Edge
- Access or Improved Road
- Temporary Flight Restriction
- Wildfire Daily Fire Perimeter
- 1 to 2 Hours
- Estimated Ground Evacuation Time
- 1 to 2 Hours
- 2 to 4 Hours
- 4 to 6 Hours
- More than 6 Hours



**SOUTHWEST AREA**  
Southwest IMT 3, M. Landis  
8/18/2020 0947  
North American 1983 Datum, Lat/Long Grid  
Name: Medical Evacuation Map

