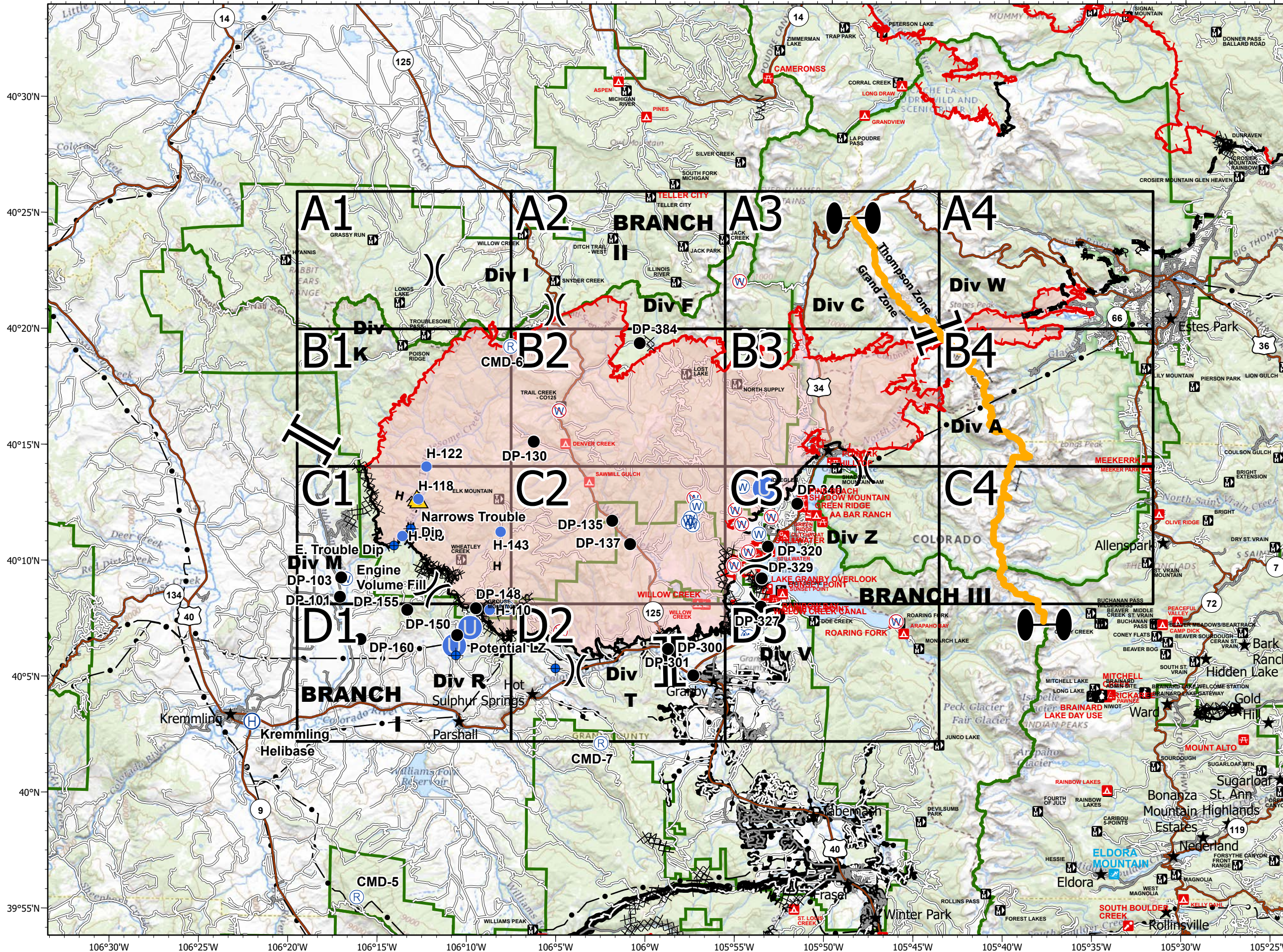


# EAST TROUBLESOME CREEK - GRAND ZONE WY-MRF-000408

Fire Perimeter as of 10/27/20 1354 hrs  
193,774 Total Acres  
188,910 Grand Zone  
4,864 Thompson Zone



**Legend**

- Dip Site
- Drop Point
- Helibase
- Unimproved Landing Area
- Helispot
- Repeater
- Safety Zone
- Water Source
- Restricted Water Source
- Zone Break
- Division Break
- Branch Break
- Uncontrolled Fire Edge
- Contained Line
- Completed Dozer Line
- Completed Hand Line
- R Road as Hand Line
- Fire Break Planned or Incomplete
- Planned Fire Line
- Fire Perimeter

**SITE\_TYPE**

- INFO SITE/FEE STATION
- CAMPGROUND
- GROUP CAMPGROUND
- TRAILHEAD
- PICNIC SITE
- GROUP PICNIC SITE
- BOATING SITE
- INTERPRETIVE SITE; INTERPRETIVE SITE (ADMIN)
- SKI AREA ALPINE

**Forest Powerline Data**

- PubServCo\_CLC411113
- MtnPrksElectricInc

**Utilities**

- Power Lines
- Gas Line
- Zone Break

0 3 6 Miles

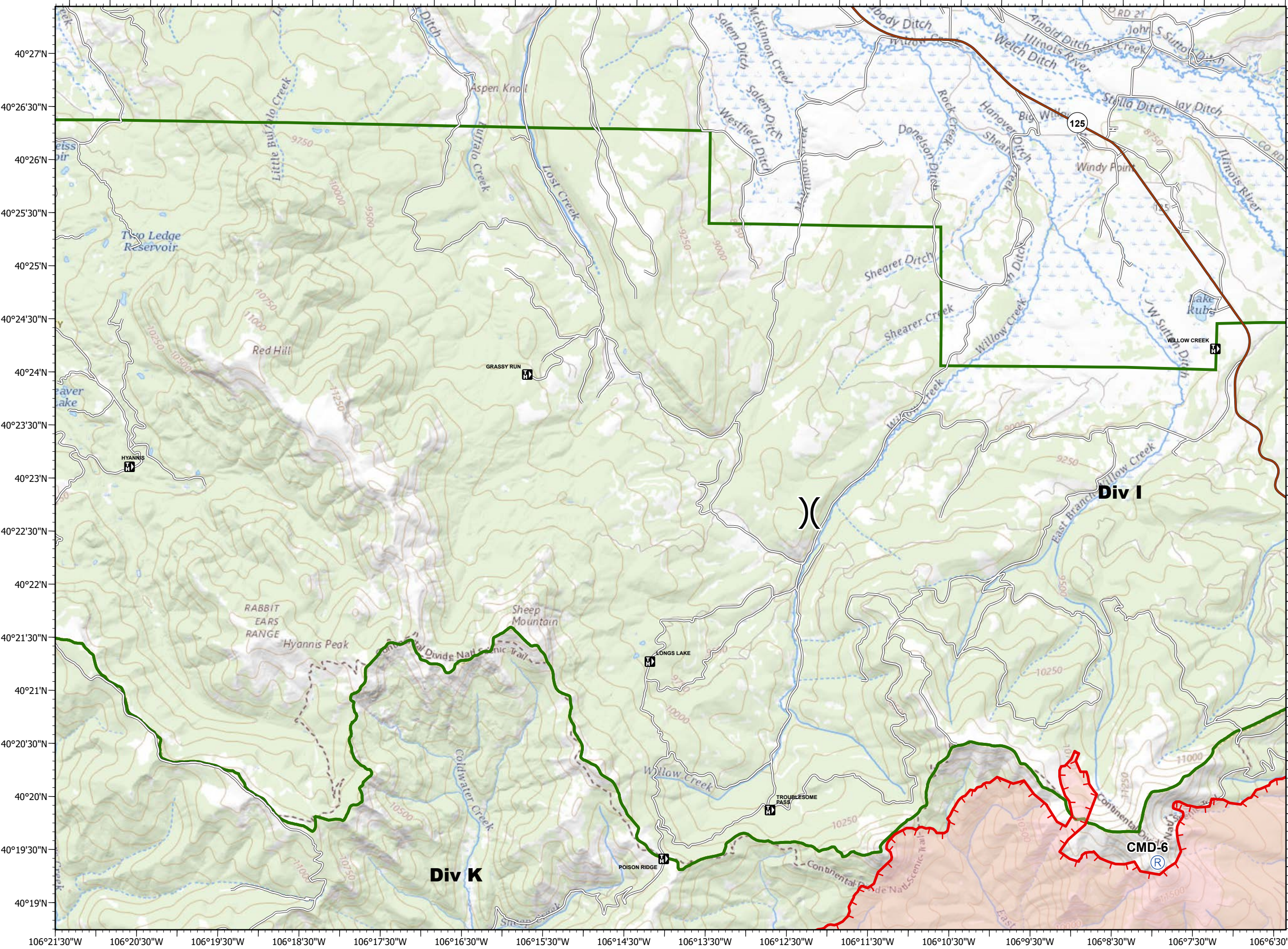
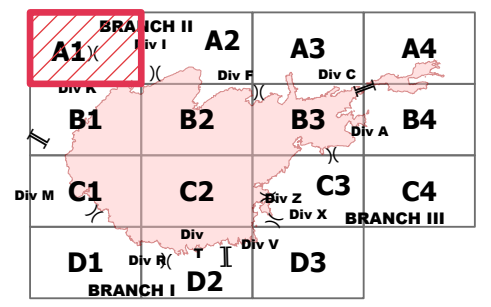
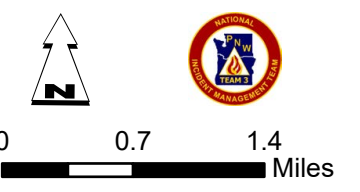


- Repeater
- Division Break
- Uncontrolled Fire Edge
- Fire Perimeter

- Forest Powerline Data**
- PubServCo\_CLC411113
  - MtnPrksElectricInc

- Utilities**
- Power Lines
  - Gas Line
  - Res. Structures
  - Structures Centroids
  - Structure Footprints
  - Zone Break

Fire Perimeter as of 10/27/20 1354 hrs  
 193,774 Total Acres  
 188,910 Grand Zone  
 4,864 Thompson Zone

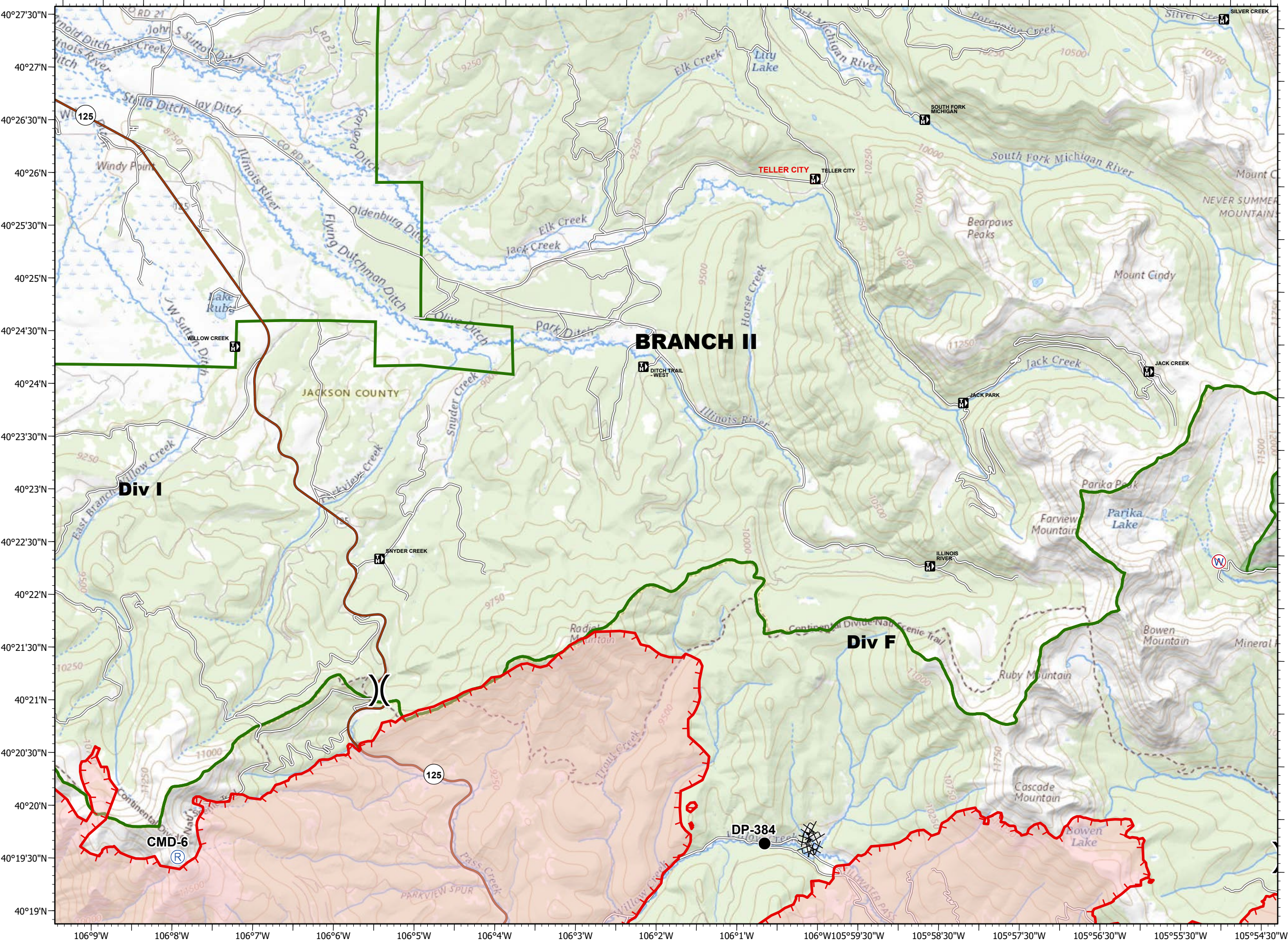
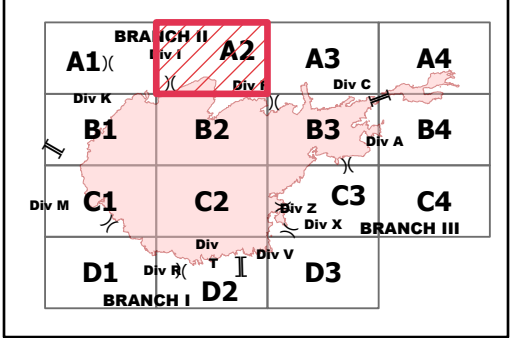
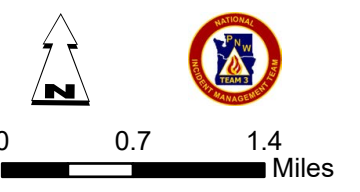


106°21'30"W 106°20'30"W 106°19'30"W 106°18'30"W 106°17'30"W 106°16'30"W 106°15'30"W 106°14'30"W 106°13'30"W 106°12'30"W 106°11'30"W 106°10'30"W 106°9'30"W 106°8'30"W 106°7'30"W 106°6'30"W



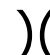





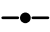







- Drop Point
  - Ⓡ Repeater
  - Ⓡ Restricted Water Source
  - ) ( Division Break
  - Uncontrolled Fire Edge
  - XXXX Completed Dozer Line
  - Fire Perimeter
- Forest Powerline Data**
- PubServCo\_CLC411113
  - MtnPrksElectricInc
- Utilities**
- Power Lines
  - ⊕ Gas Line
  - Res. Structures
  - Structures Centroids
  - Structure Footprints
  - Zone Break

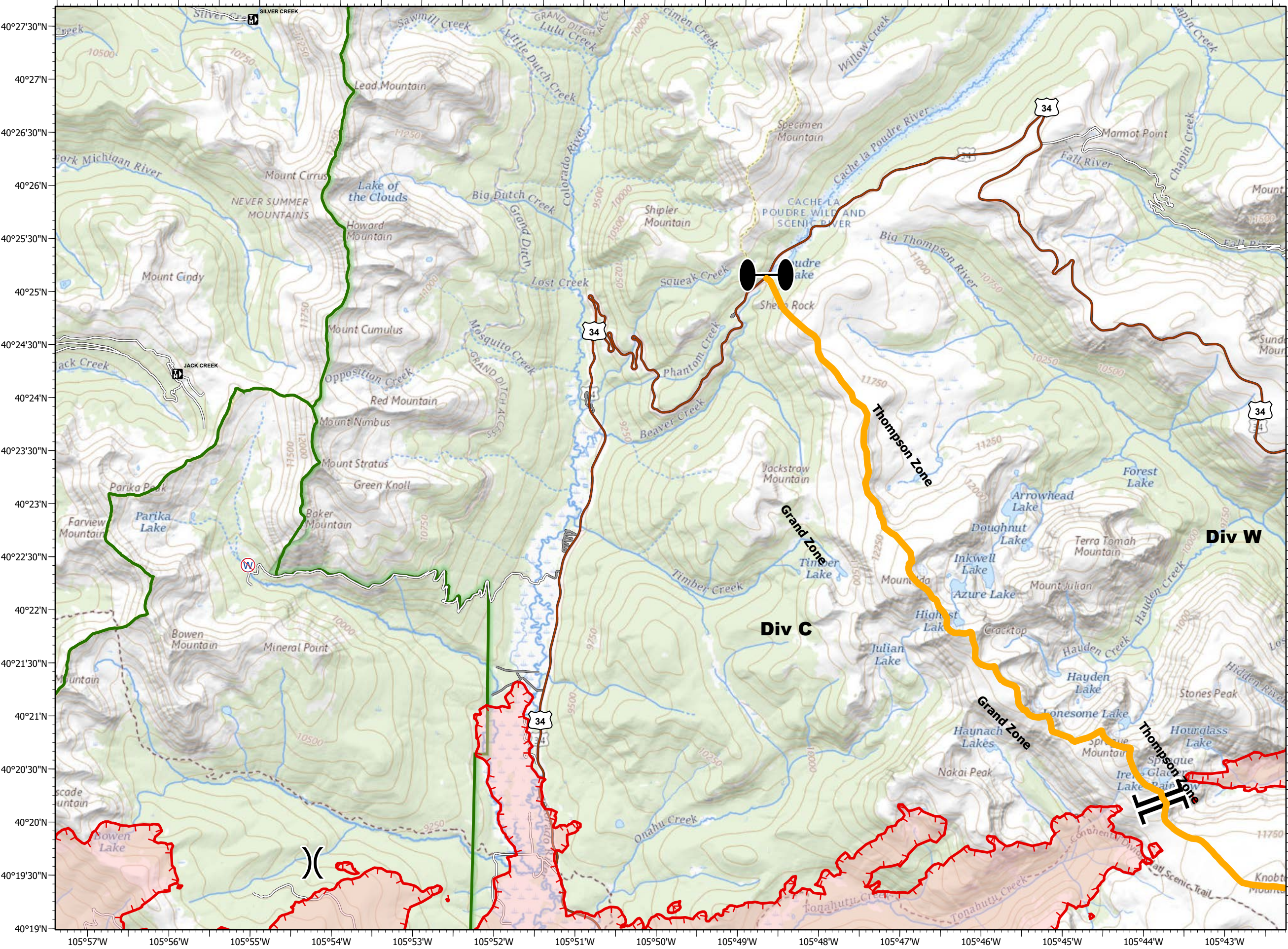
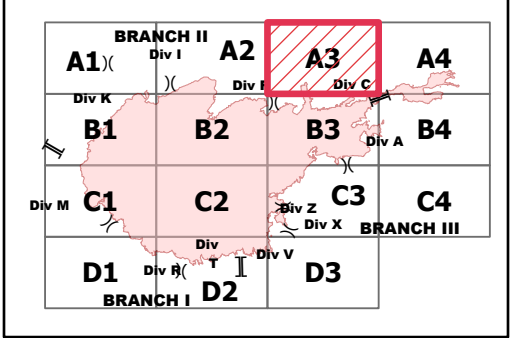
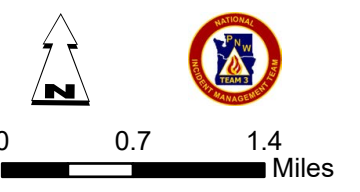
Fire Perimeter as of 10/27/20 1354 hrs  
 193,774 Total Acres  
 188,910 Grand Zone  
 4,864 Thompson Zone





-  Restricted Water Source
-  Zone Break
-  Division Break
-  Branch Break
-  Uncontrolled Fire Edge
-  Fire Perimeter
- Forest Powerline Data**
-  PubServCo\_CLC411113
-  MtnPrksElectricInc
- Utilities**
-  Power Lines
-  Gas Line
-  Res. Structures
-  Structures Centroids
-  Structure Footprints
-  Zone Break

Fire Perimeter as of 10/27/20 1354 hrs  
 193,774 Total Acres  
 188,910 Grand Zone  
 4,864 Thompson Zone





# EAST TROUBLESOME CREEK - GRAND ZONE

## WY-MRF-000408

10/27/2020

- Branch Break
- Uncontrolled Fire Edge
- Road as Completed Line
- Planned Fire Line
- Fire Perimeter

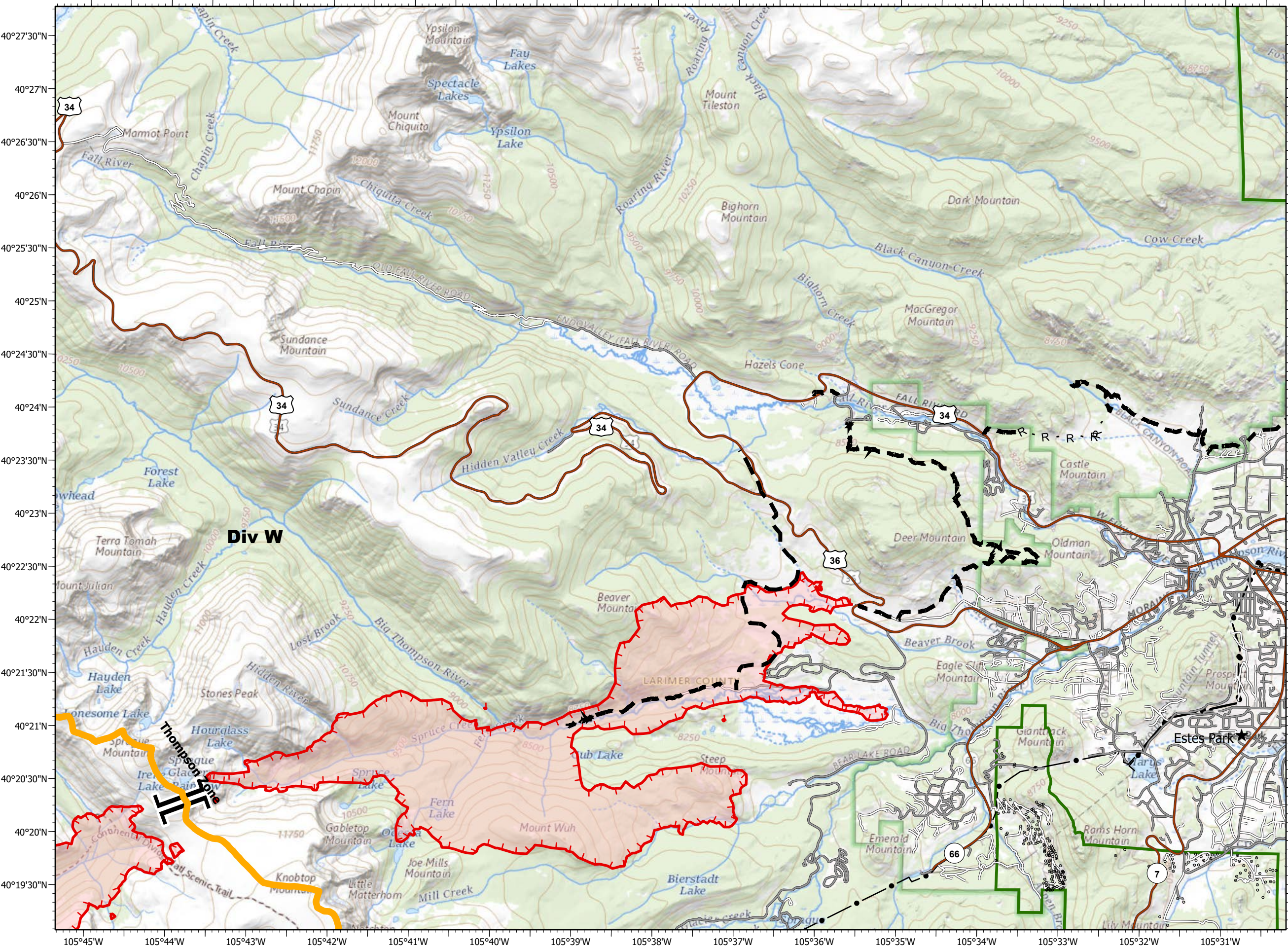
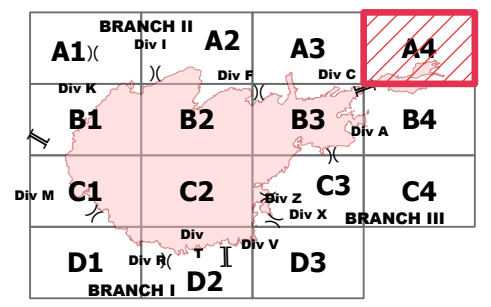
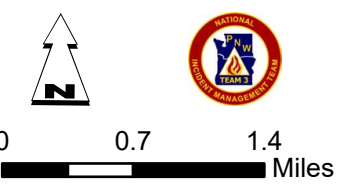
### Forest Powerline Data

- PubServCo\_CLC411113
- MtnPrksElectricInc

### Utilities

- Power Lines
- Gas Line
- Res. Structures
- Structures Centroids
- Structure Footprints
- Zone Break

Fire Perimeter as of 10/27/20 1354 hrs  
 193,774 Total Acres  
 188,910 Grand Zone  
 4,864 Thompson Zone



40°27'30"N  
40°27'N  
40°26'30"N  
40°26'N  
40°25'30"N  
40°25'N  
40°24'30"N  
40°24'N  
40°23'30"N  
40°23'N  
40°22'30"N  
40°22'N  
40°21'30"N  
40°21'N  
40°20'30"N  
40°20'N  
40°19'30"N

105°45'W 105°44'W 105°43'W 105°42'W 105°41'W 105°40'W 105°39'W 105°38'W 105°37'W 105°36'W 105°35'W 105°34'W 105°33'W 105°32'W 105°31'W



# EAST TROUBLESOME CREEK - GRAND ZONE

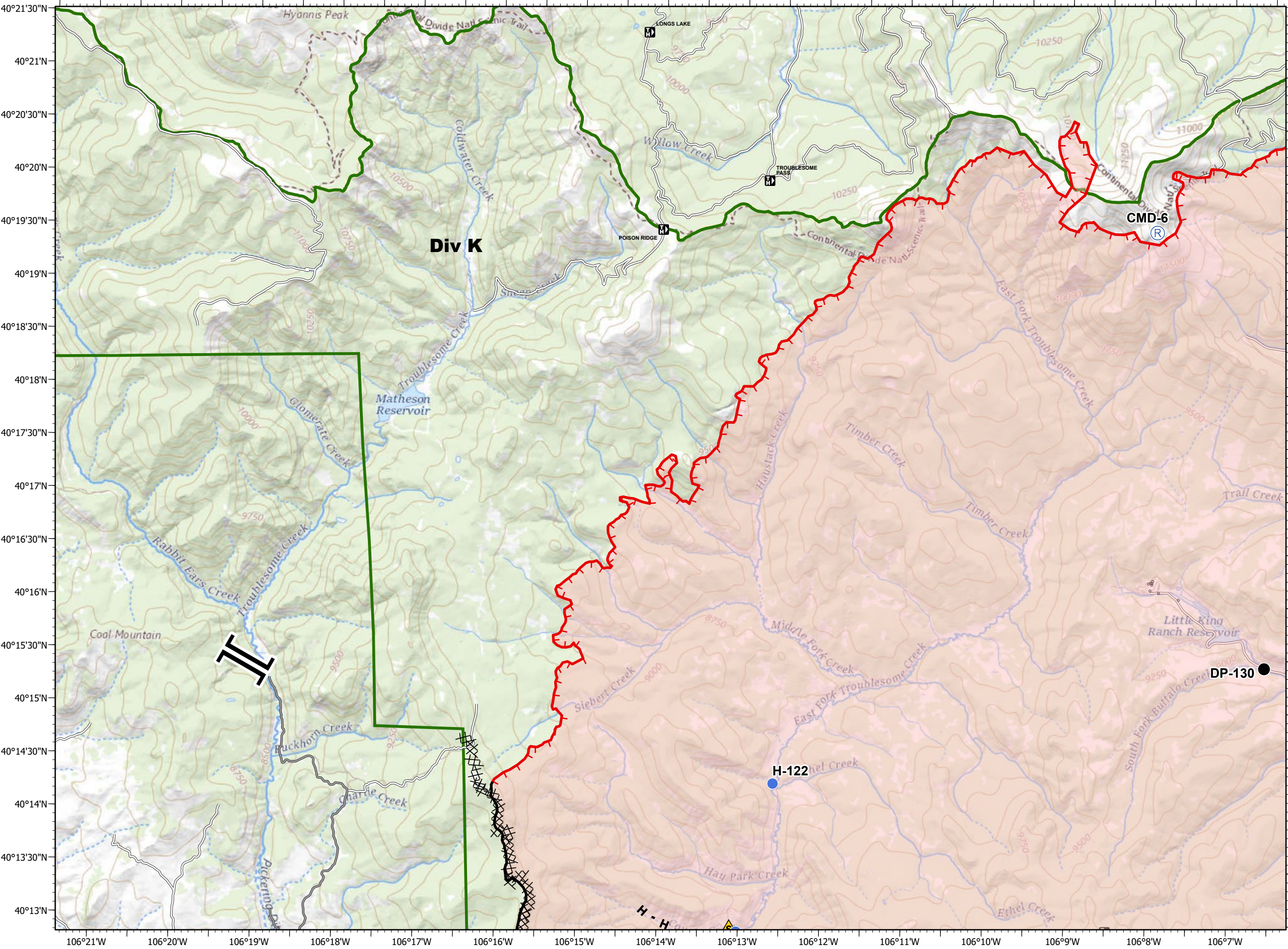
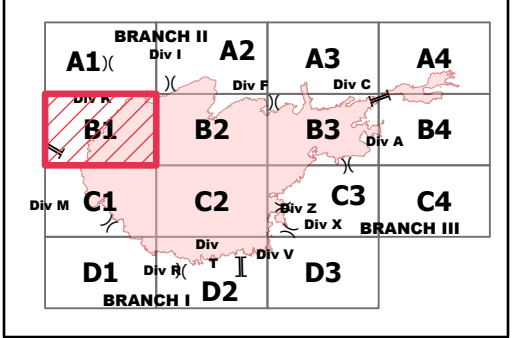
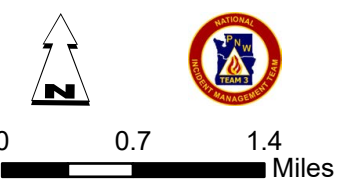
WY-MRF-000408  
10/27/2020

- Drop Point
- Helispot
- Ⓡ Repeater
- ▲ Safety Zone
- ]] Branch Break
- Uncontrolled Fire Edge
- Contained Line
- ⊗ Completed Dozer Line
- H Completed Hand Line
- R Road as Completed Line
- Fire Perimeter

- Forest Powerline Data**
- PubServCo\_CLC411113
  - MtnPrksElectricInc

- Utilities**
- Power Lines
  - ⊕ Gas Line
  - Res. Structures
  - Structures Centroids
  - Structure Footprints
  - Zone Break

Fire Perimeter as of 10/27/20 1354 hrs  
 193,774 Total Acres  
 188,910 Grand Zone  
 4,864 Thompson Zone



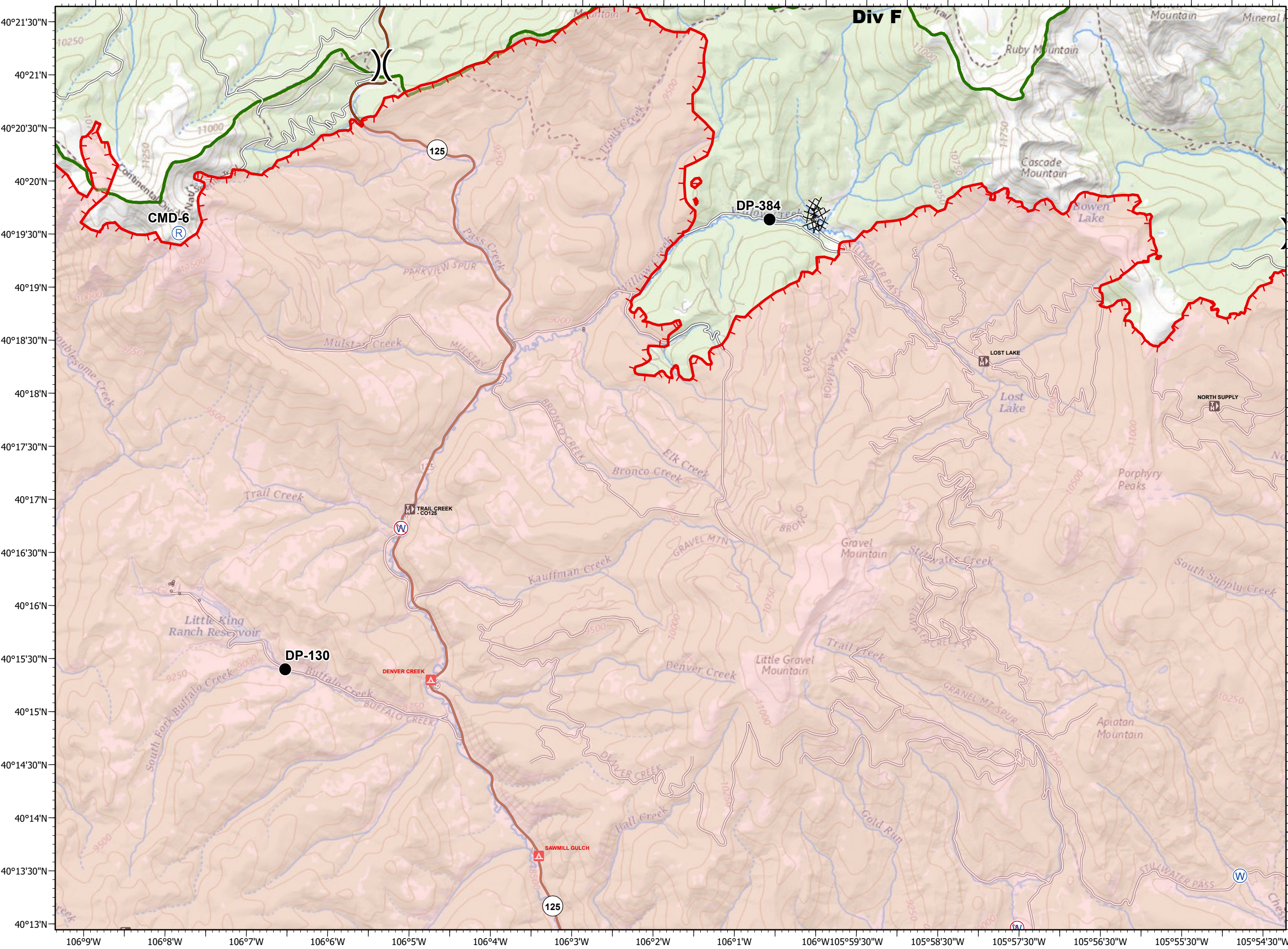
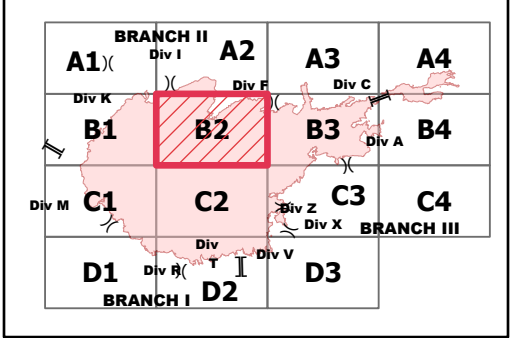
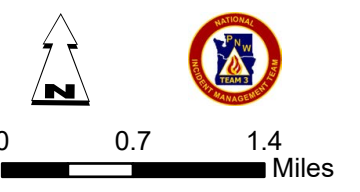
40°21'30"N  
40°21'N  
40°20'30"N  
40°20'N  
40°19'30"N  
40°19'N  
40°18'30"N  
40°18'N  
40°17'30"N  
40°17'N  
40°16'30"N  
40°16'N  
40°15'30"N  
40°15'N  
40°14'30"N  
40°14'N  
40°13'30"N  
40°13'N

106°21'W 106°20'W 106°19'W 106°18'W 106°17'W 106°16'W 106°15'W 106°14'W 106°13'W 106°12'W 106°11'W 106°10'W 106°9'W 106°8'W 106°7'W



- Drop Point
  - Ⓡ Repeater
  - Ⓜ Water Source
  - Ⓜ Restricted Water Source
  - ) ( Division Break
  - Uncontrolled Fire Edge
  - ⊗ Completed Dozer Line
  - Fire Perimeter
- Forest Powerline Data**
- PubServCo\_CLC411113
  - MtnPrksElectricInc
- Utilities**
- Power Lines
  - ⊕ Gas Line
  - Res. Structures
  - Structures Centroids
  - Structure Footprints
  - Zone Break

Fire Perimeter as of 10/27/20 1354 hrs  
 193,774 Total Acres  
 188,910 Grand Zone  
 4,864 Thompson Zone



106°9'W 106°8'W 106°7'W 106°6'W 106°5'W 106°4'W 106°3'W 106°2'W 106°1'W 106°W 105°59'30"W 105°58'30"W 105°57'30"W 105°56'30"W 105°55'30"W 105°54'30"W

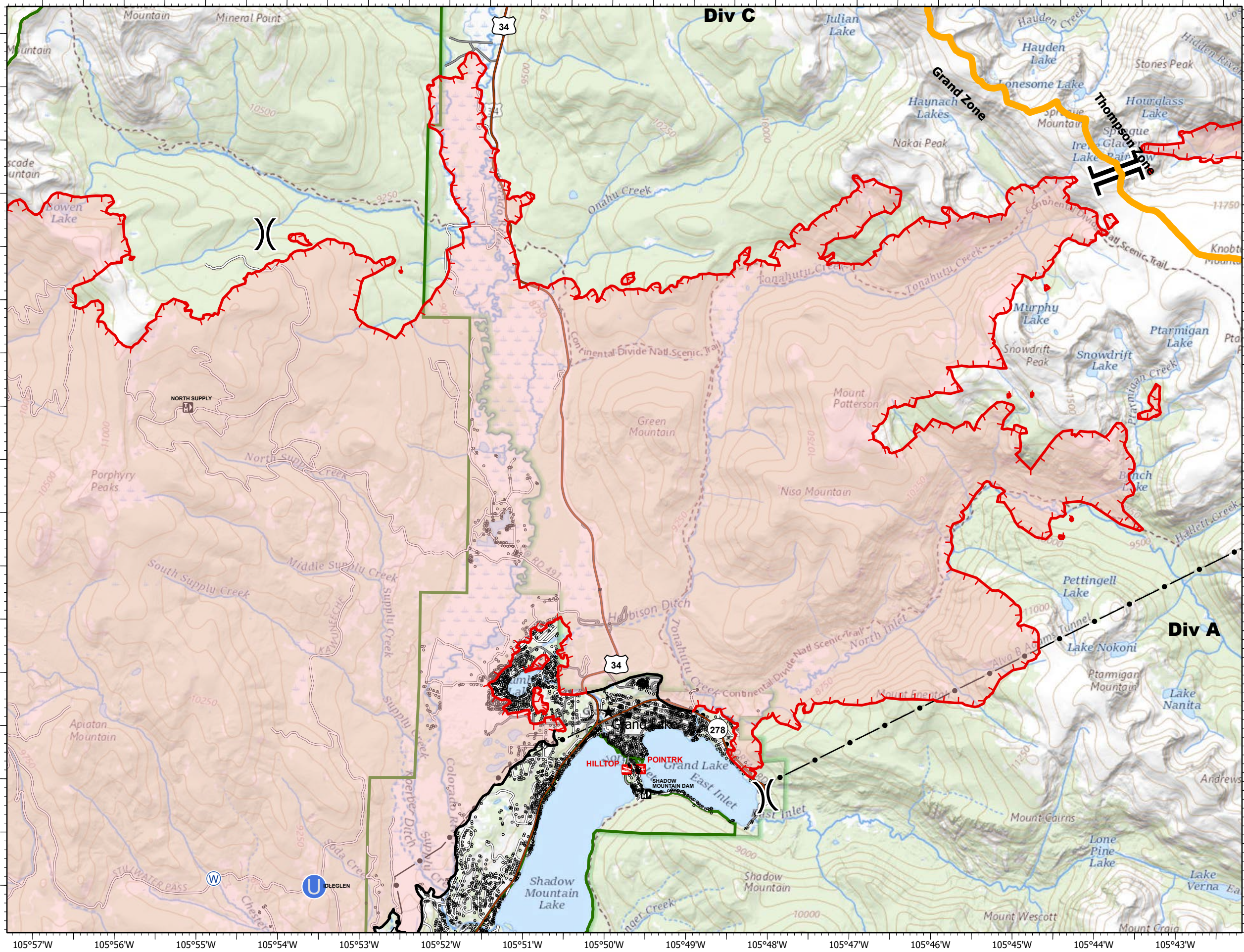
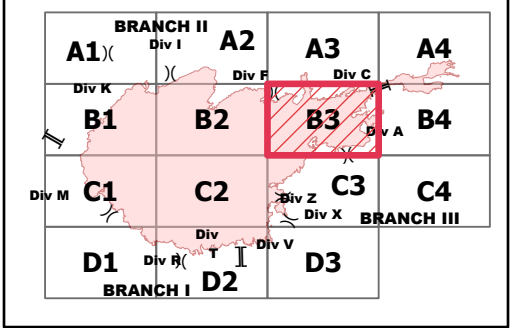
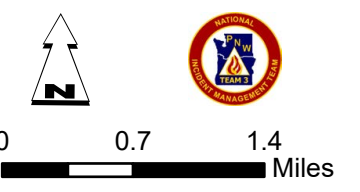


- Unimproved Landing Area
- Water Source
- Restricted Water Source
- Division Break
- Branch Break
- Uncontrolled Fire Edge
- Contained Line
- Fire Perimeter

- Forest Powerline Data**
- PubServCo\_CLC411113
  - MtnPrksElectricInc

- Utilities**
- Power Lines
  - Gas Line
  - Res. Structures
  - Structures Centroids
  - Structure Footprints
  - Zone Break

Fire Perimeter as of 10/27/20 1354 hrs  
 193,774 Total Acres  
 188,910 Grand Zone  
 4,864 Thompson Zone







40°21'30"N  
 40°21'N  
 40°20'30"N  
 40°20'N  
 40°19'30"N  
 40°19'N  
 40°18'30"N  
 40°18'N  
 40°17'30"N  
 40°17'N  
 40°16'30"N  
 40°16'N  
 40°15'30"N  
 40°15'N  
 40°14'30"N  
 40°14'N  
 40°13'30"N

105°57'W 105°56'W 105°55'W 105°54'W 105°53'W 105°52'W 105°51'W 105°50'W 105°49'W 105°48'W 105°47'W 105°46'W 105°45'W 105°44'W 105°43'W

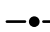
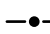


# EAST TROUBLESOME CREEK - GRAND ZONE

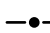
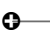




WY-MRF-000408  
10/27/2020

-  Branch Break
-  Uncontrolled Fire Edge
-  Planned Fire Line
-  Fire Perimeter

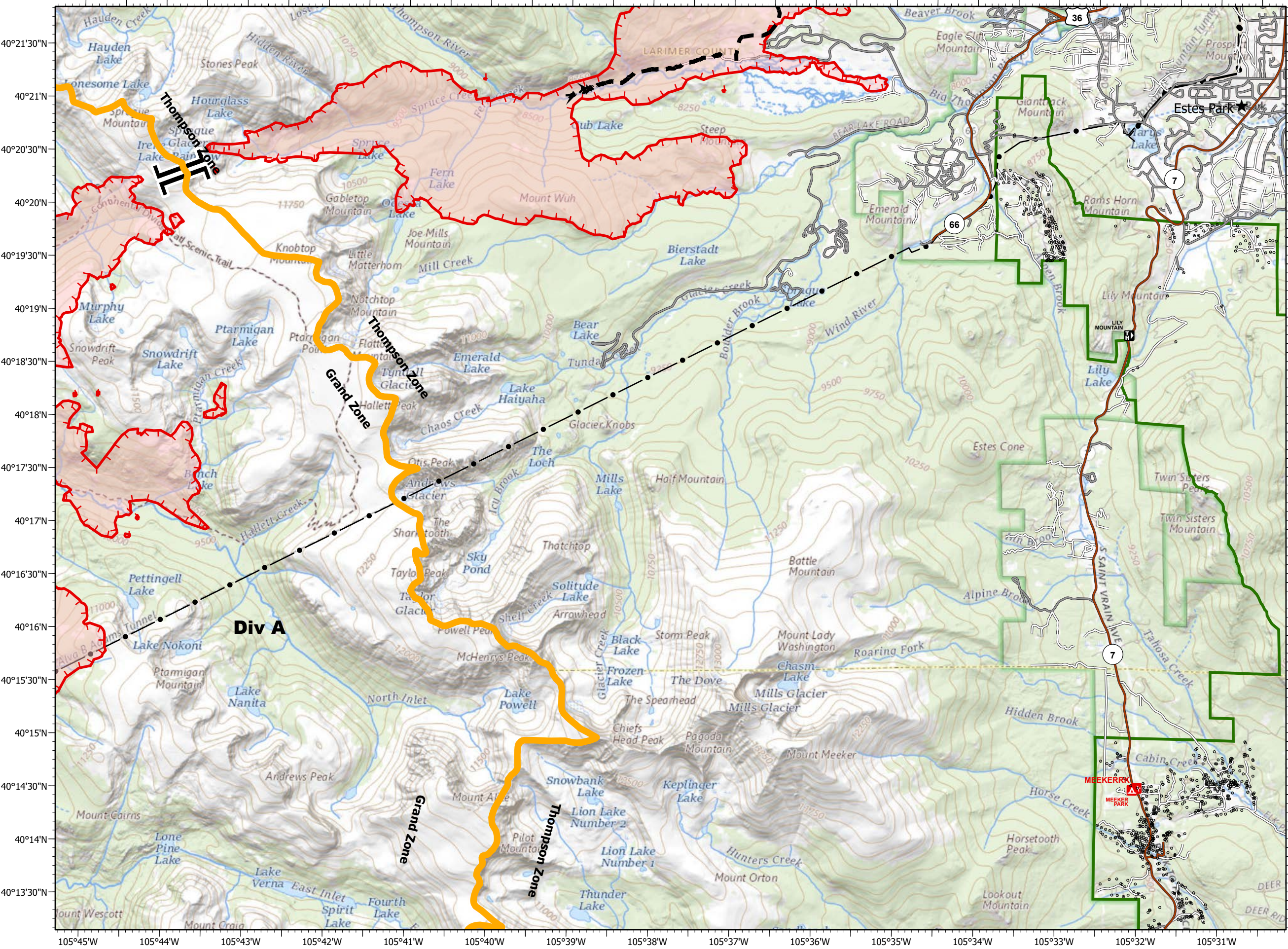
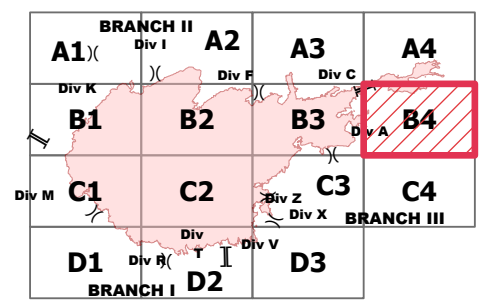
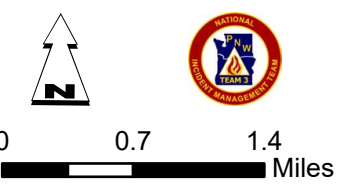
### Forest Powerline Data

-  PubServCo\_CLC411113
-  MtnPrksElectricInc

### Utilities

-  Power Lines
-  Gas Line
-  Res. Structures
-  Structures Centroids
-  Structure Footprints
-  Zone Break

Fire Perimeter as of 10/27/20 1354 hrs  
 193,774 Total Acres  
 188,910 Grand Zone  
 4,864 Thompson Zone

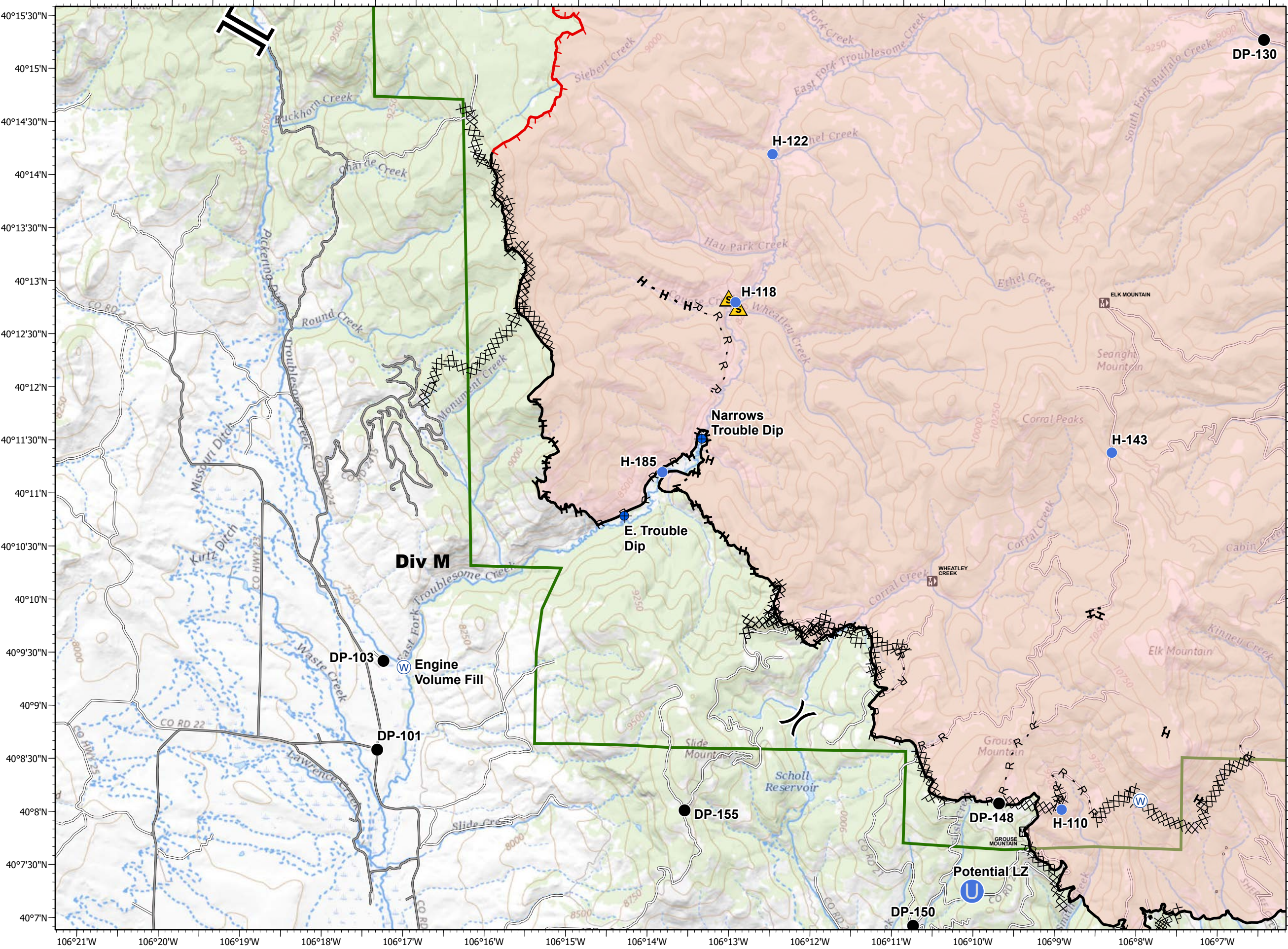
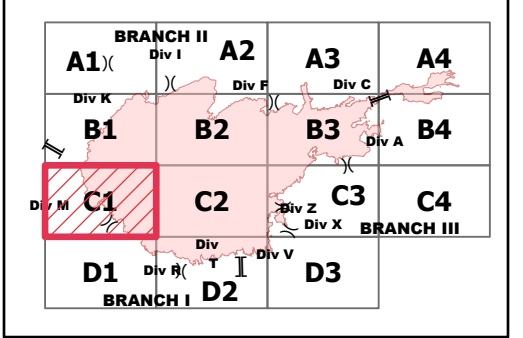
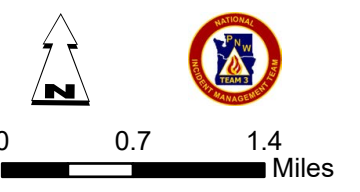




IAP - Page Name: C1  
**EAST TROUBLESOME CREEK - GRAND ZONE**  
**WY-MRF-000408**  
**10/27/2020**

- Dip Site
- Drop Point
- Unimproved Landing Area
- Helispot
- Safety Zone
- Water Source
- Division Break
- Branch Break
- Uncontrolled Fire Edge
- Contained Line
- Completed Dozer Line
- Completed Hand Line
- Road as Completed Line
- Fire Perimeter
- Forest Powerline Data**
- PubServCo\_CLC411113
- MtnPrksElectricInc
- Utilities**
- Power Lines
- Gas Line
- Res. Structures
- Structures Centroids
- Structure Footprints
- Zone Break

Fire Perimeter as of 10/27/20 1354 hrs  
 193,774 Total Acres  
 188,910 Grand Zone  
 4,864 Thompson Zone

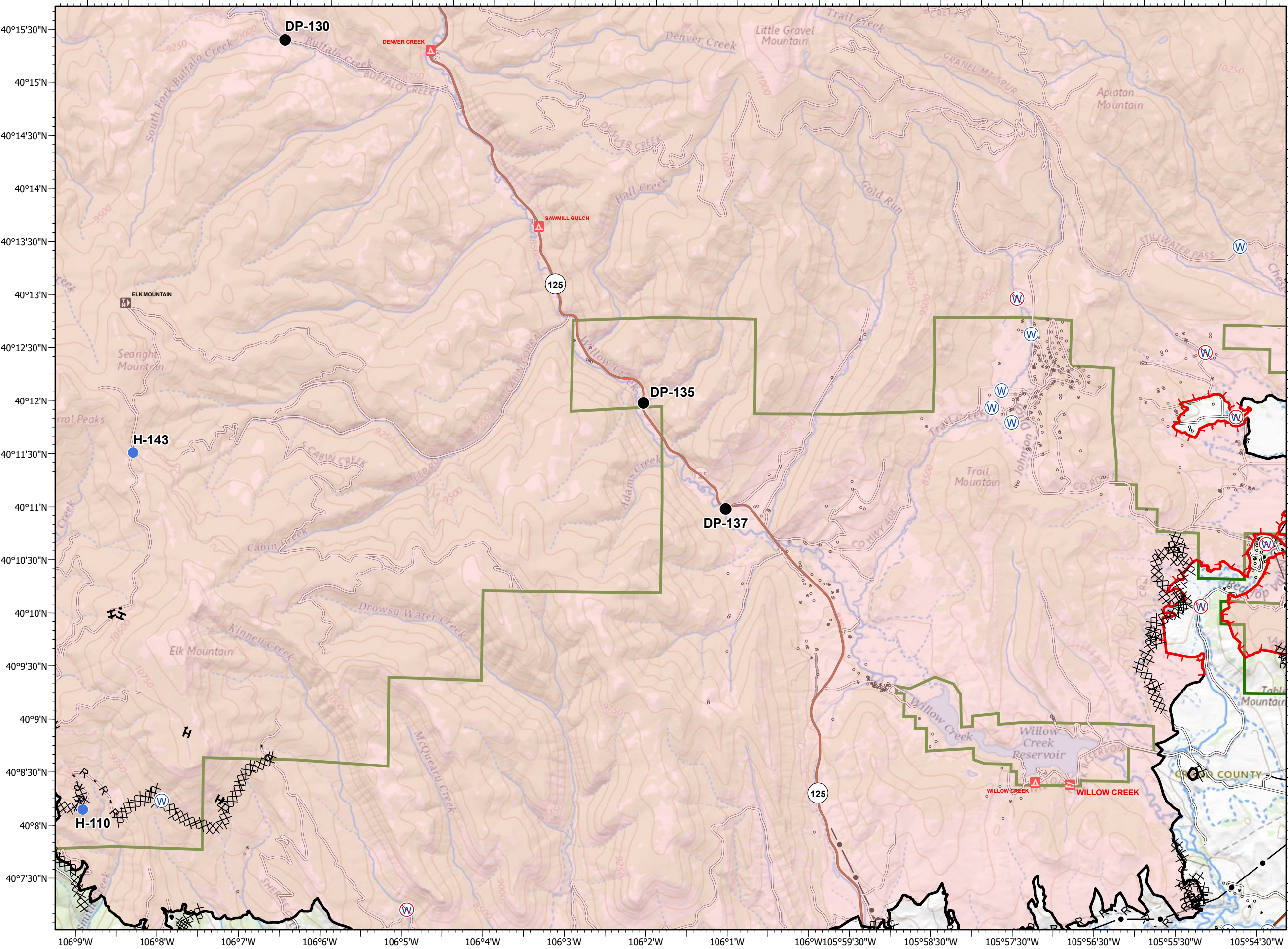
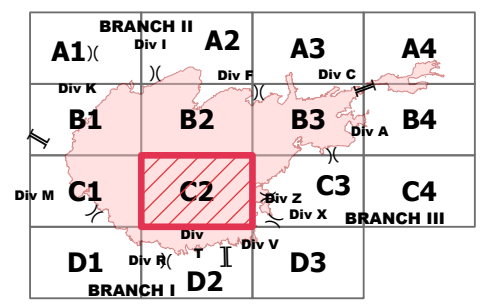
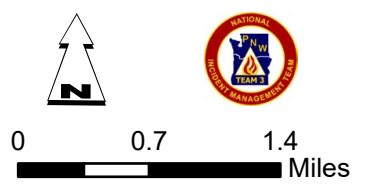




IAP - Page Name: C2  
**EAST TROUBLESOME CREEK - GRAND ZONE**  
**WY-MRF-000408**  
**10/27/2020**

- Drop Point
- Helispot
- ⊕ Water Source
- ⊕ Restricted Water Source
- ) ( Division Break
- ▬ Uncontrolled Fire Edge
- ▬ Contained Line
- ⊗ Completed Dozer Line
- H Completed Hand Line
- R Road as Completed Line
- ▭ Fire Perimeter
- Forest Powerline Data**
- PubServCo\_CLC411113
- MtnPrksElectricInc
- Utilities**
- Power Lines
- ⊕ Gas Line
- Res. Structures
- Structures Centroids
- Structure Footprints
- ▬ Zone Break

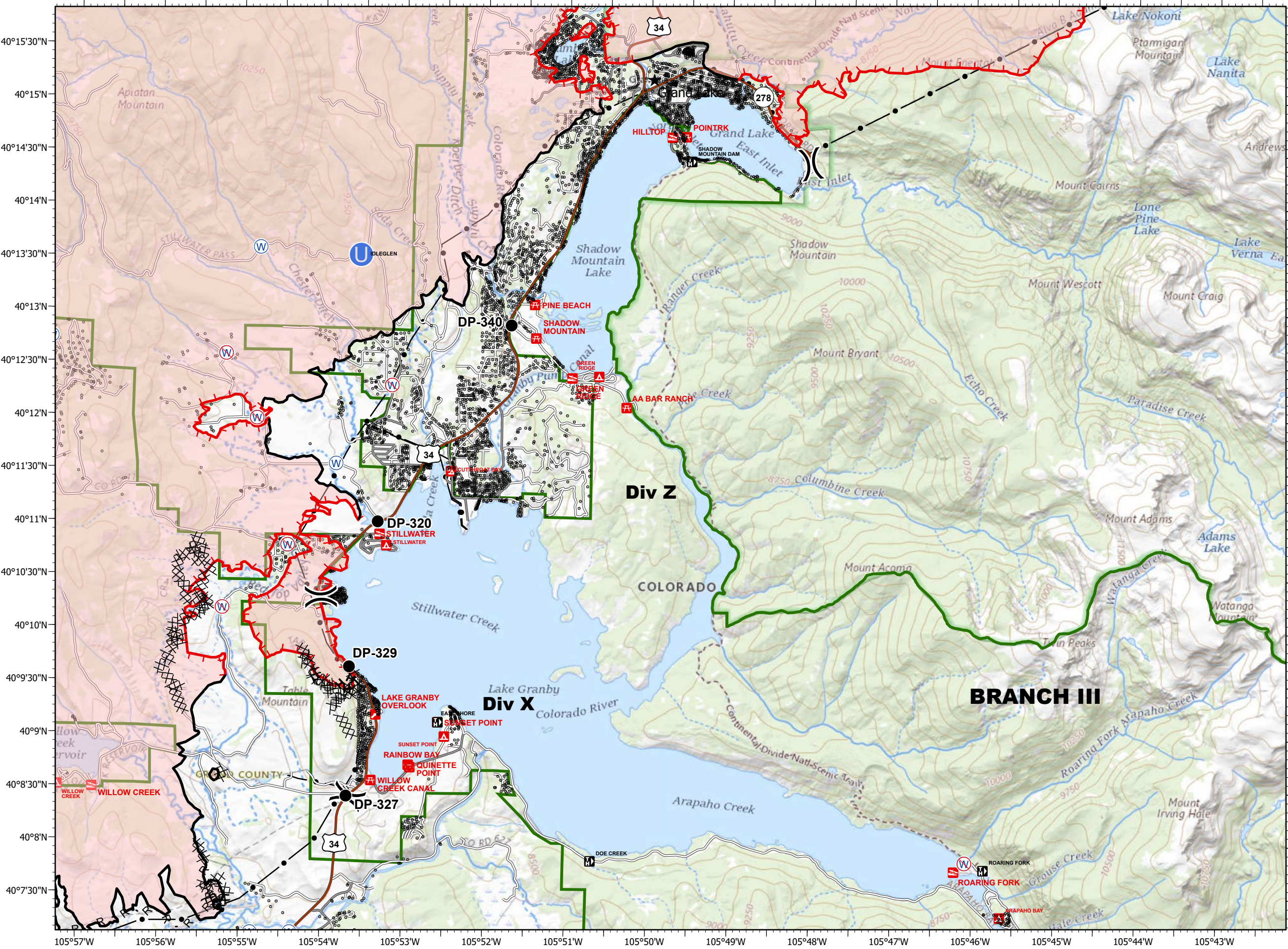
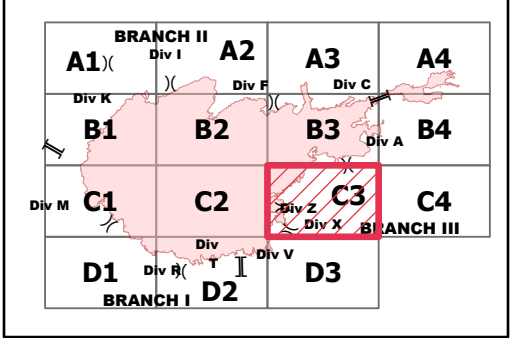
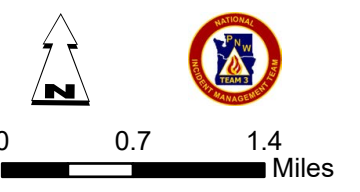
Fire Perimeter as of 10/27/20 1354 hrs  
 193,774 Total Acres  
 188,910 Grand Zone  
 4,864 Thompson Zone





- Drop Point
  - Unimproved Landing Area
  - ⊕ Water Source
  - ⊕ Restricted Water Source
  - ) ( Division Break
  - Uncontrolled Fire Edge
  - Contained Line
  - ⊗ Completed Dozer Line
  - H Completed Hand Line
  - R Road as Completed Line
  - Fire Perimeter
- Forest Powerline Data**
- PubServCo\_CLC411113
  - MtnPrksElectricInc
- Utilities**
- Power Lines
  - ⊕ Gas Line
  - Res. Structures
  - Structures Centroids
  - Structure Footprints
  - Zone Break

Fire Perimeter as of 10/27/20 1354 hrs  
 193,774 Total Acres  
 188,910 Grand Zone  
 4,864 Thompson Zone





# EAST TROUBLESOME CREEK - GRAND ZONE

WY-MRF-000408  
10/27/2020

- Zone Break
- Uncontrolled Fire Edge
- Fire Perimeter

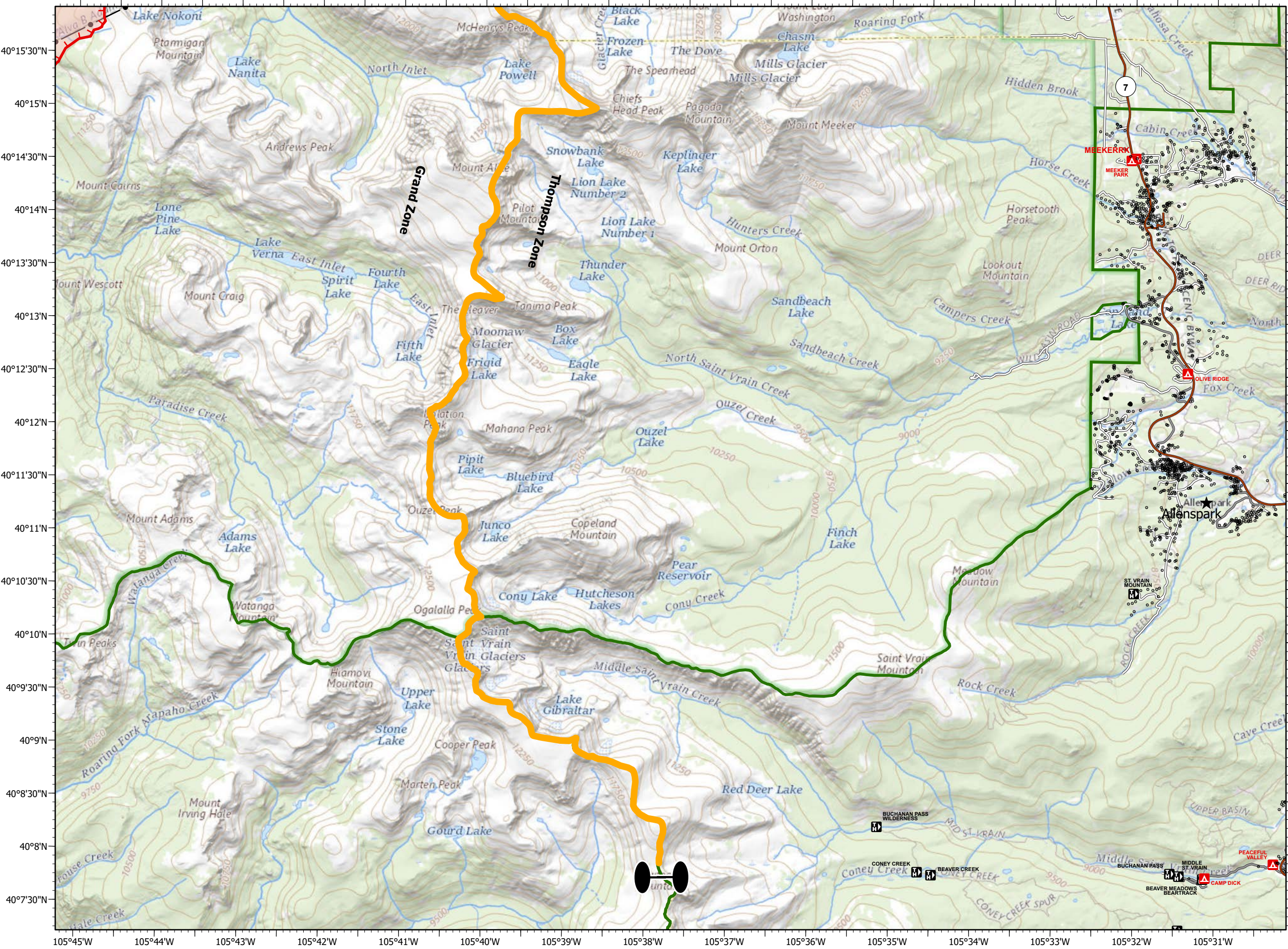
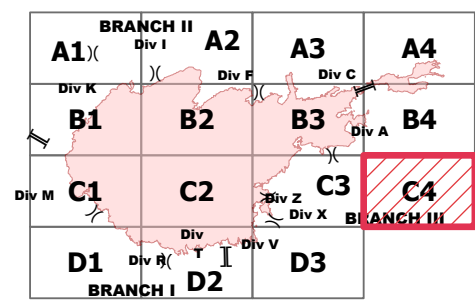
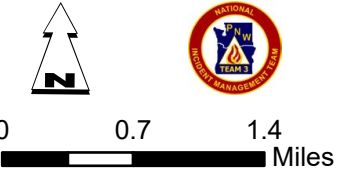
### Forest Powerline Data

- PubServCo\_CLC411113
- MtnPrksElectricInc

### Utilities

- Power Lines
- Gas Line
- Res. Structures
- Structures Centroids
- Structure Footprints
- Zone Break

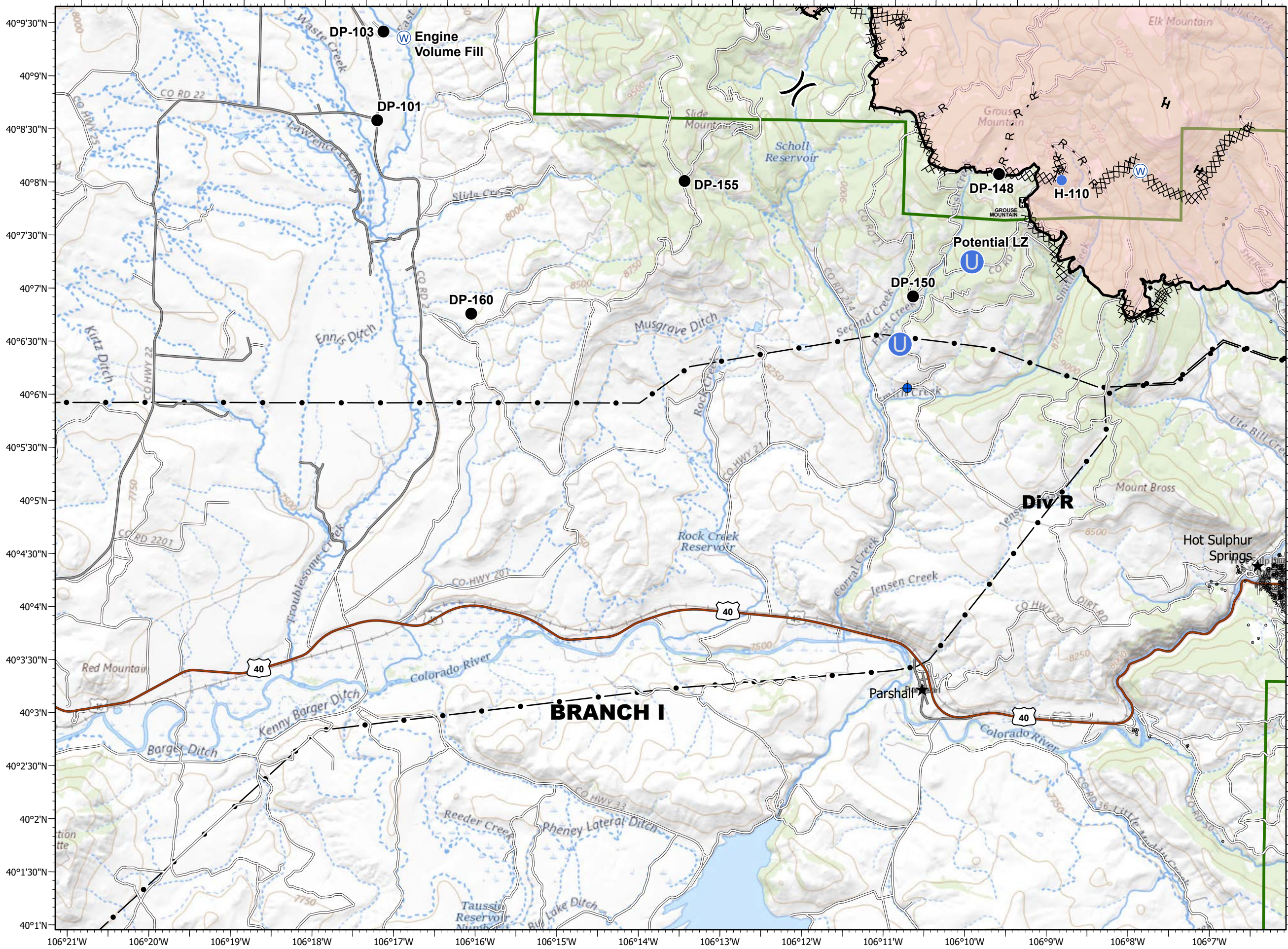
Fire Perimeter as of 10/27/20 1354 hrs  
 193,774 Total Acres  
 188,910 Grand Zone  
 4,864 Thompson Zone



105°45'W 105°44'W 105°43'W 105°42'W 105°41'W 105°40'W 105°39'W 105°38'W 105°37'W 105°36'W 105°35'W 105°34'W 105°33'W 105°32'W 105°31'W

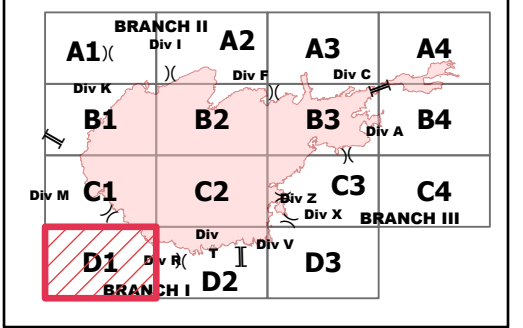
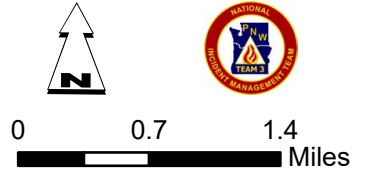
40°15'30"N  
40°15'N  
40°14'30"N  
40°14'N  
40°13'30"N  
40°13'N  
40°12'30"N  
40°12'N  
40°11'30"N  
40°11'N  
40°10'30"N  
40°10'N  
40°9'30"N  
40°9'N  
40°8'30"N  
40°8'N  
40°7'30"N





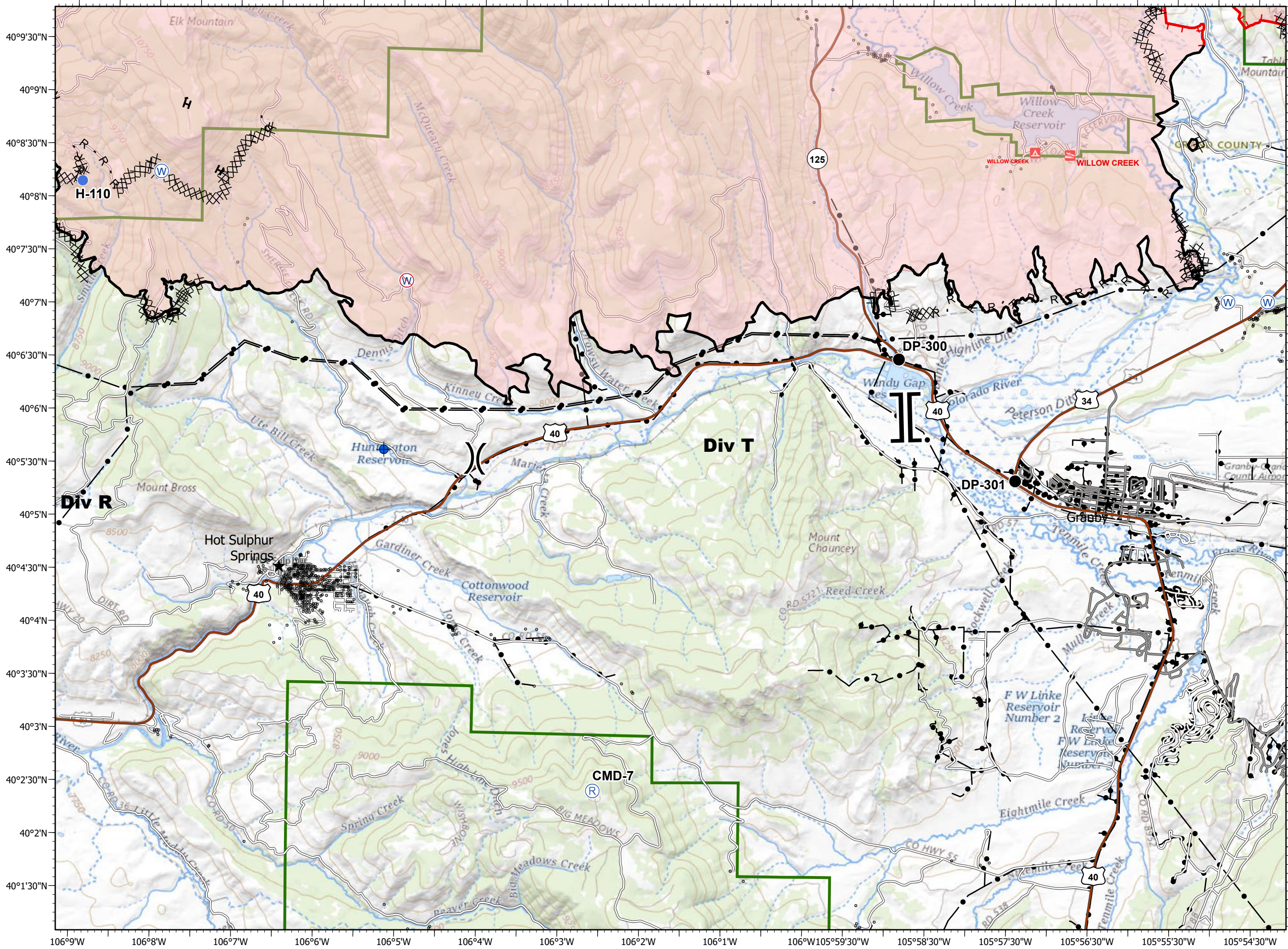
- Dip Site
  - Drop Point
  - Unimproved Landing Area
  - Helispot
  - Water Source
  - Division Break
  - Contained Line
  - Completed Dozer Line
  - Completed Hand Line
  - Road as Completed Line
  - Fire Perimeter
- Forest Powerline Data**
- PubServCo\_CLC411113
  - MtnPrksElectricInc
- Utilities**
- Power Lines
  - Gas Line
  - Res. Structures
  - Structures Centroids
  - Structure Footprints
  - Zone Break

Fire Perimeter as of 10/27/20 1354 hrs  
 193,774 Total Acres  
 188,910 Grand Zone  
 4,864 Thompson Zone



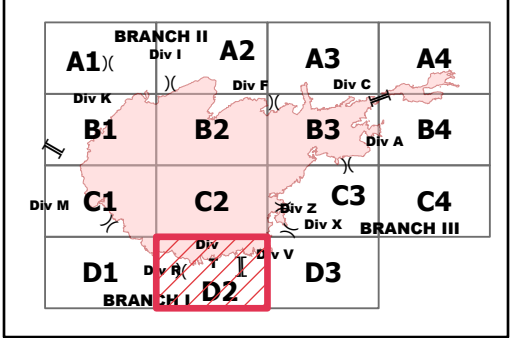
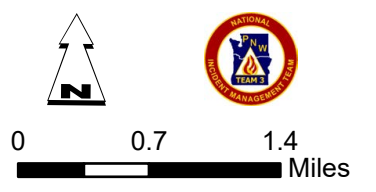


IAP - Page Name: D2  
**EAST TROUBLESOME CREEK - GRAND ZONE**  
**WY-MRF-000408**  
**10/27/2020**



- Dip Site
- Drop Point
- Helispot
- Repeater
- Water Source
- Restricted Water Source
- Division Break
- Branch Break
- Uncontrolled Fire Edge
- Contained Line
- Completed Dozer Line
- Completed Hand Line
- Road as Completed Line
- Fire Perimeter
- Forest Powerline Data**
- PubServCo\_CLC411113
- MtnPrksElectricInc
- Utilities**
- Power Lines
- Gas Line
- Res. Structures
- Structures Centroids
- Structure Footprints
- Zone Break

Fire Perimeter as of 10/27/20 1354 hrs  
 193,774 Total Acres  
 188,910 Grand Zone  
 4,864 Thompson Zone





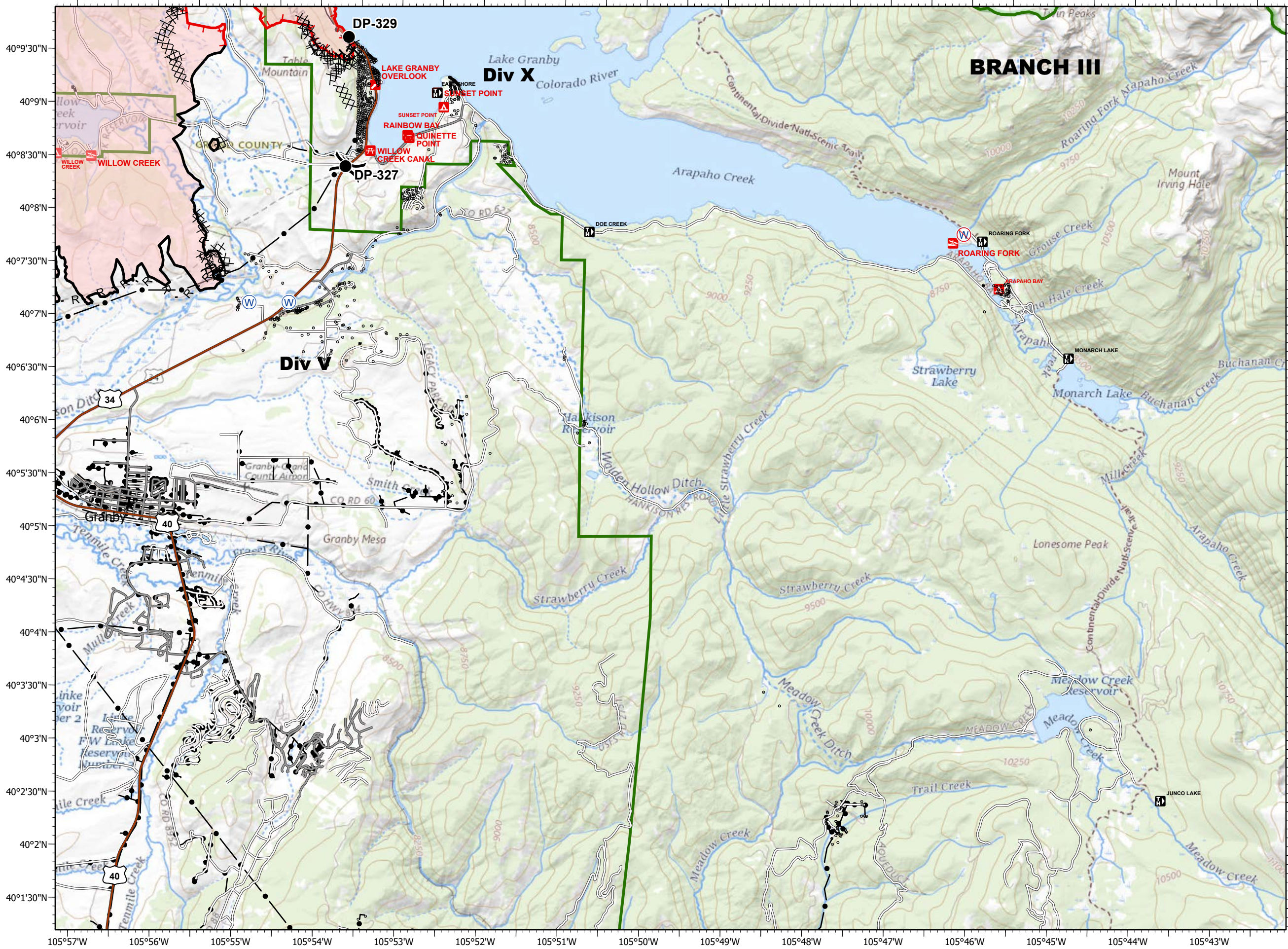
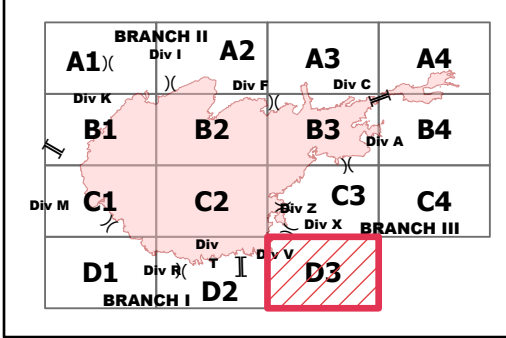
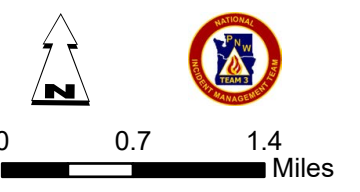
# EAST TROUBLESOME CREEK - GRAND ZONE

## WY-MRF-000408

10/27/2020

- Drop Point
  - ⊕ Water Source
  - ⊕ Restricted Water Source
  - ) ( Division Break
  - Uncontrolled Fire Edge
  - Contained Line
  - ⊗ Completed Dozer Line
  - H Completed Hand Line
  - R Road as Completed Line
  - Fire Perimeter
- Forest Powerline Data**
- PubServCo\_CLC411113
  - MtnPrksElectricInc
- Utilities**
- Power Lines
  - ⊕ Gas Line
  - Res. Structures
  - Structures Centroids
  - Structure Footprints
  - Zone Break

Fire Perimeter as of 10/27/20 1354 hrs  
 193,774 Total Acres  
 188,910 Grand Zone  
 4,864 Thompson Zone



40°9'30"N  
40°9'N  
40°8'30"N  
40°8'N  
40°7'30"N  
40°7'N  
40°6'30"N  
40°6'N  
40°5'30"N  
40°5'N  
40°4'30"N  
40°4'N  
40°3'30"N  
40°3'N  
40°2'30"N  
40°2'N  
40°1'30"N

105°57'W 105°56'W 105°55'W 105°54'W 105°53'W 105°52'W 105°51'W 105°50'W 105°49'W 105°48'W 105°47'W 105°46'W 105°45'W 105°44'W 105°43'W