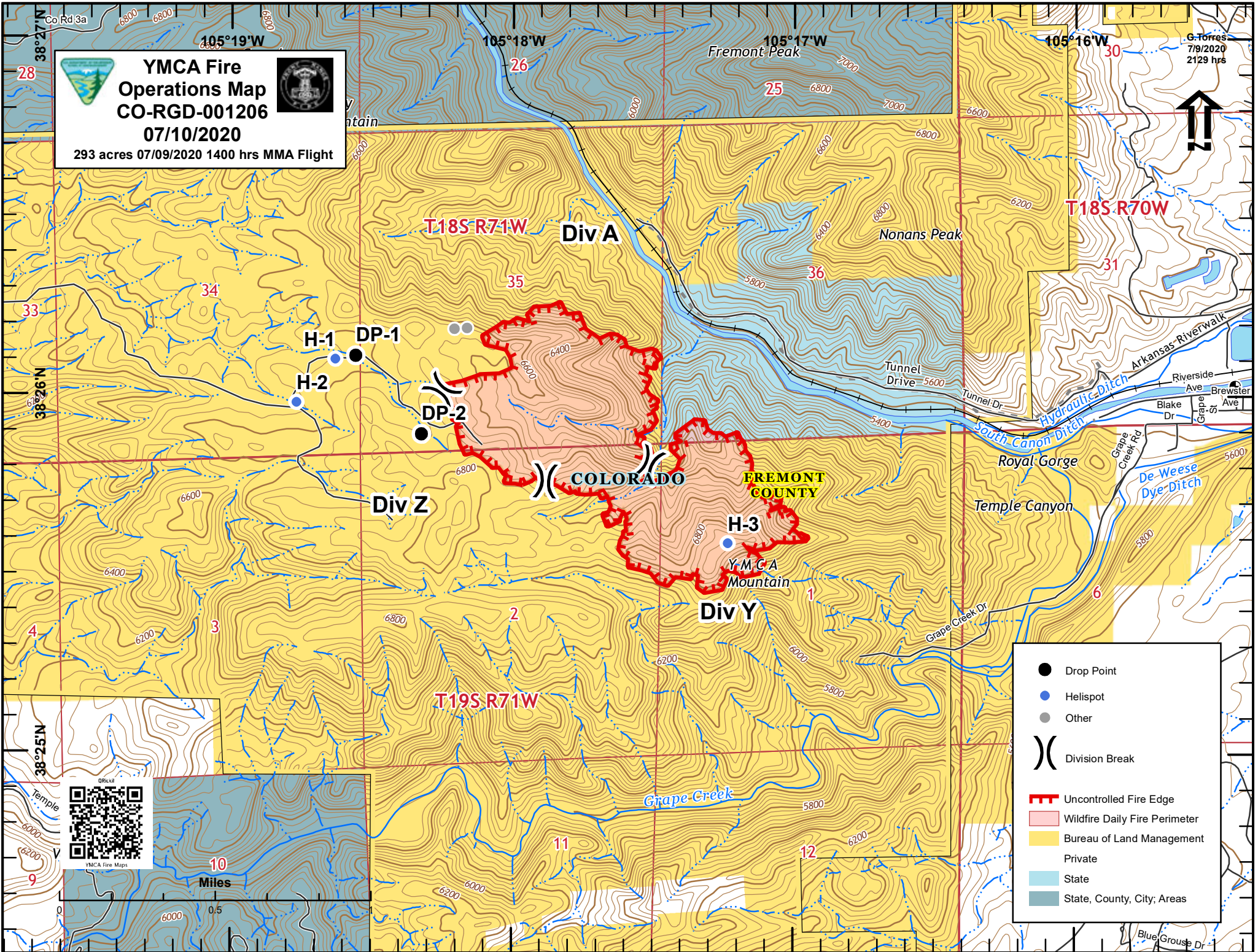




**YMCA Fire  
Operations Map**  
CO-RGD-001206  
07/10/2020  
293 acres 07/09/2020 1400 hrs MMA Flight



G. Torres  
7/9/2020  
2129 hrs



T18S R71W Div A

T18S R70W

35

31

H-1 DP-1

H-2

DP-2

COLORADO

EREMONT COUNTY

Div Z

Royal Gorge

Temple Canyon

Div Y

Y.M.C.A. Mountain

T19S R71W

Grape Creek

11

12

● Drop Point

● Helispot

● Other

) ( Division Break

▬▬▬ Uncontrolled Fire Edge

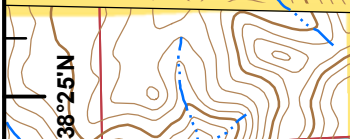

▭ Wildfire Daily Fire Perimeter

▭ Bureau of Land Management

▭ Private

▭ State

▭ State, County, City, Areas

Y.M.C.A. Fire Maps

10 Miles

0 0.5