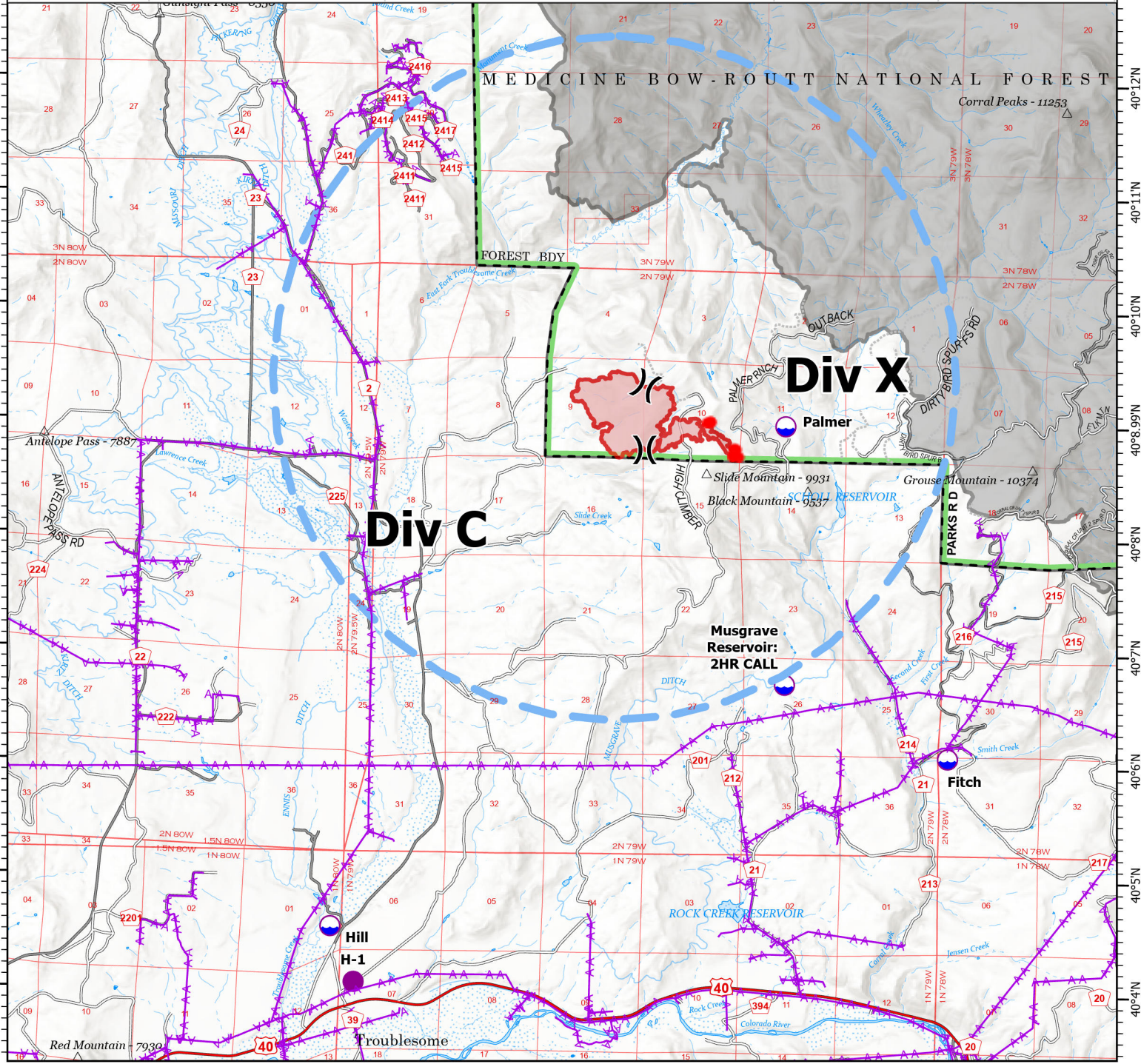


Type	Label	Comments	Latitude	Longitude
Helispot	H-1	FOB Helispot	40° 04.06738230' N	106° 17.52762672' W
Dip Site	Palmer	Gate is open (1234). Pond 14ft deep @ NE corner.	40° 08.99338332' N	106° 12.66562620' W
Dip Site	Musgrave Reservoir: 2HR CALL	2-HR CALL AHEAD (Scholl). 8ft deep.	40° 06.72538302' N	106° 12.64262592' W
Dip Site	Fitch	6-8ft deep.	40° 06.08238306' N	106° 10.76562540' W
Dip Site	Hill	12ft deep.	40° 04.55338236' N	106° 17.80262682' W



**Pilot Map**

Black Mountain Fire  
WY-MRF-000514  
9/2/21 Day

416 acres as of 9/1 @ 1142

SM  
9/1/2021 2159  
Acres from MMA

North American 1983 Datum, Lat/Long Grid

- IR Isolated Heat Source
- ◐ Dip Site
- Helispot
- ) ( Division Break
- △ Peaks
- ⚡ Powerlines
- ▬ TFR 1/8134
- ▬ Wildfire Daily Fire Perimeter
- ▬ FS Administrative Forest
- ▬ Fire Perimeters 2019-2021



0 0.45 0.9 1.8  
Miles