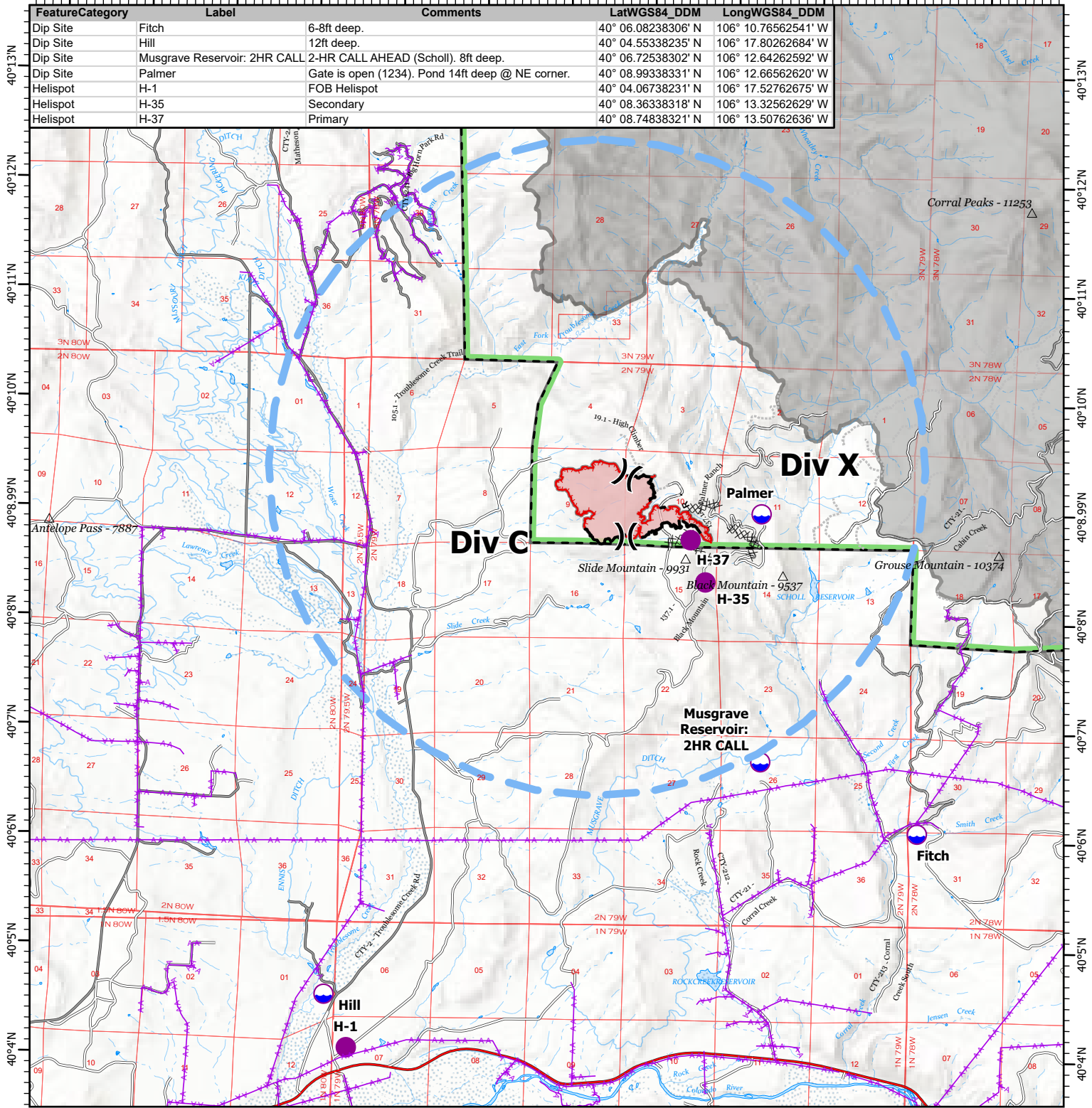


FeatureCategory	Label	Comments	LatWGS84_DDM	LongWGS84_DDM
Dip Site	Fitch	6-8ft deep.	40° 06.08238306' N	106° 10.76562541' W
Dip Site	Hill	12ft deep.	40° 04.55338235' N	106° 17.80262684' W
Dip Site	Musgrave Reservoir: 2HR CALL	2-HR CALL AHEAD (Scholl). 8ft deep.	40° 06.72538302' N	106° 12.64262592' W
Dip Site	Palmer	Gate is open (1234). Pond 14ft deep @ NE corner.	40° 08.99338331' N	106° 12.66562620' W
Helispot	H-1	FOB Helispot	40° 04.06738231' N	106° 17.52762675' W
Helispot	H-35	Secondary	40° 08.36338318' N	106° 13.32562629' W
Helispot	H-37	Primary	40° 08.74838321' N	106° 13.50762636' W



## Pilot Map

Black Mountain Fire  
WY-MRF-000514  
9/5/21 Day

**416 acres as of 9/4 @ 1220**  
**35% containment**

SM  
9/4/2021 2105  
Acres from MMA  
North American 1983 Datum, Lat/Long Grid

- Dip Site
- Helispot
- Division Break
- Peaks
- Powerlines
- Completed Dozer Line
- Completed Hand Line
- Completed Road as Line
- Fire Edge
- Contained Line
- TFR 1/8134
- Access Routes
- Wildfire Daily Fire Perimeter
- FS Administrative Forest
- Fire Perimeters 2019-2021



0 0.45 0.9 1.8  
Miles