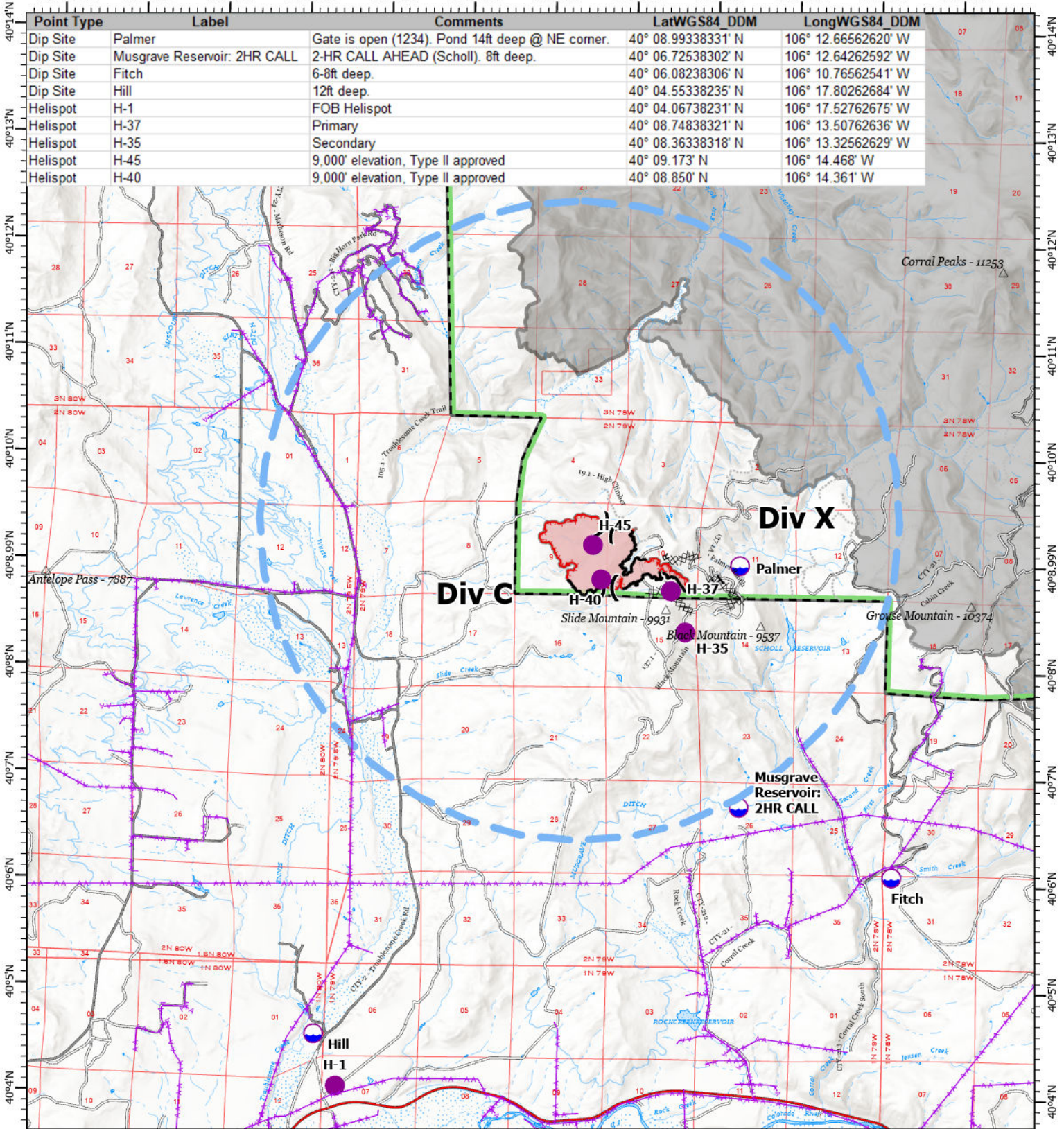


106°21.01'W 106°20'W 106°19'W 106°18'W 106°17'W 106°16'W 106°15'W 106°14'W 106°13'W 106°12'W 106°11'W 106°10'W



| Point Type | Label | Comments | LatWGS84 DDM | LongWGS84 DDM |
|------------|------------------------------|--|--------------------|---------------------|
| Dip Site | Palmer | Gate is open (1234). Pond 14ft deep @ NE corner. | 40° 08.99338331' N | 106° 12.66562620' W |
| Dip Site | Musgrave Reservoir: 2HR CALL | 2-HR CALL AHEAD (Scholl). 8ft deep. | 40° 06.72538302' N | 106° 12.64262592' W |
| Dip Site | Fitch | 6-8ft deep. | 40° 06.08238306' N | 106° 10.76562541' W |
| Dip Site | Hill | 12ft deep. | 40° 04.55338235' N | 106° 17.80262684' W |
| Helispot | H-1 | FOB Helispot | 40° 04.06738231' N | 106° 17.52762675' W |
| Helispot | H-37 | Primary | 40° 08.74838321' N | 106° 13.50762636' W |
| Helispot | H-35 | Secondary | 40° 08.36338318' N | 106° 13.32562629' W |
| Helispot | H-45 | 9,000' elevation, Type II approved | 40° 09.173' N | 106° 14.468' W |
| Helispot | H-40 | 9,000' elevation, Type II approved | 40° 08.850' N | 106° 14.361' W |

Pilot Map
 Black Mountain Fire
 WY-MRF-000514
 9/6/21 Day
 416 acres as of 9/4 @ 1220

CF - GISS
 9/5/2021 2208
 Acres from MMA

North American 1983 Datum. Lat,Long Grid

- Dip Site
- Helispot
- Division Break
- Peaks
- Powerlines
- Completed Dozer Line
- Completed Hand Line
- Completed Road as Line
- Fire Edge
- Contained Line
- TFR 1/8134
- Access Routes
- Wildfire Daily Fire Perimeter
- FS Administrative Forest
- Fire Perimeters 2019-2021



0 0.5 1 2
 Miles