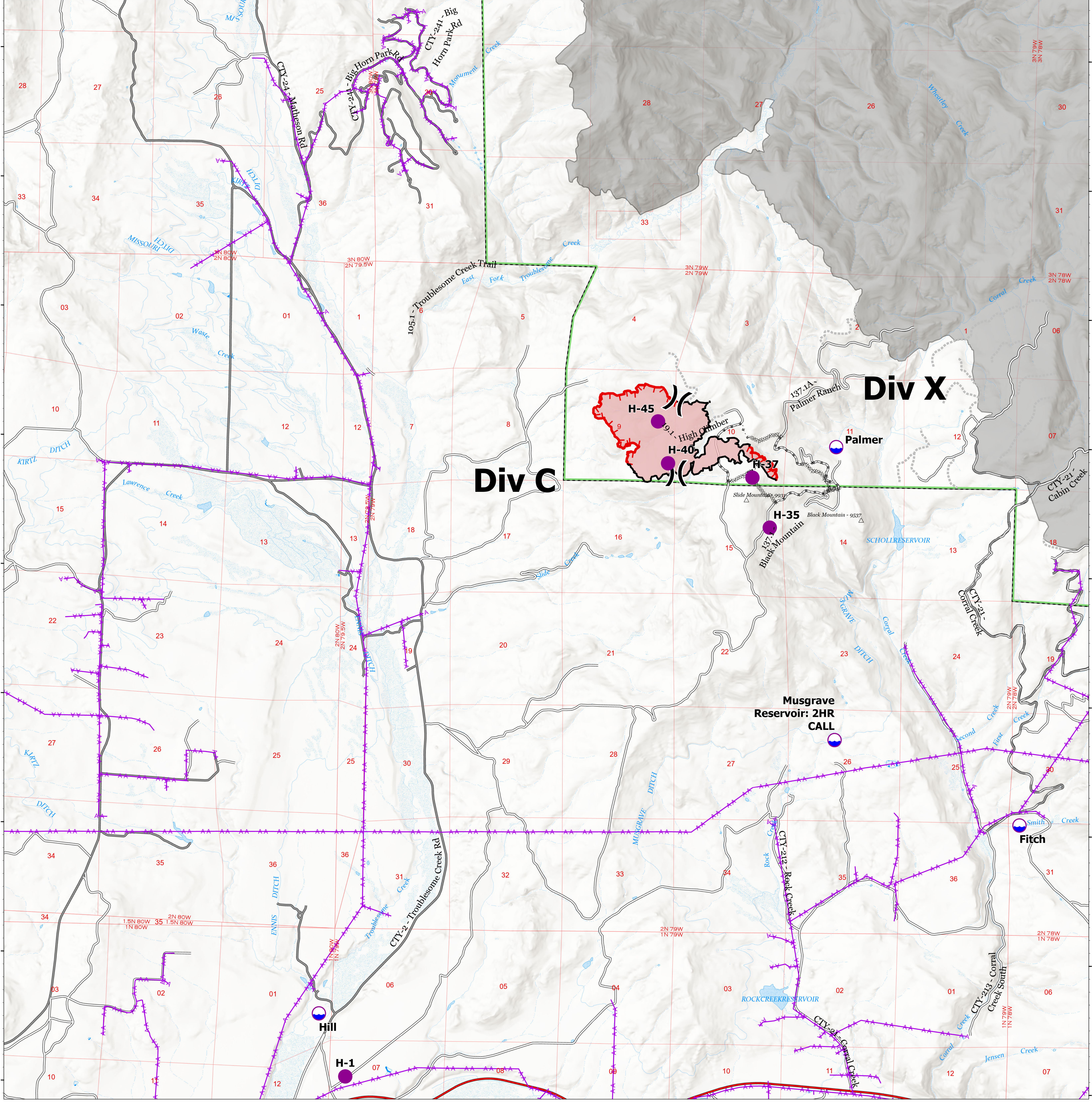


106°21.01'W 106°20'W 106°19'W 106°18'W 106°17'W 106°16'W 106°15'W 106°14'W 106°13'W 106°12'W 106°11'W

Point Type	Label	Comments	LatWGS84_DDM	LongWGS84_DDM
Dip Site	Palmer	Gate is open (1234). Pond 14ft deep @ NE corner.	40° 08.99338331' N	106° 12.66562620' W
Dip Site	Musgrave Reservoir: 2HR CALL	2-HR CALL AHEAD (Scholl). 8ft deep.	40° 06.72538302' N	106° 12.64262592' W
Dip Site	Fitch	6-8ft deep.	40° 06.08238306' N	106° 10.76562541' W
Dip Site	Hill	12ft deep.	40° 04.55338235' N	106° 17.80262684' W
Helispot	H-1	FOB Helispot	40° 04.06738231' N	106° 17.52762675' W
Helispot	H-37	Primary	40° 08.74838321' N	106° 13.50762636' W
Helispot	H-35	Secondary	40° 08.36338318' N	106° 13.32562629' W
Helispot	H-45	9,000' elevation, Type II approved	40° 09.173' N	106° 14.468' W
Helispot	H-40	9,000' elevation, Type II approved	40° 08.850' N	106° 14.361' W



Air Ops
Black Mountain Fire
WY-MRF-000514
9/8/21 Day
 418 acres as of 9/6 @ 1511
 61% containment

- Dip Site
- Helispot
- X Division Break
- △ Peaks
- Powerlines
- - - Completed Dozer Line
- - - Completed Hand Line
- Completed Road as Line
- Fire Edge
- Contained Line
- Access Routes
- Wildfire Daily Fire Perimeter
- FS Administrative Forest
- Fire Perimeters 2019-2021



N

0 0.33 0.65 1.3
Miles