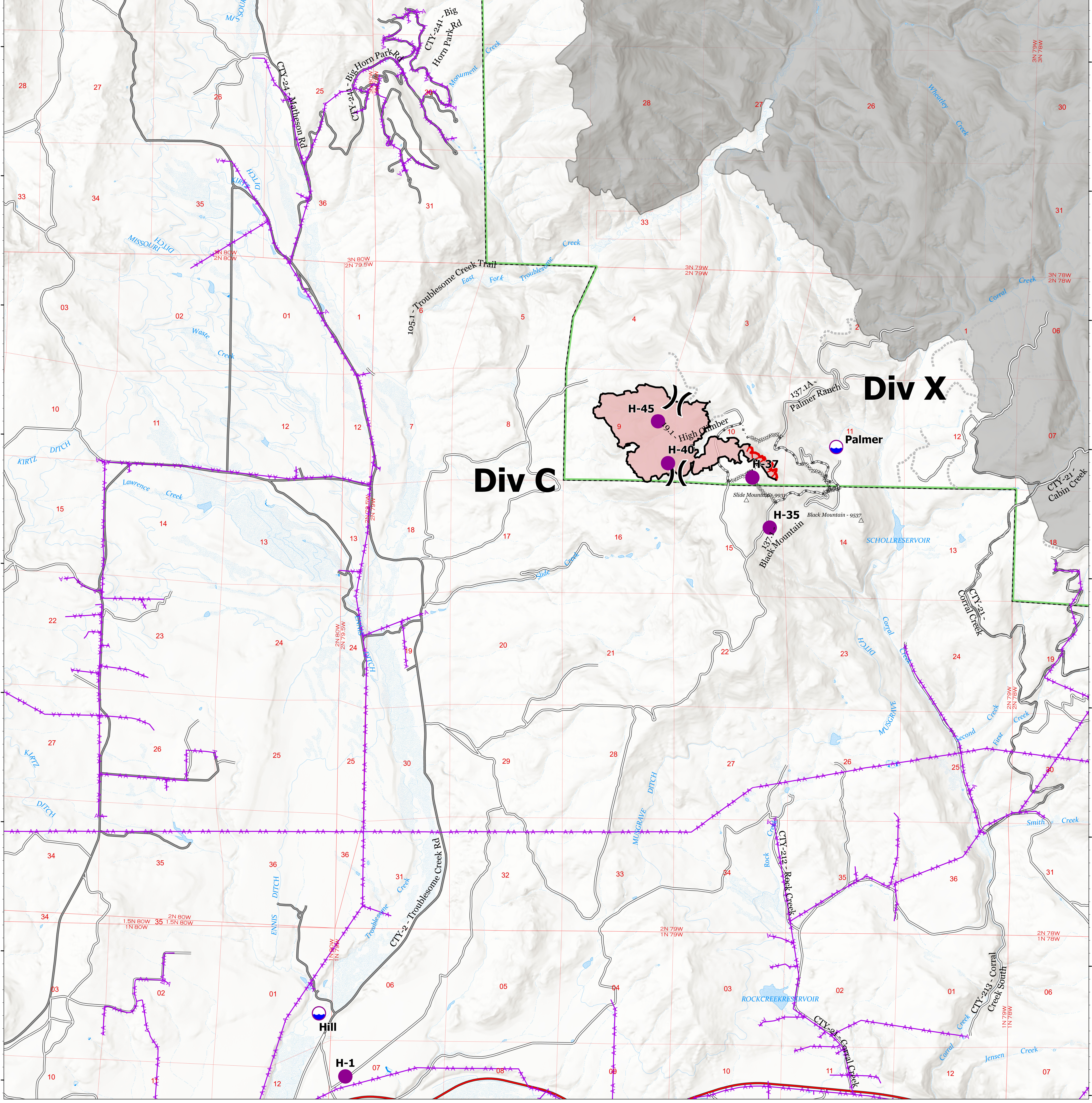


Point Type	Label	Comments	LatWGS84_DDM	LongWGS84_DDM
Dip Site	Palmer	Gate is open (1234). Pond 14ft deep @ NE corner.	40° 08.99338331' N	106° 12.66562620' W
Dip Site	Hill	12ft deep.	40° 04.55338235' N	106° 17.80262684' W
Helispot	H-1	FOB Helispot	40° 04.06738231' N	106° 17.52762675' W
Helispot	H-37	Primary	40° 08.74838321' N	106° 13.50762636' W
Helispot	H-35	Secondary	40° 08.36338318' N	106° 13.32562629' W
Helispot	H-45	9,000' elevation, Type II approved	40° 09.173' N	106° 14.468' W
Helispot	H-40	9,000' elevation, Type II approved	40° 08.850' N	106° 14.361' W



**Air Ops**  
**Black Mountain Fire**  
**WY-MRF-000514**  
**As of 9/14/21**  
 418 acres as of 9/6 @ 1511  
 91% containment

- Dip Site
- Helispot
- X Division Break
- △ Peaks
- Powerlines
- - - Completed Dozer Line
- - - Completed Hand Line
- Completed Road as Line
- Fire Edge
- Contained Line
- Access Routes
- Wildfire Daily Fire Perimeter
- FS Administrative Forest
- Fire Perimeters 2019-2021



N

0 0.33 0.65 1.3  
Miles