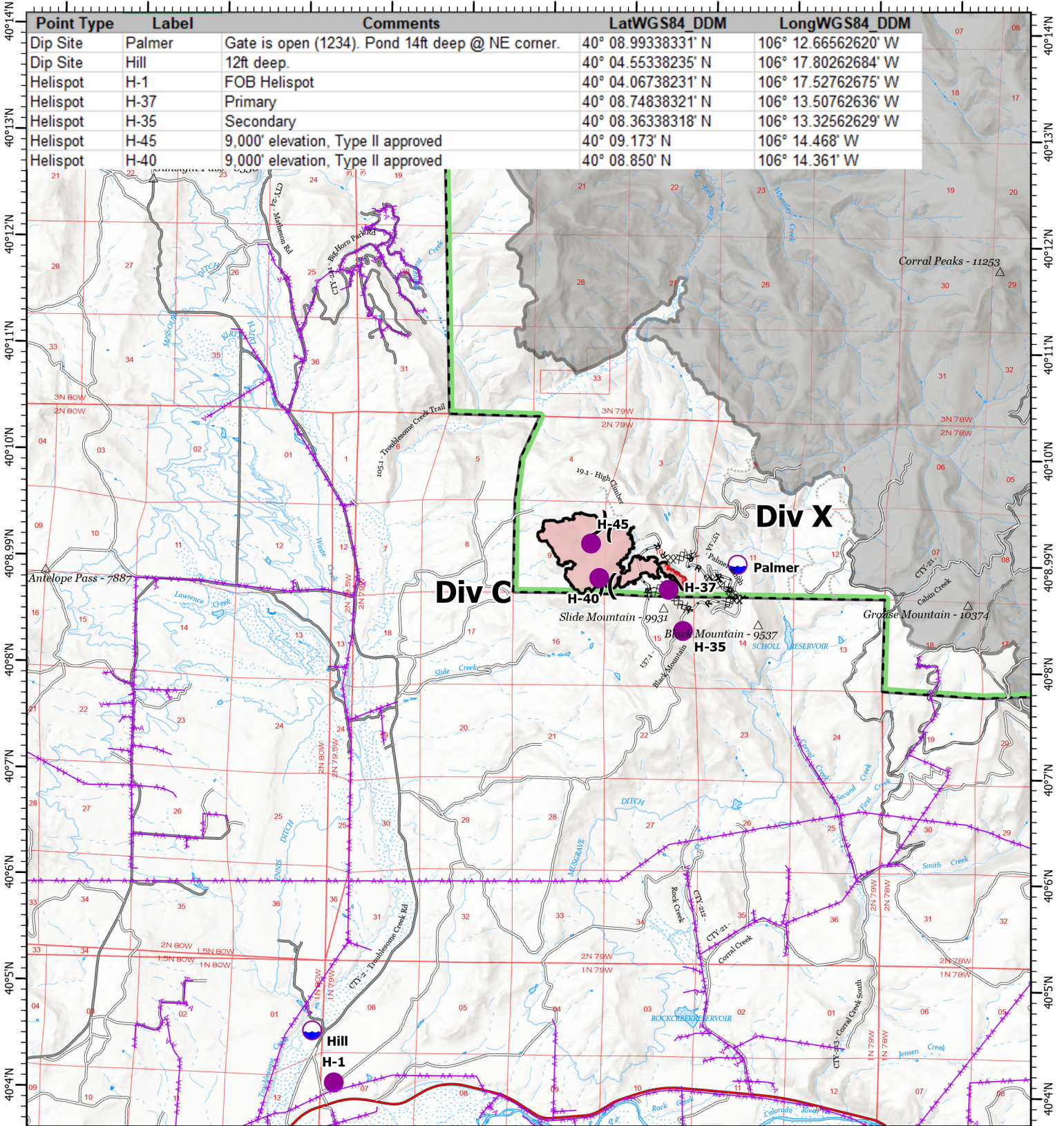


106°21.01'W 106°20'W 106°19'W 106°18'W 106°17'W 106°16'W 106°15'W 106°14'W 106°13'W 106°12'W 106°11'W 106°10'W



Point Type	Label	Comments	LatWGS84 DDM	LongWGS84 DDM
Dip Site	Palmer	Gate is open (1234). Pond 14ft deep @ NE corner.	40° 08.9938331' N	106° 12.66562620' W
Dip Site	Hill	12ft deep.	40° 04.55338235' N	106° 17.80262684' W
Helispot	H-1	FOB Helispot	40° 04.06738231' N	106° 17.52762675' W
Helispot	H-37	Primary	40° 08.74838321' N	106° 13.50762636' W
Helispot	H-35	Secondary	40° 08.36338318' N	106° 13.32562629' W
Helispot	H-45	9,000' elevation, Type II approved	40° 09.173' N	106° 14.468' W
Helispot	H-40	9,000' elevation, Type II approved	40° 08.850' N	106° 14.361' W

**Pilot Map**  
 Black Mountain Fire  
 WY-MRF-000514  
 As of 9/14/21  
 418 acres as of 9/6 @ 1511

CF - GISS  
 9/13/2021 1856  
 Acres from MMA

North American 1983 Datum, Lat/Long Grid

- Dip Site
- Helispot
- Division Break
- Peaks
- Powerlines
- Completed Dozer Line
- Completed Hand Line
- R - R Completed Road as Line
- Fire Edge
- Contained Line
- Access Routes
- Wildfire Daily Fire Perimeter
- FS Administrative Forest
- Fire Perimeters 2019-2021

