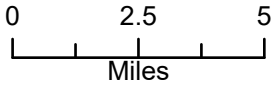


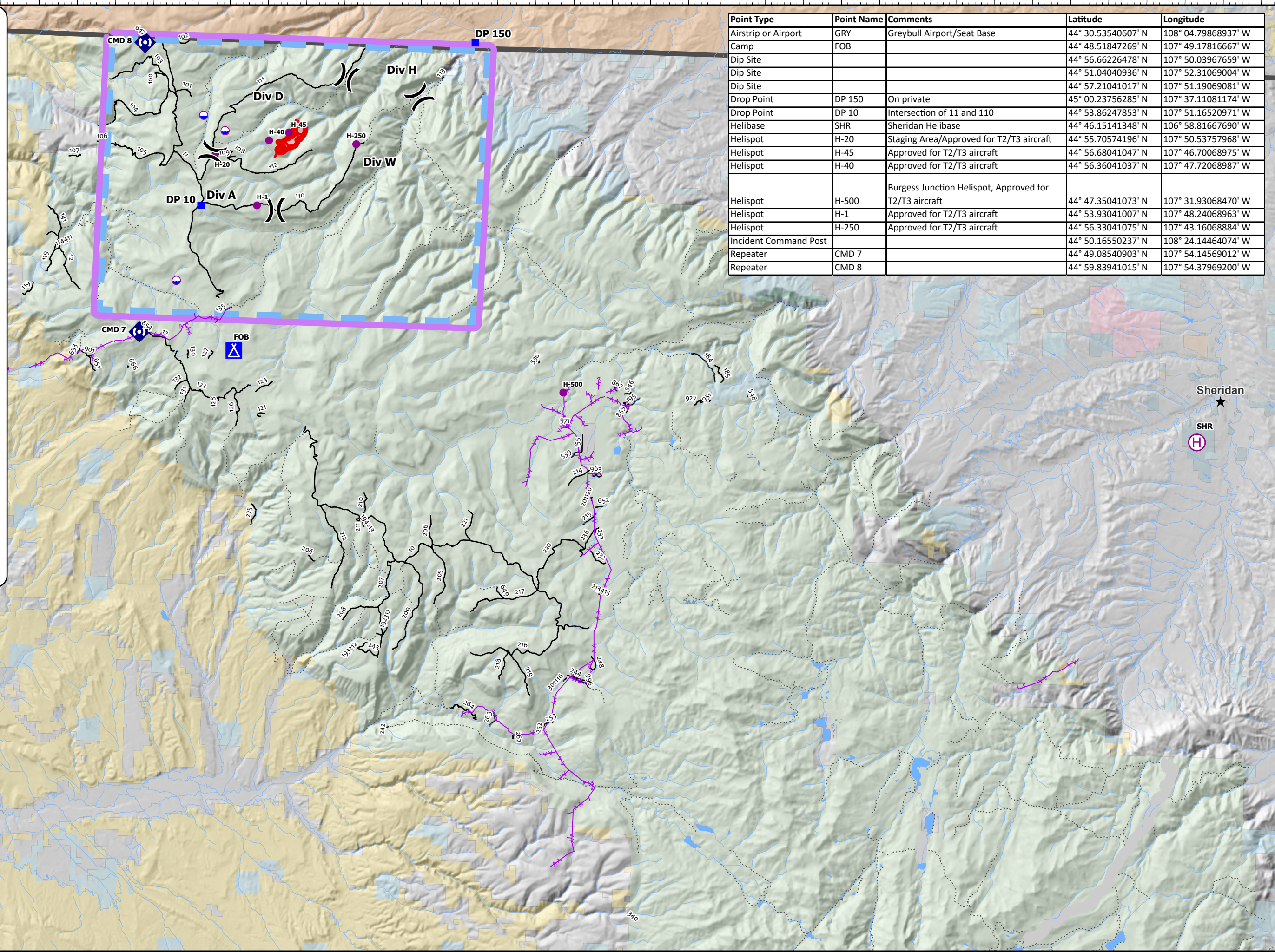
**Pilot**  
Crater Ridge  
WY-BHF-000280

7/22/2021

383 Ac. at  
7/19/2021 @ 1519  
from MMA



- Airstrip or Airport
- Dip Site
- Helispot
- Helibase
- Drop Point
- Camp
- Repeater
- Temporary Flight Restriction
- Fire Edge
- Power Lines
- Trails
- Roads open to all Vehicles, Yearlong
- Roads open to all Vehicles, Seasonal
- Special Designation, Seasonal
- Wildfire Daily Fire Perimeter
- Department Of Defense (DOD)
- Bureau of Land Management (BLM)
- National Park Service (NPS)
- US Forest Service (USFS)
- US Fish and Wildlife (USFW)
- Bureau of Reclamation (BOR)
- Bureau of Indian Affairs (BIA)
- Other Federal
- State
- Local
- Private or Unknown



Point Type	Point Name	Comments	Latitude	Longitude
Airstrip or Airport	GRY	Greybull Airport/Seat Base	44° 30.53540607' N	108° 04.79868937' W
Camp	FOB		44° 48.51847269' N	107° 49.17816667' W
Dip Site			44° 56.66226478' N	107° 50.03967659' W
Dip Site			44° 51.04040936' N	107° 52.31069004' W
Dip Site			44° 57.21041017' N	107° 51.19069081' W
Drop Point	DP 150	On private	45° 00.23756285' N	107° 37.11081174' W
Drop Point	DP 10	Intersection of 11 and 110	44° 53.86247853' N	107° 51.16520971' W
Helibase	SHR	Sheridan Helibase	44° 46.15141348' N	106° 58.81667690' W
Helispot	H-20	Staging Area/Approved for T2/T3 aircraft	44° 55.70574196' N	107° 50.53757968' W
Helispot	H-45	Approved for T2/T3 aircraft	44° 56.68041047' N	107° 46.70068975' W
Helispot	H-40	Approved for T2/T3 aircraft	44° 56.36041037' N	107° 47.72068987' W
Helispot	H-500	Burgess Junction Helispot, Approved for T2/T3 aircraft	44° 47.35041073' N	107° 31.93068470' W
Helispot	H-1	Approved for T2/T3 aircraft	44° 53.93041007' N	107° 48.24068963' W
Helispot	H-250	Approved for T2/T3 aircraft	44° 56.33041075' N	107° 43.16068884' W
Incident Command Post			44° 50.16550237' N	108° 24.14464074' W
Repeater	CMD 7		44° 49.08540903' N	107° 54.14569012' W
Repeater	CMD 8		44° 59.83941015' N	107° 54.37969200' W