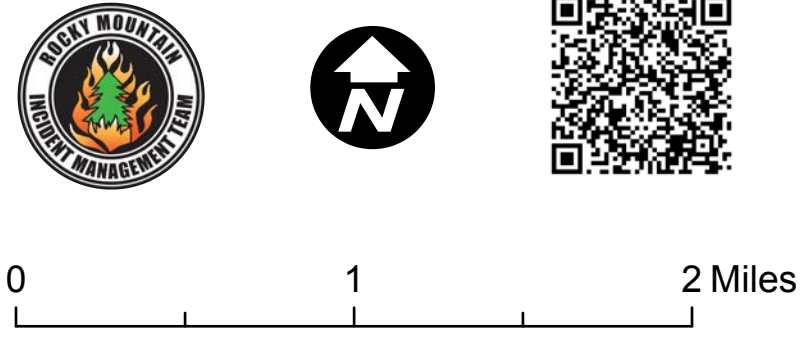
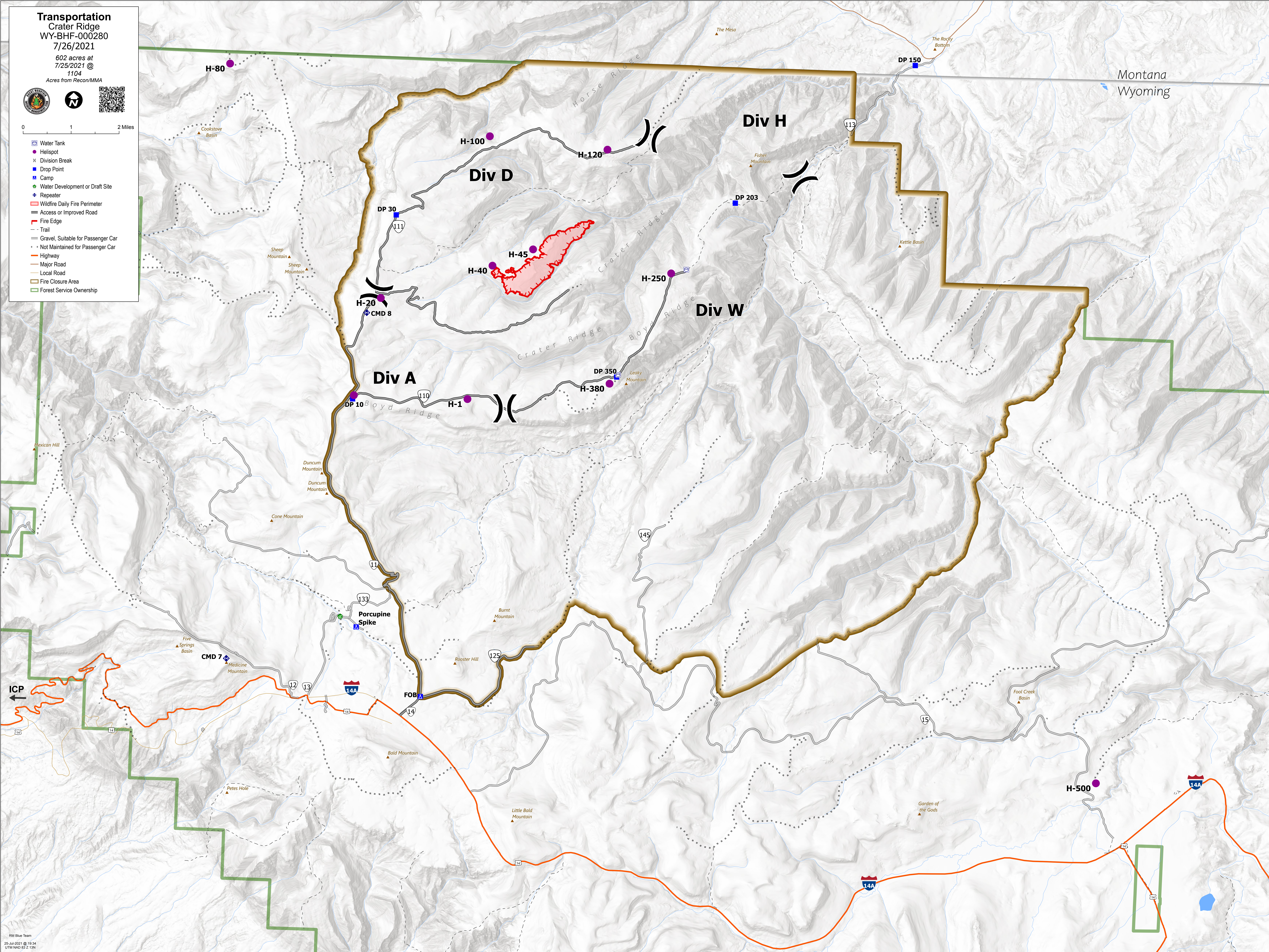


**Transportation**  
Crater Ridge  
WY-BHF-000280  
7/26/2021  
602 acres at  
7/25/2021 @  
1104  
Acres from Recon/MMA



- Water Tank
- Helispot
- Division Break
- Drop Point
- Camp
- Water Development or Draft Site
- Repeater
- Wildfire Daily Fire Perimeter
- Access or Improved Road
- Fire Edge
- Trail
- Gravel, Suitable for Passenger Car
- Not Maintained for Passenger Car
- Highway
- Major Road
- Local Road
- Fire Closure Area
- Forest Service Ownership



Montana  
Wyoming