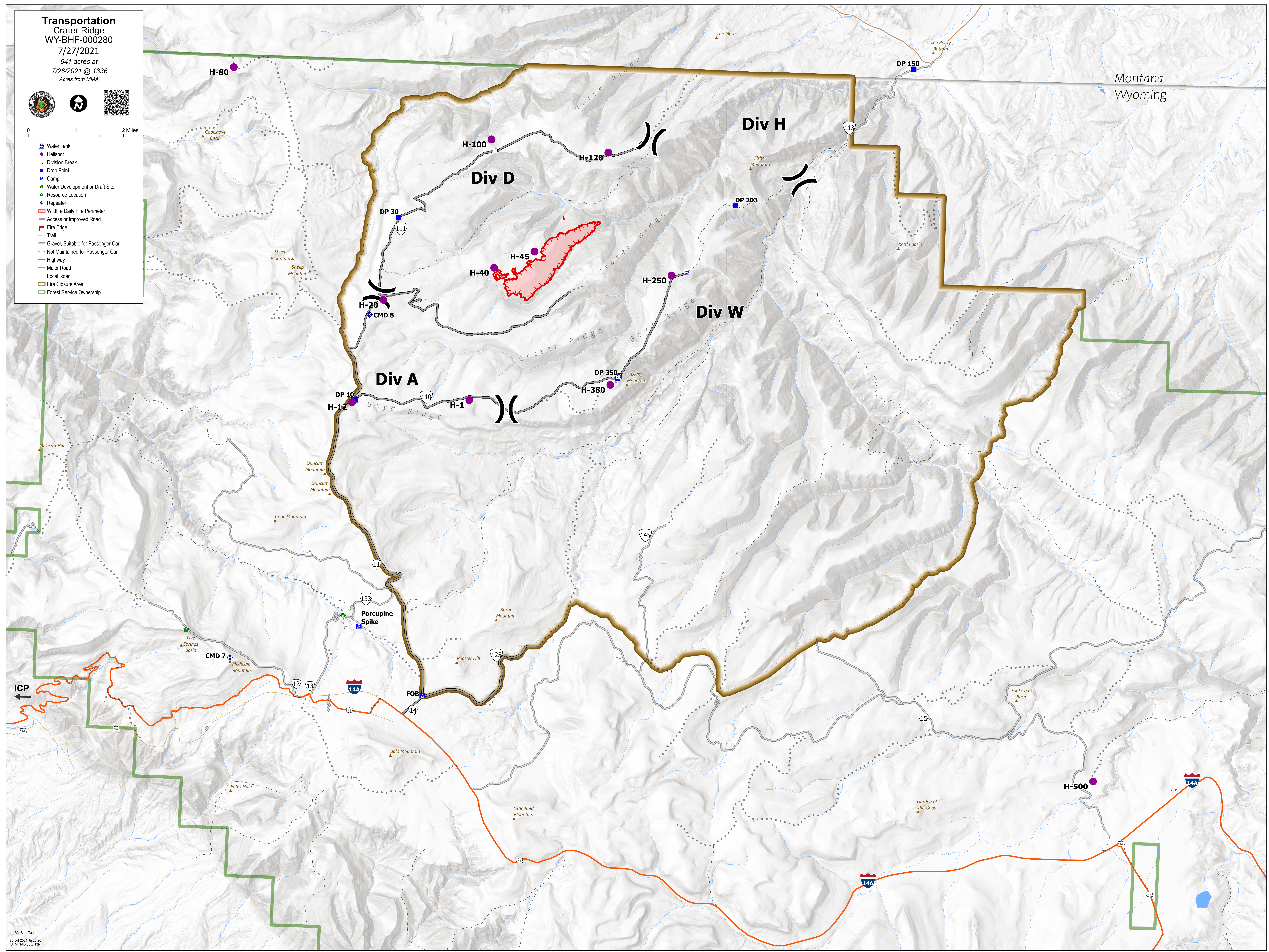


Transportation
Crater Ridge
WY-BHF-000280
7/27/2021
641 acres at
7/26/2021 @ 1336
Acres from MMA



0 1 2 Miles

- Water Tank
- Helispot
- Division Break
- Drop Point
- Camp
- Water Development or Draft Site
- Resource Location
- Repeater
- Wildfire Daily Fire Perimeter
- Access or Improved Road
- Fire Edge
- Trail
- Gravel, Suitable for Passenger Car
- Not Maintained for Passenger Car
- Highway
- Major Road
- Local Road
- Fire Closure Area
- Forest Service Ownership



Montana
Wyoming